

PUREBRED POLLED RED BULL

A SLC FREEDOM 178F ET

Calved: February 26, 1996 ★ Tattoo: 178F

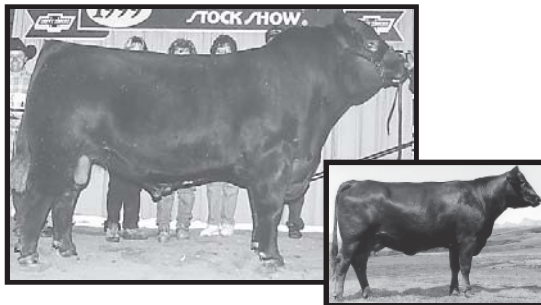
Birth Weight: 88 Adj. 205-day Wt: 599 Adj. 365-day Wt: 1196

GLT Sensation's Day 21Y	LAR Mr Sensation 506S
VAA LEACHMAN NEW DAY 205B	IHF Miss Ing-Ho 29S
VAA 023Z	ATM Tejas Rolls Roych 86B
	VAA 790W
BB Mr Forkas 1S (JSE M2)	Bold Forkus 9807297
BB MISS 6Y	Hope Valley Klara
BB Bell Orchid	CRO Willox Belgrade 11 Miner
	BB Gold Star 107R

—INDIVIDUAL EPDs—

CE: 113 BW: -2.8 WW: 39 YW: 71 Milk: 16 TMAT: 36 Gest: -3.5 CED: 109

Homozygous polled deep dark red. Another out cross purchased to use on our close net bloodlines. 1999 National Champion Gelbvieh bull in Denver. True calving ease, will really shorten gestation length. Dam has sold over \$150,000 worth of progeny to date. Extremely wide and structurely correct. Unlimited genetic potential.



SLC FREEDOM and Dam

PUREBRED POLLED BLACK BULL

B SS TRAVELER 6807 T510

12502030 ★ Calved: April 16, 1995 ★ Tattoo: T510

Birth Weight: 73 Adj. 205-day Wt: 626 Adj. 365-day Wt: 1263

DHD TRAVELER 6807	QAS Traveler 23-4
	Bemindful Maid DHD 0807
	Hoff Hi Spade SC 491
SS MISS HI SPADE A1114	SS Miss Rito OH3 5H9

—INDIVIDUAL EPDs—

BW: -1.2 WW: 36 YW: 80 Milk: 9

T510 has become one of the heaviest used bulls in the breed due to his outstanding ultrasound marbling EPD, which ranks him in the top 1% of the breed, his easy fleshing daughters with extra volume and his thick, powerful sons. T510 is a consistent calving ease sire ranking in the top of the breed for birth weight EPD. Daughters have great udders with ideal teat size.



SS TRAVELER

PUREBRED POLLED BLACK BULL

C TC FREEDOM 104

13977765 ★ Calved: January 18, 2001 ★ Tattoo:

Birth Weight: 58 Adj. 205-day Wt: 723 Adj. 365-day Wt: 1406

CONNEALY FOREFRONT	Connealy Frontline
	Eileen Heartland Conanga 6443
	TC Stockman 365
T C RUBY 9095	TC Ruby 4068

—INDIVIDUAL EPDs—

BW: 2.6 WW: 50 YW: 93 Milk: 26

Top selling bull of 2002 TC Ranch Production Sale. Strong maternal bloodlines combining Stockman 365 and Leachman Right Time on dam's side. Passes on his super hip and front along with balance, stoutness and eye appeal. Tremendous spread from a low birth weight of 58 pounds to an impressive yearling weight of 1406.

PUREBRED POLLED BLACK BULL

D GMCC RUPPLE GUNNISON N31

AMGV854851 ★ Calved: January 12, 2003 ★ Tattoo: GMCCN31

Birth Weight: 86 Adj. 205-day Wt: 849 Adj. 365-day Wt: 1178

VRT RUP LAZY TV HOTFUDGEJ357	WAC Fullback 011G
	VRT F091
	GKT Bud 11G
RUP RUPPLE 919L	RUP Ruppel J Precision 715J

—INDIVIDUAL EPDs—

CE: 103 BW: 2.2 WW: 48 YW: 83 Milk: 17 TMAT: 41 Gest: -.5 CED: 105

Homozygous black and homozygous polled herd sire we purchased from Corry Ruppel, to use as an outcross in our herd, and for cattlemen who have been using our bulls for several years. Gunnison is doing a great job of breeding desirable traits as you will see his calves come easy and are excellent in giving fleshing ability, muscle, and depth of rib. You will appreciate his calves sale day.

PUREBRED POLLED BLACK BULL

E TAU KRUGERRAND 70M

14710376 ★ Calved: February 14, 2002 ★ Tattoo: 70M

	C H Stacker 7040
KRUGERRAND OF DONAMERE 490	Donamere Bachel Beauty 288
	D H D Traveler 6807
T G A PROMPTER 6807 557E	HF Administrator Prompter912

—INDIVIDUAL EPDs—

BW: 2 WW: 39 YW: 93 Milk: 18

70M's calves are deep sided, with heavy muscle, and are very sound calves. Krugerrand 70M comes from a great 6807 female with a near perfect udder. One of his first calves sold for \$5700 at last year's Nebraska Cattlemen's Classic.

PUREBRED POLLED BLACK BULL

F OGS G MASTER ONIX 247M

AMGV801649 ★ Calved: February 14, 2002 ★ Tattoo: 247M

Birth Weight: 92 Adj. 205-day Wt: 626 Adj. 365-day Wt: 1196

	FHG Flying H Extra 150D
RAG MR EXTRA WONDERFUL ET	RAG Miss Wonderful
	CTRG Master Card 558E ET
DGD SYLVIA 747G	DGD Miss Blk Blush

—INDIVIDUAL EPDs—

CE: 110 BW: -1.3 WW: 35 YW: 64 Milk: 18 TMAT: 36 Gest: -1.0 CED: 107

We purchased Master Onix from the Overmiller Ranch in Kansas as a Homozygous Black, Homozygous Polled outcross sire. The Onix calves are larger framed and heavy muscled cattle.



TC FREEDOM 104

PUREBRED POLLED BLACK BULL

Lot 1 | **TAU MR FREEDOM 16R**

★ Calved: January 28, 2005 ★ Tattoo: TAU 16R ★ Reg. #: AMGV933345

Birth Weight: 78 Adj. 205-day Wt: 810

VAA Leachman New Day 205B

SLC FREEDOM 178F ET
BB Miss 61Y

BTI Big Sky 2066K ET

TAU MISS BIG SKY 3132N
TAU Ms Sleepy 035K of 825H

CE	BW	WW	YW	Milk	TM	GL	CED	SC
103	.7	45	82	14	37	-4.1	105	.4

16R—Black and double polled son of SLC Freedom that is one of the best black sons of Freedom ever raised here at Taubenheim Gelbvieh. He is heavy muscled, thick made and comes from a very good first calf heifer. 16R weaned at 810 lbs with only a 78 lb start. Now that is going to town.



Lot 1

7/8 POLLED BLACK BULL

Lot 2 | **TAU MR FREEDOM 21R**

★ Calved: January 29, 2005 ★ Tattoo: TAU 21R ★ Reg. #: AMGV933132

Birth Weight: 80 Adj. 205-day Wt: 754

VAA Leachman New Day 205B

SLC FREEDOM 178F ET
BB Miss 61Y

TJB Sleepy 161F ET

TAU MS SLEEPY 983J
TAU Ms Blacksmith 639F

CE	BW	WW	YW	Milk	TM	GL	CED	SC
102	.6	41	77	15	36	-3.9	103	.2

21R—Black and double polled son of SLC Freedom that is square hipped and thick made like so many of the Freedoms are. 21R had a 754 lb WW out of a first calf heifer.

7/8 POLLED BLACK BULL

Lot 3 | **TAU MR FREEDOM 23R**

★ Calved: January 29, 2005 ★ Tattoo: TAU 23R ★ Reg. #: AMGV933144

Birth Weight: 85 Adj. 205-day Wt: 728

VAA Leachman New Day 205B

SLC FREEDOM 178F ET
BB Miss 61Y

SEPT Rodeo Drive J14

TAU MISS RODEO 3152N
TAU Ms Traveler 6807 512E

CE	BW	WW	YW	Milk	TM	GL	CED	SC
103	1.2	38	75	13	32	-3.1	104	.2

23R—Black and double polled son of Freedom out of a very good Rodeo Drive female. His maternal grandma 512F is also one of my favorite cows. You can find many good cows in his pedigree.

7/8 POLLED BLACK BULL

Lot 4 | **TAU FREEDOM 27R**

★ Calved: January 31, 2005 ★ Tattoo: TAU 27R ★ Reg. #: AMGV933140

Birth Weight: 83 Adj. 205-day Wt: 760

VAA Leachman New Day 205B

SLC FREEDOM 178F ET
BB Miss 61Y

PTE Z937

TAU MISS PTE Z937 326N
TAU Ms Conveyor 703G

CE	BW	WW	YW	Milk	TM	GL	CED	SC
102	.9	43	81	16	38	-4.1	103	.3

27R—Black and double polled son of SLC Freedom with a low BW and tremendous performance out of a really stout first calf heifer.

PUREBRED POLLED BLACK BULL

Lot 5 | **TAU MR GUNNISON 28R**

★ Calved: February 1, 2005 ★ Tattoo: TAU 28R ★ Reg. #: AMGV933144

Birth Weight: 87 Adj. 205-day Wt: 634

VRT Rup Lazy TV Hotfudge J357

GMCC RUPPLE GUNNISON N31
RUP Ruppel 919L

BTI Big Sky 2066K ET

TAU MISS BIG SKY 2206M
TAU Ms Bud 937J

CE	BW	WW	YW	Milk	TM	GL	CED	SC
104	2.1	40	76	15	35	-1.1	105	.3

28R—Black and double polled son of Gunnison that is moderate framed and really deep sided like so many of the Gunnison calves are.

PUREBRED POLLED RED BULL

Lot 6 | **TAU MR BERETTA 32R OF 9142 ET**

★ Calved: February 1, 2005 ★ Tattoo: TAU 32R ★ Reg. #: AMGV948350

Birth Weight: 90 Adj. 205-day Wt: 573

JEB Polled Gizmo 17Z

SPUR BERETTA 703G
SPUR Vanessa 19E ET

SLC Freedom 178F ET

TAU MS FREEDOM 9142J
TAU Ms Pb 575E

CE	BW	WW	YW	Milk	TM	GL	CED	SC
102	2.8	43	77	20	42	-3.9	103	.2

32R—Double polled red non-dilluter ET. He is a brother to 54R.

3/4 POLLED RED BULL

Lot 7 | **TAU MR FREEDOM 37R**

★ Calved: February 3, 2005 ★ Tattoo: TAU 37R ★ Reg. #: AMGV933154

Birth Weight: 85 Adj. 205-day Wt: 771

VAA Leachman New Day 205B

SLC FREEDOM 178F ET
BB Miss 61Y

Glacier Red Rock

TAU MISS RED ROCK 379N
TAU Ms Pepper Shaker 603F

CE	BW	WW	YW	Milk	TM	GL	CED	SC
106	1.1	39	72	13	33	-2.9	105	.3

37R—Double polled red non-dilluter son of Freedom out of a very good Rodeo Drive first calf heifer.

PUREBRED GELBVIEH

PUREBRED POLLED RED BULL

Lot 8 | **TAU MR FREEDOM 36R**

★ Calved: February 2, 2005 ★ Tattoo: TAU 36R ★ Reg. #: AMGV933151
Birth Weight: 90 Adj. 205-day Wt: 775
 VAA Leachman New Day 205B
 SLC FREEDOM 178F ET
 BB Miss 61Y
 GKT Boo Boo 155E
 TAU MS BOO BOO 933J
 TAU Ms Blacksmith 758G

CE	BW	WW	YW	Milk	TM	GL	CED	SC
105	1.7	45	83	18	41	-4.1	106	.4

36R—Double polled red non-dilluter son of SLC Freedom that is good, may be the thickest bull in the offering. He has a big top and is deep in his stifle. 36R comes from a super Boo Boo daughter that is a very good milker. 36R will be shown on the hill in Denver. If you need a really thick heavy muscled red bull, find 36R.

PUREBRED POLLED BLACK BULL

Lot 9 | **TAU MR GUNNISON 43R**

★ Calved: February 3, 2005 ★ Tattoo: TAU 43R ★ Reg. #: AMGV933163
Birth Weight: 53 Adj. 205-day Wt: 695
 VRT Rup Lazy TV Hotfudge J357
 GMCC RUPPLE GUNNISON N31
 RUP Ruppel 919L
 SLC Freedom 178F ET
 TAU MS FREEDOM 208M
 TAU Ms Empire 069K

CE	BW	WW	YW	Milk	TM	GL	CED	SC
104	1.6	44	81	16	38	-1.9	104	.8

43R—Black and double polled twin son of Gunnison that grew up well despite only having a 53 lb start up weight. 208M's first calf weaned with a weaning ratio of 106.

PUREBRED POLLED BLACK BULL

Lot 10 | **TAU BERETTA 46R OF 9142 ET**

★ Calved: February 4, 2005 ★ Tattoo: TAU 46R ★ Reg. #: AMGV948351
Birth Weight: 86 Adj. 205-day Wt: 662
 JEB Polled Gizmo 17Z
 SPUR BERETTA 703G
 SPUR Vanessa 19E ET
 SLC Freedom 178F ET
 TAU MS FREEDOM 9142J
 TAU Ms Pb 575E

CE	BW	WW	YW	Milk	TM	GL	CED
102	2.8	43	77	20	42	-3.9	103

46R—Black and double polled ET son of Beretta out of Ms Freedom 9142 who is one of the really great Freedom females in our herd. She is heavy muscled, easy fleshing, structurally sound and has a great udder. A great cow backs these ET calves.

PUREBRED POLLED RED BULL

Lot 11 | **TAU MR BERETTA 52R OF 9142 ET**

★ Calved: February 5, 2005 ★ Tattoo: TAU 52R ★ Reg. #: AMGV933176
Birth Weight: 94 Adj. 205-day Wt: 830
 JEB Polled Gizmo 17Z
 SPUR BERETTA 703G
 SPUR Vanessa 19E ET
 SLC Freedom 178F ET
 TAU MS FREEDOM 9142J
 TAU Ms Pb 575E

CE	BW	WW	YW	Milk	TM	GL	CED	SC
102	2.8	43	77	20	42	-3.9	103	.3

52R—Double polled red non-dilluter ET son of Beretta with tremendous performance. Having weaned off at 830 lbs.—now that's going to town.



Lot 8

PUREBRED POLLED RED BULL

Lot 12 | **TAU MR BERETTA 54R OF 9142 ET**

★ Calved: February 5, 2005 ★ Tattoo: TAU 54R ★ Reg. #: AMGV948352
Birth Weight: 88 Adj. 205-day Wt: 643
 JEB Polled Gizmo 17Z
 SPUR BERETTA 703G
 SPUR Vanessa 19E ET
 SLC Freedom 178F ET
 TAU MS FREEDOM 9142J
 TAU Ms Pb 575E

CE	BW	WW	YW	Milk	TM	GL	CED	SC
102	2.8	43	77	20	42	-3.9	103	.2

54R—Double polled red non-dilluter son of Beretta from the really good Freedom cow 9142. 54R is much like his brothers in that they are all large framed with loads of growth. Full brother to Lots 12, 30, 29, 6, 11 and 10.

7/8 POLLED BLACK BULL

Lot 13 | **TAU MR FREEDOM 59R**

★ Calved: February 6, 2005 ★ Tattoo: TAU 59R ★ Reg. #: AMGV933183
Birth Weight: 87 Adj. 205-day Wt: 733
 VAA Leachman New Day 205B
 SLC FREEDOM 178F ET
 BB Miss 61Y
 TAU Dr Pepper 29D
 TAU MS DR PEPPER 092K
 TAU Ms Ext 505E

CE	BW	WW	YW	Milk	TM	GL	CED	SC
105	1.0	41	78	13	34	-3.0	105	.3

59R—Black and polled son of Freedom that did very well considering his mom lived most of the summer with hardware.

7/8 POLLED HOMOZYGOUS BLACK BULL

Lot 14 | **TAU MR ONIX 64R**

★ Calved: February 7, 2005 ★ Tattoo: TAU 64R ★ Reg. #: AMGV933190
Birth Weight: 88 Adj. 205-day Wt: 672
 RAG Mr Extra Wonderful ET
 OGS MASTER ONIX 247M
 DGD Sylvia 747G
 GNG Blacksmith 19B
 TAU MS BLACKSMITH 8105H
 TAU Kaiser 007C

CE	BW	WW	YW	Milk	TM	GL	CED	SC
109	-.1	28	53	18	32	-.9	107	.2

64R—Homozygous black and double polled thick made heavy muscled son of Onix that comes in a larger frame from a very good moderate framed Blacksmith female who has an excellent udder.

PUREBRED POLLED BLACK BULL

Lot 15 **TAU MR GUNNISON 68R**

★ Calved: February 7, 2005 ★ Tattoo: TAU 68R ★ Reg. #: AMGV933194

Birth Weight: 93 Adj. 205-day Wt: 749

VRT Rup Lazy TV Hotfudge J357

GMCC RUPPLE GUNNISON N31

RUP Ruppel 919L

JCT TAU Toby 84Y

TAU A494D

MAC Miss Valhalla N114

CE	BW	WW	YW	Milk	TM	GL	CED	SC
100	2.8	47	78	17	41	-.4	99	.4

68R—Double black RC and polled son of Gunnison with excellent depth and fleshing ability, with a 108 weaning ratio. Dam nursing ratio of 104 on 7 calves.

PUREBRED POLLED HOMOZYGOUS BLACK BULL

Lot 16 **TAU GUNNISON N31 72R**

★ Calved: February 8, 2005 ★ Tattoo: TAU 72R ★ Reg. #: AMGV941368

Birth Weight: 50 Adj. 205-day Wt: 708

VRT Rup Lazy TV Hotfudge J357

GMCC RUPPLE GUNNISON N31

RUP Ruppel 919L

CTRG Dateline 405D ET

TAU MISS DATELINE 2122M

TAU Ms Dr Pepper 629F

CE	BW	WW	YW	Milk	TM	GL	CED	SC
102	2.6	46	81	19	42	-.5	105	.8

72R—Homozygous black and double polled twin son of Rup Gunnison that is moderate framed, deep sided and easy fleshing. 72R should produce some excellent females.

PUREBRED POLLED HOMOZYGOUS BLACK BULL

Lot 17 **TAU GUNNISON 71R**

★ Calved: February 8, 2005 ★ Tattoo: TAU 71R ★ Reg. #: AMGV941367

Birth Weight: 80 Adj. 205-day Wt: 706

VRT Rup Lazy TV Hotfudge J357

GMCC RUPPLE GUNNISON N31

RUP Ruppel 919L

SLC Freedom 178F ET

TAU MISS FREEDOM 210M

TAU Ms Sleepy 064K 705G

CE	BW	WW	YW	Milk	TM	GL	CED	SC
104	.2	41	76	15	36	-2.2	105	.3

71R—Homozygous black and double polled son of Gunnison out of a nice Freedom female that should calve easily with calves that grow fast.

PUREBRED POLLED RED BULL

Lot 18 **TAU MR FREEDOM 80R**

★ Calved: February 9, 2005 ★ Tattoo: TAU 80R ★ Reg. #: AMGV941407

Birth Weight: 80 Adj. 205-day Wt: 696

VAA Leachman New Day 205B

SLC FREEDOM 178F ET

BB Miss 61Y

TAU Dr Pepper 29D

TAU MS DR PEPPER 024K OF 874H

TAU Ms Blackjack 049F 874H

CE	BW	WW	YW	Milk	TM	GL	CED	SC
106	.8	43	82	15	37	-2.9	106	.3

80R—Double polled red non-dilluter son of Freedom who should calve easily and produce some excellent females.

PUREBRED POLLED BLACK BULL

Lot 19 **TAU MR BERETTA 81R OF 9142 ET**

★ Calved: February 9, 2005 ★ Tattoo: TAU 81R ★ Reg. #: AMGV933198

Birth Weight: 98 Adj. 205-day Wt: 779

JEB Polled Gizmo 17Z

SPUR BERETTA 703G

SPUR Vanessa 19E ET

SLC Freedom 178F ET

TAU MS FREEDOM 9142J

TAU Ms Pb 575E

CE	BW	WW	YW	Milk	TM	GL	CED	SC
102	2.8	43	77	20	42	-3.9	103	.3

81R—Black and double polled ET son of Beretta. 81R is the thickest highest performing ET calf from the 9142 Flush. Full brother to Lots 6, 11, 12, 10, 29 and 30.



Lot 19

7/8 POLLED BLACK BULL

Lot 20 **TAU MR BERETTA 83R**

★ Calved: February 10, 2005 ★ Tattoo: TAU 83R ★ Reg. #: AMGV933216

Birth Weight: 88 Adj. 205-day Wt: 677

JEB Polled Gizmo 17Z

SPUR BERETTA 703G

SPUR Vanessa 19E ET

BEA Black Cat

TAU MISS DEE 404D

TAU Kaiser 707B

CE	BW	WW	YW	Milk	TM	GL	CED	SC
101	2.6	34	65	20	37	-3.0	101	.3

83R—Double black RC and double polled son of Beretta. 83R is one of the really heavy muscled Beretta calves in the offering coming from a very good 11 year old cow.

PUREBRED POLLED BLACK BULL

Lot 21 **TAU MR GUNNISON 89R**

★ Calved: February 11, 2005 ★ Tattoo: TAU 89R ★ Reg. #: AMGV933223

Birth Weight: 80 Adj. 205-day Wt: 720

VRT Rup Lazy TV Hotfudge J357

GMCC RUPPLE GUNNISON N31

RUP Ruppel 919L

SLC Freedom 178F ET

TAU MISS FREEDOM 244M

TAU Miss Blacksmith 535E

CE	BW	WW	YW	Milk	TM	GL	CED	SC
103	1.4	42	77	17	38	-1.9	104	.3

89R—Black and double polled son of Gunnison that should calve easily and still maintain excellent performance from a very good second calf heifer.

PUREBRED GELBVIEH

PUREBRED POLLED BLACK BULL

Lot 22 | **TAU MR FREEDOM 97R**

★ Calved: February 12, 2005 ★ Tattoo: TAU 97R ★ Reg. #: AMGV933236
Birth Weight: 88 Adj. 205-day Wt: 734
 VAA Leachman New Day 205B
 SLC FREEDOM 178F ET
 BB Miss 61Y
 TAU Dr Pepper 29D
 TAU PEARL'S PEPPER 897H
 DCG Pearls Black Lady A3

CE	BW	WW	YW	Milk	TM	GL	CED	SC
105	1.9	45	83	14	37	-3.5	104	.3

97R—Black and double polled son of SLC Freedom with great performance and an excellent set of EPDs.

PUREBRED POLLED HOMOZYGOUS BLACK BULL

Lot 23 | **TAU MR GUNNISON 94R**

★ Calved: February 12, 2005 ★ Tattoo: TAU 94R ★ Reg. #: AMGV933232
Birth Weight: 89 Adj. 205-day Wt: 788
 VRT Rup Lazy TV Hotfudge J357
 GMCC RUPPLE GUNNISON N31
 RUP Ruppel 919L
 TLR Cocoa 35C
 NORD HARMONY
 NORD Hanny

CE	BW	WW	YW	Milk	TM	GL	CED	SC
102	2.3	50	87	21	46	-.6	105	.4

94R—Homozygous black and double polled son of Gunnison. 94R may be the largest framed highest performing son of Gunnison with a 114 wt ratio. The dam has a nursing ratio of 107 on 6 calves.

7/8 POLLED BLACK BULL

Lot 24 | **TAU GUNNISON 104R**

★ Calved: February 14, 2005 ★ Tattoo: TAU 104R ★ Reg. #: AMGV933246
Birth Weight: 93 Adj. 205-day Wt: 610
 VRT Rup Lazy TV Hotfudge J357
 GMCC RUPPLE GUNNISON N31
 RUP Ruppel 919L
 WAC Blackjack 049F
 TAU MISS BLACKJACK 114L
 TAU Ms 36S of 351C 926J

CE	BW	WW	YW	Milk	TM	GL	CED
104	2.0	41	83	21	42	-0.3	103

104R—Black and double polled powerful made son of Gunnison that comes from a really good milking 049P female.

PUREBRED POLLED BLACK BULL

Lot 25 | **TAU ONIX 108R**

★ Calved: February 14, 2005 ★ Tattoo: TAU 108R ★ Reg. #: AMGV933253
Birth Weight: 91 Adj. 205-day Wt: 754
 RAG Mr Extra Wonderful ET
 OGS MASTER ONIX 247M
 DGD Sylvia 747G
 SLC Freedom 178F ET
 TAU MS FREEDOM 916J
 TAU Ms Pepper Shaker 30G

CE	BW	WW	YW	Milk	TM	GL	CED	SC
104	.5	37	69	15	34	-2.1	103	.2

108R—Double black RC and double polled son of Onix that is very heavy muscled with great performance and style. He comes from what is one of the very best black Freedom females in our herd. 916J is heavy muscled, deep sided and easy fleshing with a great udder; she also has a 104 nursing ratio.

PUREBRED POLLED BLACK BULL

Lot 26 | **TAU MR GUNNISON 114R**

★ Calved: February 15, 2005 ★ Tattoo: TAU 114R ★ Reg. #: AMGV933263
Birth Weight: 89 Adj. 205-day Wt: 754
 VRT Rup Lazy TV Hotfudge J357
 GMCC RUPPLE GUNNISON N31
 RUP Ruppel 919L
 GNG Blacksmith 19B
 TAU MS BLACKSMITH 825H
 TAU Ms Doctor Pepper 642F

CE	BW	WW	YW	Milk	TM	GL	CED	SC
100	3.3	45	77	17	40	-.6	103	.4

114R—Double black RC and double polled son of Gunnison who has excellent growth and comes from a very heavy muscled clean fronted, easy fleshing Blacksmith female. If having a great cow in the pedigree means anything, find 114R.

PUREBRED POLLED BLACK BULL

Lot 27 | **TAU MR ONIX 122R**

★ Calved: February 16, 2005 ★ Tattoo: TAU 122R ★ Reg. #: AMGV933273
Birth Weight: 97 Adj. 205-day Wt: 752
 RAG Mr Extra Wonderful ET
 OGS MASTER ONIX 247M
 DGD Sylvia 747G
 GKT Bud 11G
 XXB MISS BLK PLD BUD 906J
 XXB Miss Bomber 606E

CE	BW	WW	YW	Milk	TM	GL	CED
106	0.7	41	72	17	38	-1.4	103

122R—Double black RC and double polled son of Onix that comes from a very good Bud female.



Lot 24

PUREBRED POLLED HOMOZYGOUS BLACK BULL

Lot 28 | **TAU GUNNISON 124R**

★ Calved: February 17, 2005 ★ Tattoo: TAU 124R ★ Reg. #: AMGV933279
Birth Weight: 82 Adj. 205-day Wt: 725
 VRT Rup Lazy TV Hotfudge J357
 GMCC RUPPLE GUNNISON N31
 RUP Ruppel 919L
 KCF Bennetts Bonus F 95
 TAU MISS BENNETTS BONUS 2111
 TAU TAU Miss Primeline 207B

CE	BW	WW	YW	Milk	TM	GL	CED
101	0.8	39	68	14	34	-0.4	103

124R—Homozygous black and double polled heavy muscled son of Gunnison that comes to us in a moderate framed package.

PUREBRED POLLED BLACK BULL

Lot 29 **TAUBERETTA 138R OF 9142J ET**

★ Calved: February 21, 2005 ★ Tattoo: TAU 1384 ★ Reg. #: AMGV933315

Birth Weight: 87 Adj. 205-day Wt: 728

JEB Polled Gizmo 17Z
 SPUR BERETTA 703G
 SPUR Vanessa 19E ET
 SLC Freedom 178F ET
 TAU MS FREEDOM 9142J
 TAU Ms Pb 575E

CE	BW	WW	YW	Milk	TM	GL	CED	SC
102	2.8	43	77	20	42	-3.9	103	.3

138R—Black and double polled ET son of Beretta out of the 9142 cow. 138R is a moderate framed, heavy muscled, structurally correct calf that has growth and will make great females. Full brother to Lots 30, 6 and 19.

Retaining 1/3 Semen Interest



Lot 29

PUREBRED POLLED RED BULL

Lot 30 **TAU MR BERETTA 148R--9142 ET**

★ Calved: February 22, 2005 ★ Tattoo: TAU 148R ★ Reg. #: AMGV948355

Birth Weight: 84 Adj. 205-day Wt: 676

JEB Polled Gizmo 17Z
 SPUR BERETTA 703G
 SPUR Vanessa 19E ET
 SLC Freedom 178F ET
 TAU MS FREEDOM 9142J
 TAU Ms Pb 575E

CE	BW	WW	YW	Milk	TM	GL	CED
102	2.8	43	77	20	42	-3.9	103

148R—Double polled red non-dilluter son of Beretta. 148R is a full brother to Lots 6, 19 and 29.

3/4 POLLED BLACK BULL

Lot 33 **TAU ONIX 157R**

★ Calved: February 25, 2005 ★ Tattoo: TAU 157R ★ Reg. #: AMGV941210

Birth Weight: 92 Adj. 205-day Wt: 797

RAG Mr Extra Wonderful ET
 OGSG MASTER ONIX 247M
 DGD Sylvia 747G
 AN
 TAU MS CONVEYER 710G
 TAU Ms Kaiser 566E

CE	BW	WW	YW	Milk	TM	GL	CED
107	-.7	38	65	20	39	-.7	105

157R—Double black RC and double polled son of Onix with excellent individual growth. Dam has 98 bw ratio and a 106 ww ratio on 7 calves.

PUREBRED POLLED BLACK BULL

Lot 31 **TAU ONIX 154R**

★ Calved: February 25, 2005 ★ Tattoo: TAU 154R ★ Reg. #: AMGV941206

Birth Weight: 94 Adj. 205-day Wt: 662

RAG Mr Extra Wonderful ET
 OGSG MASTER ONIX 247M
 DGD Sylvia 747G
 GDX Mr Raine Man
 TAU MISS RAINMAN 106D
 TAU 818X

CE	BW	WW	YW	Milk	TM	GL	CED	SC
104	1.5	34	65	19	36	-.4	103	.2

154R—Black and polled son of Onix that has a big top and thick quarter. 154R comes from a 12 year old female with a 103 nursing ratio on 10 calves.

PUREBRED POLLED HOMOZYGOUS BLACK BULL

Lot 34 **TAU GUNNISON 160R**

★ Calved: February 26, 2005 ★ Tattoo: TAU 160R ★ Reg. #: AMGV941216

Birth Weight: 85 Adj. 205-day Wt: 681

VRT Rup Lazy TV Hotfudge J357
 GMCC RUPPLE GUNNISON N31
 RUP Ruppel 919L
 TJB Sleepy 161F ET
 TAU MISS SLEEPY 2123M
 TAU Ms Stuart 8152H

CE	BW	WW	YW	Milk	TM	GL	CED	SC
103	1.8	38	71	19	38	-1.1	105	.2

160R—Homozygous black and polled son of Gunnison that is long sided from a very good uddered easy fleshing Sleepy female.

7/8 POLLED BLACK BULL

Lot 32 **TAU ONIX 152R**

★ Calved: February 25, 2005 ★ Tattoo: TAU 152R ★ Reg. #: AMGV941204

Birth Weight: 96 Adj. 205-day Wt: 726

RAG Mr Extra Wonderful ET
 OGSG MASTER ONIX 247M
 DGD Sylvia 747G
 TAU Dr Pepper 29D
 TAU MS DR PEPPER 8156H
 TAU Miss Booker 451D

CE	BW	WW	YW	Milk	TM	GL	CED	SC
108	.5	36	67	14	32	-.3	105	.2

152R—Double black RC and double polled son of Master Onix that is a big framed, long sided, square hipped bull who will add pounds to any calf crop.

PUREBRED POLLED BLACK BULL

Lot 35 **TAU GUNNISON 177R**

★ Calved: March 2, 2005 ★ Tattoo: TAU 177R ★ Reg. #: AMGV941241

Birth Weight: 86 Adj. 205-day Wt: 700

VRT Rup Lazy TV Hotfudge J357
 GMCC RUPPLE GUNNISON N31
 RUP Ruppel 919L
 SLC Freedom 178F ET
 TAU MISS FREEDOM 269M
 TAU Ms Twin Pepper 618F

CE	BW	WW	YW	Milk	TM	GL	CED	SC
104	1.7	43	79	16	38	-1.7	104	.3

177R—Black and double polled son of Gunnison that is my kind of bull. He's deep, thick, and has a good muscle shape coming from a very good Freedom second calf heifer.

PUREBRED GELBVIEH