

PUREBRED POLLED BLACK BULL

Lot 31 | **TAU MR FREEDOM 218S**

★ Calved: March 6, 2006 ★ Tattoo: TAU 218S ★ Reg. #: AMGV999734
Birth Weight: 90 **Adj. 205-day Wt: 773**
 VAA Leachman New Day 205B
 SLC FREEDOM 178F ET
 BB Miss 61Y
 GKT Bud 11G
 TAU MS BUD 925J
 TAU Ms Blacksmith 5101E

CE	BW	WW	YW	Milk	TM	GL	CED	SC
104	1.8	47	83	15	39	-3.9	104	.3

218S—Black and double polled attractive son of Freedom from a very good Bud female who has a ww ratio of 107 on 5 calves.

PUREBRED POLLED BLACK BULL

Lot 32 | **TAU MR GUNNISON 257S**

★ Calved: March 23, 2006 ★ Tattoo: TAU 257S ★ Reg. #: AMGV979084
Birth Weight: 80 **Adj. 205-day Wt: 809**
 VRT Rup Lazy TV Hotfudge J357
 GMCC RUPPLE GUNNISON N31
 RUP Ruppel 919L
 SLC Freedom 178F ET
 TAU MISS FREEDOM 4126P
 TAU Ms Dr P of 516E 716G

CE	BW	WW	YW	Milk	TM	GL	CED	SC
106	1.1	42	77	16	37	-1.6	104	.3

257S—Black and double polled son of Gunnison out of Miss Freedom 4126P who was heifer calf champion in Denver. 257S was at her side this summer as she was a class winning cow/calf pair at the Jr. Nationals in South Dakota.

1/2 POLLED RED BULL

Lot 33 | **TAU MR CHATEAU 2S**

★ Calved: January 15, 2006 ★ Tattoo: TAU 2S ★ Reg. #: AMGV999742
Birth Weight: 65 **Adj. 205-day Wt: 644**
 LBC Lman King Rob 8621
 CPH GLACIER CHATEAU 744
 CPH Glacier Rebala
 SLC Freedom 178F ET
 TAU MISS FREEDOM 4187P
 TAU Ms Dr Pepper 0157K

CE	BW	WW	YW	Milk	TM	GL	CED
-3.1	32	78	19	35	-1.7	102	

2S—Red non-diluter and double polled 50% balancer, calving ease Son of Glacier Chateau.

3/8 POLLED HOMOZYGOUS BLACK BULL

Lot 34 | **TAU TRAVELER T510 5S**

★ Calved: January 18, 2006 ★ Tattoo: TAU 5S ★ Reg. #: AMGV999745
Birth Weight: 79 **Adj. 205-day Wt: 702**
 D H D Traveler 6807
 S S TRAVELER 6807 T510
 S S Miss Hi Spade A114
 SLC Freedom 178F ET
 TAU MS FREEDOM 4110P
 TAU Ms Dr Pepper 1013H

CE	BW	WW	YW	Milk	TM	GL	CED
-6	36	83	16	34	-1.6	102	

5S—Homozygous black and double polled, double bred calving ease out of T510 and a Freedom female.

1/2 POLLED HOMOZYGOUS BLACK BULL

Lot 35 | **TAU MR TRAVELER T510 6S**

★ Calved: January 23, 2006 ★ Tattoo: TAU 6S ★ Reg. #: AMGV999750
Birth Weight: 80 **Adj. 205-day Wt: 707**
 D H D Traveler 6807
 S S TRAVELER 6807 T510
 S S Miss Hi Spade A114
 PCCI Power Pac 9070J
 TAU MS POWER PAC 9070 4122P
 TAU Miss Sleepy 108L

CE	BW	WW	YW	Milk	TM	GL	CED
-3	32	73	19	35	-1.0	101	

6S—Homozygous black and double polled out of the calving ease sire T510, with excellent growth from a first calf heifer.



Lot 32

1/2 POLLED HOMOZYGOUS BLACK BULL

Lot 36 | **TAU MR NEWDESIGN 1407 7S**

★ Calved: January 24, 2006 ★ Tattoo: TAU 7S ★ Reg. #: AMGV999760
Birth Weight: 70 **Adj. 205-day Wt: 709**
 B/R New Design 036
 BON VIEW NEW DESIGN 1407
 Bon View Pride 664
 PCCI Jet Pac 1050L
 TAU MISS JET PAC 419P
 TAU Miss Bud 156L

CE	BW	WW	YW	Milk	TM	GL	CED
-2.5	36	82	25	43	-7	102	

7S—Homozygous black and double polled calving ease son of New Design 1407, below average bw with an above ww.

3/8 POLLED HOMOZYGOUS BLACK BULL

Lot 37 | **TAU MR TRAVELER T510 10S**

★ Calved: January 25, 2006 ★ Tattoo: TAU 10S ★ Reg. #: 999763
Birth Weight: 75 **Adj. 205-day Wt: 663**
 D H D Traveler 6807
 S S TRAVELER 6807 T510
 S S Miss Hi Spade A114
 PPF PCCI Power Pac 13F
 TAU MISS POWER PAC 13F 408P
 TAU Miss Freedom 248M

CE	BW	WW	YW	Milk	TM	GL	CED
-2.1	30	73	18	33	-1.5	102	

10S—Homozygous black and double polled 50% balancer son of the calving ease sire T510. 10S will calve easily.

3/4 POLLED HOMOZYGOUS BLACK BULL

Lot 38 **TAU MR TSUNAMI 11S**

★ Calved: January 25, 2006 ★ Tattoo: TAU 11S ★ Reg. #: AMGV999801

Birth Weight: 72 Adj. 205-day Wt: 657

SSL Platinum
BABR TSUNAMI 447P
BABR 0247K

TJB Sleepy 161F ET
TAU MISS SLEEPY 3137N
T G Ext 981 of 566

CE	BW	WW	YW	Milk	TM	GL	CED
1.6	45	83	18	41	-1.9	105	

11S—Homozygous black and double polled son of Tsunami. 11S was born a twin; and his mom is Tanner's best cow.

3/4 POLLED BLACK BULL

Lot 42 **TAU MR FREEDOM 20S**

★ Calved: January 27, 2006 ★ Tattoo: TAU 20S ★ Reg. #: AMGV999771

Birth Weight: 80 Adj. 205-day Wt: 725

VAA Leachman New Day 205B
SLC FREEDOM 178F ET
BB Miss 61Y

N Bar Emulation EXT
TAU N BAR EXT 401P
TAU Miss Freedom 225M

CE	BW	WW	YW	Milk	TM	GL	CED
-0.5	38	81	15	34	-4.1	103	

20S—Black and double polled calving ease son of SLC Freedom out of a first calf heifer that did a nice job of raising him. Find him sale day.

3/4 POLLED BLACK BULL

Lot 39 **TAU MR FREEDOM 12S**

★ Calved: January 26, 2006 ★ Tattoo: TAU 12S ★ Reg. #: AMGV999764

Birth Weight: 75 Adj. 205-day Wt: 660

VAA Leachman New Day 205B
SLC FREEDOM 178F ET
BB Miss 61Y

S S Traveler 6807 T510
TAU MISS TRAVELER 6807 407P
TAU Miss Rodeo Drive 220M

CE	BW	WW	YW	Milk	TM	GL	CED
-0.6	35	80	14	32	-3.6	102	

12S—Black and double polled son of Freedom from a first calf heifer. He is square hipped, thick made, started out at only 75 lbs and has only a -.6 bw EPD.

3/8 POLLED RED BULL

Lot 43 **TAU MR BUSTER 21S**

★ Calved: January 27, 2006 ★ Tattoo: TAU 21S ★ Reg. #: AMGV999773

Birth Weight: 78 Adj. 205-day Wt: 733

LBC LCC Heaven Or Bust 1000B
HLH HLH BUSTER 406 603
HLH HLH Ms Arrow 908 406

SLC Freedom 178F ET
TAU TAU FREEDOM 435P
TAU Miss Big Sky 243M

CE	BW	WW	YW	Milk	TM	GL	CED
-1.8	34	77	13	30	-2.1	102	

21S—Red non-dilluter and double polled 50% balancer son of HLH Buster with a tremendous birth to weaning spread. Find him sale day.

1/2 POLLED HOMOZYGOUS BLACK BULL

Lot 40 **TAU MR HYLINE RIGHT TIME 14S**

★ Calved: January 26, 2006 ★ Tattoo: TAU 14S ★ Reg. #: AMGV999805

Birth Weight: 83 Adj. 205-day Wt: 646

Leachman Right Time
HYLINE RIGHT TIME 338
Hyline Pride 265

TJB Sleepy 7 ET
TAU SLEEPY 100KL
Ms Blackjack 9115J

CE	BW	WW	YW	Milk	TM	GL	CED
-0.7	35	81	21	39	-2.0	102	

14S—Homozygous black and double polled 50% son of Right Time 338 that is very deep sided and easy fleshing in a sound package.

1/2 POLLED HOMOZYGOUS BLACK BULL

Lot 44 **TAU MR TRAVELER 004 28S**

★ Calved: January 28, 2006 ★ Tattoo: TAU 28S ★ Reg. #: AMGV999794

Birth Weight: 103 Adj. 205-day Wt: 653

Sitz Traveler 8180
S A V 8180 TRAVELER 004
Boyd Forever Lady 8003

GKT Bud 11G
TAU MISS BUD 156L
TAU Ms Dr Pepper 1002H

CE	BW	WW	YW	Milk	TM	GL	CED
2.4	40	88	19	39	-0.5	102	

28S—Homozygous black and double polled son of 004, from a moderate framed daughter of Bud. 28S is an attractive, thick made square hipped bull that moves out on good feet and legs. Find him sale day.

1/2 POLLED BLACK BULL

Lot 41 **TAU MR NEW DESIGN 1407 15S**

★ Calved: January 26, 2006 ★ Tattoo: TAU 15S ★ Reg. #: AMGV999766

Birth Weight: 75 Adj. 205-day Wt: 706

B/R New Design 036
BON VIEW NEW DESIGN 1407
Bon View Pride 664

SLC Freedom 178F ET
TAU TAU FREEDOM 427P
TAU 440D

CE	BW	WW	YW	Milk	TM	GL	CED
-2.5	38	86	22	41	-1.8	103	

15S—Double black (RC) and double polled 50% balancer son of New Design 1407 that should calve easily and still maintain growth with good carcass genetics.



Lot 44

BALANCERS

3/4 POLLED RED BULL

Lot 45 **TAU MR FREEDOM 23S**

★ Calved: January 27, 2006 ★ Tattoo: TAU 23S ★ Reg. #: AMGV999774

Birth Weight: 82 Adj. 205-day Wt: 718

VAA Leachman New Day 205B
SLC FREEDOM 178F ET
BB Miss 61YCPH Glacier Chateau 744
TAU MS GLACIER CHATEAU 4148P
TAU Ms Power 743G

CE	BW	WW	YW	Milk	TM	GL	CED
-.4	39	84	14	34	-3.5	105	

23S—Red non-dilluter and double polled 75% balancer son of Freedom with calving ease and growth.

3/4 POLLED HOMOZYGOUS BLACK BULL

Lot 46 **TAU MR GUNNISON 24S**

★ Calved: January 27, 2006 ★ Tattoo: TAU 24S ★ Reg. #: AMGV999775

Birth Weight: 78 Adj. 205-day Wt: 723

VRT Rup Lazy TV Hotfudge J357
GMCC RUPPLE GUNNISON N31
RUP Ruppel 919LConnealy Freightliner
TAU MS FREIGHTLINER 491P
TAU Ms Bud Of 404D 928J

CE	BW	WW	YW	Milk	TM	GL	CED
-.4	38	78	19	38	-1.0	104	

24S—Homozygous black and double polled son of Gunnison, from a very easy fleshing heavy muscled daughter of Connealy Freightliner, who came out small and grew fast.

1/2 POLLED HOMOZYGOUS BLACK BULL

Lot 47 **TAU MR NEW DESIGN 1407 26S**

★ Calved: January 28, 2006 ★ Tattoo: TAU 26S ★ Reg. #: AMGV999777

Birth Weight: 70 Adj. 205-day Wt: 648

B/R New Design 036
BON VIEW NEW DESIGN 1407
Bon View Pride 664TAU T G TY 313L
TAU MISS TY 492P
TAU Ms Blacksmith 758G

CE	BW	WW	YW	Milk	TM	GL	CED
-2.2	36	82	24	42	-1.1	103	

26S—Homozygous black and double polled son of New Design 1407 that should calve easily and make great females.

1/2 POLLED BLACK BULL

Lot 48 **TAU MR TRAVELER T510 33S**

★ Calved: January 29, 2006 ★ Tattoo: TAU 33S ★ Reg. #: AMGV999785

Birth Weight: 86 Adj. 205-day Wt: 758

D H D Traveler 6807
S S TRAVELER 6807 T510
S S Miss Hi Spade A114TAU Freedom 58K
TAU MS FREEDOM 58K 4212P
TAU Miss Sleepy 2119M

CE	BW	WW	YW	Milk	TM	GL	CED
.8	40	85	14	34	-1.2	102	

33S—Double black (RC) and double polled 50% balancer son of Traveler T510 that weaned off heavy from a young first calf heifer.

1/2 POLLED RED BULL

Lot 49 **TAU MR BUSTER 34S**

★ Calved: January 29, 2006 ★ Tattoo: TAU 34S ★ Reg. #: AMGV999788

Birth Weight: 80 Adj. 205-day Wt: 704

LBC LCC Heaven Or Bust 1000B
HLH HLH BUSTER 406 603
HLH HLH Ms Arrow 908 406PCCI Power Pac 9070J
TAU MS POWER PAC 9070 4151P
TAU Miss Freedom 155L

CE	BW	WW	YW	Milk	TM	GL	CED
-1.5	28	69	18	32	-1.4	101	

34S—Red non-dilluter and double polled 50% balancer son of HLH Buster, from a first calf heifer.

3/4 POLLED BLACK BULL

Lot 50 **TAU MR TSUNAMI 37S**

★ Calved: January 31, 2006 ★ Tattoo: TAU 37S ★ Reg. #: AMGV999808

Birth Weight: 92 Adj. 205-day Wt: 707

SSL Platinum
BABR TSUNAMI 447P
BABR 0247KBon View New Design 878
TAU MISS BON VIEW 391N
TAU Ms Dr Pepper 8147H

CE	BW	WW	YW	Milk	TM	GL	CED
2.1	41	82	20	41	-1.3	104	

37S—Double black (RC) and double polled son of our new herd sire Tsunami. He is an extremely heavy muscled bull that has a balanced set of EPDs. 37S is part of the balancer pen in Denver.



Lot 50

1/2 POLLED HOMOZYGOUS BLACK BULL

Lot 51 **TAU MR TRAVELER T510 40S**

★ Calved: January 31, 2006 ★ Tattoo: TAU 40S ★ Reg. #: AMGV999811

Birth Weight: 84 Adj. 205-day Wt: 728

D H D Traveler 6807
S S TRAVELER 6807 T510
S S Miss Hi Spade A114BTI Big Sky 2066K ET
TAU TAU BIG SKY 446P
TAU Ms Blackjack 887H

CE	BW	WW	YW	Milk	TM	GL	CED
.1	37	79	16	35	-.9	103	

40S—Homozygous black and polled son of the popular Angus calving ease sire T510, that maintains excellent growth.

1/2 POLLED BLACK BULL

Lot 52 **TAU MR TC FREEDOM 38S**

★ Calved: January 31, 2006 ★ Tattoo: TAU 38S ★ Reg. #: AMGV999809

Birth Weight: 85 Adj. 205-day Wt: 741

Connealy Forefront
TC FREEDOM 104
T C Ruby 9095

GNG Blacksmith 19B
TAU MS BLACKSMITH 624F
TAU Miss BL Magic 330C

CE	BW	WW	YW	Milk	TM	GL	CED
.4	39	78	24	44	-.6	103	

38S—Black and double polled son of TC Freedom, from a very good moderate framed easy fleshing Blacksmith female that always calves easily. Find him sale day.



Lot 52

3/4 POLLED HOMOZYGOUS BLACK BULL

Lot 53 **TAU MR GUNNISON 42S**

★ Calved: January 31, 2006 ★ Tattoo: TAU 42S ★ Reg. #: AMGV999815

Birth Weight: 92 Adj. 205-day Wt: 683

VRT Rup Lazy TV Hotfudge J357
GMCC RUPPLE GUNNISON N31
RUP Ruppel 919L

TAU T G Ty 313L
TAU TAU TY 433P
TAU Ms Triple Threat 636F

CE	BW	WW	YW	Milk	TM	GL	CED
1.9	39	74	14	34	-.9	104	

42S—Homozygous black and double polled son of Gunnison who is moderate framed and thick from a first calf heifer.

3/4 POLLED BLACK BULL

Lot 54 **TAU MR TSUNAMI 43S**

★ Calved: January 31, 2006 ★ Tattoo: TAU 43S ★ Reg. #: AMGV999816

Birth Weight: 93 Adj. 205-day Wt: 820

SSL Platinum
BABR TSUNAMI 447P
BABR 0247K

Connealy Dateline
TAU MISS DATELINE 3138N
TAU Miss Rainmam 106D

CE	BW	WW	YW	Milk	TM	GL	CED
2.4	51	90	19	45	-1.2	104	

43S—Double black (RC) and double polled son of Tsunami that will be our lead off bull in our balancer pen in Denver. 43S has tremendous growth and muscle mass and an eye appealing package while coming from a very good 2nd calf female who is good uddered and easy fleshing. Don't miss this 3/4 blood balancer bull sale day.

1/2 POLLED HOMOZYGOUS BLACK BULL

Lot 56 **TAU MR HYLINE RIGHT TIME 45S**

★ Calved: January 31, 2006 ★ Tattoo: TAU 45S ★ Reg. #: AMGV999818

Birth Weight: 86 Adj. 205-day Wt: 725

Leachman Right Time
HYLINE RIGHT TIME 338
Hyline Pride 265

POW Jetstream 36B
TAU MS JETSTREAM 939J
TAU 440D

CE	BW	WW	YW	Milk	TM	GL	CED
.7	45	89	21	44	-.5	103	

45S—Homozygous black and double polled 50% balancer son of Right 338 that is very deep sided with a below average bw and above average ww. Dam ww ratio 105 on 6 calves.



Lot 54

1/2 POLLED HOMOZYGOUS BLACK BULL

Lot 55 **TAU MR TRAVELER 8180-004 44S**

★ Calved: January 31, 2006 ★ Tattoo: TAU 44S ★ Reg. #: AMGV999817

Birth Weight: 89 Adj. 205-day Wt: 765

Sitz Traveler 8180
S A V 8180 TRAVELER 004
Boyd Forever Lady 8003

TJB Sleepy 161F ET
TAU MS SLEEPY 0115K
TAU Ms Little Montana 7107G

CE	BW	WW	YW	Milk	TM	GL	CED
102	-.3	45	93	24	47	-.9	103

44S—Homozygous black and double polled son of the popular calving ease Angus sire SAV Traveler 8180. 44S is a large framed big performance sire.

3/4 POLLED RED BULL

Lot 57 **TAU MR FREEDOM 47S**

★ Calved: February 1, 2006 ★ Tattoo: TAU 47S ★ Reg. #: AMGV999820

Birth Weight: 80 Adj. 205-day Wt: 670

VAA Leachman New Day 205B
SLC FREEDOM 178F ET
BB Miss 61Y

S S Traveler 6807 T510
TAU MISS TRAVELER 6807 431P
TAU Miss Freedom 216M

CE	BW	WW	YW	Milk	TM	GL	CED
-.3	36	81	13	31	-4.1	103	

47S—Red non-dilluter and double polled 75% balancer son of Freedom that is heavy muscled and thick made.

BALANCERS

1/2 POLLED HOMOZYGOUS BLACK BULL

Lot 58 **TAU MR TRAVELER 004 51S**

★ Calved: February 1, 2006 ★ Tattoo: TAU 51S ★ Reg. #: AMGV999827

Birth Weight: 87 Adj. 205-day Wt: 638

Sitz Traveler 8180

S A V 8180 TRAVELER 004

Boyd Forever Lady 8003

TAU Dr Pepper 54G

TAU MS 54G 9119J

TAU Ms 002 688 Of GVG

CE	BW	WW	YW	Milk	TM	GL	CED
.0	38	85	24	43	-.3	103	

51S—Homozygous black and double polled 50% balancer 8180 Traveler 004 that comes to you in a thick made attractive package. His dam 9119J is a powerful big middled cow that has plenty of fleshing ability.



Lot 58

3/4 POLLED HOMOZYGOUS BLACK BULL

Lot 59 **TAU MR GUNNISON 56S**

★ Calved: February 3, 2006 ★ Tattoo: TAU 56S ★ Reg. #: AMGV999844

Birth Weight: 89 Adj. 205-day Wt: 756

VRT Rup Lazy TV Hotfudge J357

GMCC RUPPLE GUNNISON N31

RUP Ruppel 919L

Connealy Lead On

TAU MISS LEAD ON 436P

TAU Ms Blacksmith 830H

CE	BW	WW	YW	Milk	TM	GL	CED
1.7	43	81	22	44	-.6	103	

56S—Homozygous black double polled son of Gunnison, whose moderate framed out of a very powerful first calf. Lead On female that milks well with a good udder.

1/2 POLLED HOMOZYGOUS BLACK BULL

Lot 62 **TAU MR AMBUSH 66S**

★ Calved: February 4, 2006 ★ Tattoo: TAU 66S ★ Reg. #: AMGV999308

Birth Weight: 85 Adj. 205-day Wt: 748

B/R Ambush 28

KRAYE AMBUSH JK 433

Bon Toni of JK 2123

KCF Bennett Bonus F95

TAU MISS BENNETTS BONUS 230M

TAU Ms Jerry 0109K

CE	BW	WW	YW	Milk	TM	GL	CED
-.4	45	89	19	42	-.8	104	

66S—Homozygous black and double polled son of Kraye Ambush who is deep sided, has a below average bw and above average ww.

3/4 POLLED HOMOZYGOUS BLACK BULL

Lot 60 **TAU MR GUNNISON 59S**

★ Calved: February 4, 2006 ★ Tattoo: TAU 59S ★ Reg. #: AMGV999852

Birth Weight: 85 Adj. 205-day Wt: 742

VRT Rup Lazy TV Hotfudge J357

GMCC RUPPLE GUNNISON N31

RUP Ruppel 919L

S S Traveler 6807 T510

TAU MS TRAVELER 6807 4103P

TAU Miss Rodeo Drive 261M

CE	BW	WW	YW	Milk	TM	GL	CED
1.1	44	83	18	40	-.6	102	

59S—Homozygous black and double polled, 75% balancer son of Gunnison that is moderate framed from a very good first calf heifer, weaned off with a 108 ww ratio.

1/2 POLLED RED BULL

Lot 63 **TAU MS CHEROKEE CNYN 672S**

★ Calved: February 5, 2006 ★ Tattoo: TAU 672S ★ Reg. #: AMGV999312

Birth Weight: 80 Adj. 205-day Wt: 751

VC Buf Crk Chf 824-1658

BUF BFCK CHEROKEE CNYN 4912

MRM MRM 1431 8611 9109

SLC Freedom 178F ET

TAU MISS FREEDOM 2186M

TAU Ms Peppershaker 533E

CE	BW	WW	YW	Milk	TM	GL	CED
-.9	42	81	16	37	-1.6	101	

672S—Red and double polled 50% balancer son of Cherokee Canyon that started out small (80 lb bw) and grew fast (751 lb ww). Dam ww ratio is 104 on 3 calves.

1/2 POLLED BLACK BULL

Lot 61 **TAU MR TRAVELER 004 65S**

★ Calved: February 4, 2006 ★ Tattoo: TAU 65S ★ Reg. #: AMGV999307

Birth Weight: 88 Adj. 205-day Wt: 705

Sitz Traveler 8180

S A V 8180 TRAVELER 004

Boyd Forever Lady 8003

GNG Blacksmith 19B

TAU MS BLACKSMITH 964J

KMF Fast Miss Sunday 316Z

CE	BW	WW	YW	Milk	TM	GL	CED
.6	42	83	24	45	-.8	103	

65S—Double black (RC) and double polled son of 8180 Traveler 004. He is a larger framed long sided bull with plenty of thickness--find him sale day.

1/2 POLLED HOMOZYGOUS BLACK BULL

Lot 64 **TAU TRAVELER 004 68S**

★ Calved: February 5, 2006 ★ Tattoo: TAU 68S ★ Reg. #: AMGV999309

Birth Weight: 87 Adj. 205-day Wt: 688

Sitz Traveler 8180

S A V 8180 TRAVELER 004

Boyd Forever Lady 8003

TAU Dr Pepper 29D

TAU MS DR PEPPER 024K OF 874H

TAU Ms Blackjack 049F 874H

CE	BW	WW	YW	Milk	TM	GL	CED
.5	42	90	21	42	.0	104	

68S—Homozygous black and double polled son of 8180 Traveler 004 that is large framed from a very good Dr Pepper female.

1/2 POLLED RED BULL

Lot 65 **TAU MR BUSTER 74S**

★ Calved: February 5, 2006 ★ Tattoo: TAU 74S ★ Reg. #: AMGV999317

Birth Weight: 78 Adj. 205-day Wt: 706

LBC LCC Heaven Or Bust 1000B

HLH HLH BUSTER 406 603

HLH HLH Ms Arrow 908 406

TAU Dr Pepper 29D

TAU MS RED PEPPER 913J

TAU Ms Blacksmith 734G

CE	BW	WW	YW	Milk	TM	GL	CED
-1.2	35	75	14	32	-.4	101	

74S—Red non-dilluter and double polled 50% balancer son of Buster, who is very thick made and heavy muscled. 74S started small and grew well.

1/2 POLLED BLACK BULL

Lot 66 **TAU MR AMBUSH 76S**

★ Calved: February 6, 2006 ★ Tattoo: TAU 76S ★ Reg. #: AMGV999322

Birth Weight: 88 Adj. 205-day Wt: 721

B/R Ambush 28

KRAYE AMBUSH JK 433

Bon Toni of JK 2123

TAU Nite Hawk Of 614F 2K ET

TAU MISS NITE HAWK 3181N

TAU Ms Savey 931J

CE	BW	WW	YW	Milk	TM	GL	CED
.8	40	80	17	37	-.5	102	

76S—Black and double polled son of our new Angus sire Kraye Ambusch 433 that will be an alternate in our pen of bulls in Denver. 76S is a very heavy muscled 1/2 blood balancer.

1/2 POLLED HOMOZYGOUS BLACK BULL

Lot 67 **TAU MR RODEO DRIVE 211 78S**

★ Calved: February 6, 2006 ★ Tattoo: TAU 78S ★ Reg. #: AMGV999351

Birth Weight: 70 Adj. 205-day Wt: 694

Sept Rodeo Drive J14

TAU RODEO DRIVE 211L

TAU Ms 049F Of BS 504F856H

Krugerrand of Donamere 490

TAU MS KRUGERRAND 951

T G A Prompter 6807 557E

CE	BW	WW	YW	Milk	TM	GL	CED
1.4	43	83	17	39	-.1	101	

78S—Homozygous black and double polled son of Rodeo Drive 211L, that is well balanced, thick made and deep sided from a very good Angus female, find him sale day.

1/2 POLLED BLACK BULL

Lot 68 **TAU MR HYLINE RIGHT TIME 81S**

★ Calved: February 6, 2006 ★ Tattoo: TAU 81S ★ Reg. #: AMGV999331

Birth Weight: 89 Adj. 205-day Wt: 763

Leachman Right Time

HYLINE RIGHT TIME 338

Hyline Pride 265

WAC Plaines' Anchor 1-503E ET

TAU MS ANCHER 032K

TAU Legacy 109C

CE	BW	WW	YW	Milk	TM	GL	CED
1.8	52	99	22	48	-.6	104	

81S—Black and double polled son of Right Time 338, who is very deep sided and should make some excellent balancer females. Dam ww ratio is 106 on 4 calves.

1/2 POLLED BLACK BULL

Lot 69 **TAU MR HYLINE RIGHT TIME 82S**

★ Calved: February 6, 2006 ★ Tattoo: TAU 82S ★ Reg. #: AMGV999332

Birth Weight: 90 Adj. 205-day Wt: 787

Leachman Right Time

HYLINE RIGHT TIME 338

Hyline Pride 265

GKT Boo Boo 155E

TAU MISS BOO BOO 145L

TAU Ms Dateline 998J

CE	BW	WW	YW	Milk	TM	GL	CED
1.4	47	93	25	49	-1.2	103	

82S—Double black (RC) double polled son of Right Time 338 with excellent performance and fleshing ability in a big middled sound package. His dam 145L is good uddered and heavy muscled with a 103 ww ratio on 4 calves. 82S will be in our pen of three balancers in Denver.



Lot 66

1/2 POLLED HOMOZYGOUS BLACK BULL

Lot 70 **TAU MR TC FREEDOM 83S**

★ Calved: February 6, 2006 ★ Tattoo: TAU 83S ★ Reg. #: AMGV999333

Birth Weight: 92 Adj. 205-day Wt: 801

Connealy Forefront

TC FREEDOM 104

T C Ruby 9095

TJB Sleepy 161F ET

TAU MISS SLEEPY 119L ET

TAU Ms Sleepy 920J

CE	BW	WW	YW	Milk	TM	GL	CED
1.3	50	94	24	49	-1.0	102	

83S—Homozygous black and double polled 50% balancer son of TC Freedom who has tremendous growth in a heavy muscled package from a female who has a 110 ww ratio on her first 4 calves.

1/2 POLLED BLACK BULL

Lot 71 **TAU HYLINE 87S**

★ Calved: February 7, 2006 ★ Tattoo: TAU 87S

Birth Weight: 89 Adj. 205-day Wt: 730

Leachman Right Time

HYLINE RIGHT TIME 338

Hyline Pride 265

PUREBRED GELBIVIEH

CE	BW	WW	YW	Milk	TM	GL	CED
98	2.5	44	86	22	44	-.7	103

87S—Double black and double polled son of Right Time 338. He is extra deep sided and thick. Homozygous Black.

BALANCERS

1/2 POLLED BLACK BULL

Lot 72 **TAU MR TC FREEDOM 88S**

★ Calved: February 7, 2006 ★ Tattoo: TAU 88S ★ Reg. #: AMGV999341

Birth Weight: 88 Adj. 205-day Wt: 694

Connealy Forefront
TC FREEDOM 104
T C Ruby 9095BTI Big Sky 2066K ET
TAU MISS BIG SKY 2206M
TAU Ms Bud 937J

CE	BW	WW	YW	Milk	TM	GL	CED
.5	42	87	20	41	-1.0	102	

88S—Black and double polled 50% balancer from TC Freedom. 88S is a thick made heavy muscled calf. 2206 is a very fertile female, breeding every year.

1/2 POLLED BLACK BULL

Lot 73 **TAU MR TRAVELER 004 90S**

★ Calved: February 7, 2006 ★ Tattoo: TAU 90S ★ Reg. #: AMGV999343

Birth Weight: 94 Adj. 205-day Wt: 716

Sitz Traveler 8180
S A V 8180 TRAVELER 004
Boyd Forever Lady 8003GNG Blacksmith 19B
TAU MS BLACKSMITH 0178K
BMB 648Y

CE	BW	WW	YW	Milk	TM	GL	CED
1.0	44	89	23	45	-.7	99	

90S—Double black (RC) and double polled son of the popular 8180 Traveler 004. 90S is a large framed bull that will give you calves with that extra weight needed to maximize profit for you at sale time.

1/2 POLLED BLACK BULL

Lot 74 **TAU MR TRAVELER 004 92S**

★ Calved: February 7, 2006 ★ Tattoo: TAU 92S ★ Reg. #: AMGV999349

Birth Weight: 84 Adj. 205-day Wt: 697

Sitz Traveler 8180
S A V 8180 TRAVELER 004
Boyd Forever Lady 8003GNG Blacksmith 19B
TAU MS BLACKSMITH 589E
TAU Miss Contender 923Y

CE	BW	WW	YW	Milk	TM	GL	CED
.6	41	85	22	43	-.4	103	

92S—Double black (RC) and double polled son of 8180 Traveler 004 who is a large framed, long spined balancer.

PUREBRED POLLED RED BULL

Lot 75 **TAU MR BUSTER 96S**

★ Calved: February 8, 2006 ★ Tattoo: TAU 96S ★ Reg. #: AMGV999365

Birth Weight: 82 Adj. 205-day Wt: 674

LBC LCC Heaven Or Bust 1000B
HLH HLH BUSTER 406 603
HLH HLH Ms Arrow 908 406SLC Freedom 178F ET
TAU FREEDOM 1179L
TAU Ms Power 743G

CE	BW	WW	YW	Milk	TM	GL	CED
104	1.0	37	74	15	34	-2.0	105

96S—Red double polled son of HLH Buster from a big stout Freedom female.

1/2 POLLED BLACK BULL

Lot 76 **TAU MR AMBUSH 102S**

★ Calved: February 9, 2006 ★ Tattoo: TAU 102S ★ Reg. #: AMGV999375

Birth Weight: 85 Adj. 205-day Wt: 709

B/R Ambush 28
KRAYE AMBUSH JK 433
Bon Toni of JK 2123PCCI Power Pac 9070J
TAU MISS POWER PAC 2202M
TAU Ms Blacksmith 756G

CE	BW	WW	YW	Milk	TM	GL	CED
-.3	39	81	21	41	-.8	102	

102S—Black and double polled son of Kraye Ambush, who is heavy muscled and comes from a very good milking female.

1/2 POLLED HOMOZYGOUS BLACK BULL

Lot 77 **TAU MR AMBUSH 110S**

★ Calved: February 10, 2006 ★ Tattoo: TAU 110S ★ Reg. #: AMGV999388

Birth Weight: 90 Adj. 205-day Wt: 816

B/R Ambush 28
KRAYE AMBUSH JK 433
Bon Toni of JK 2123WAC Blackjack 049F
TAU MISS BLACKJACK 394N
TAU Ms Black Freedom 907J

CE	BW	WW	YW	Milk	TM	GL	CED
-1.0	47	91	20	44	-1.2	103	

110S—Homozygous black and double polled son of Kraye Ambush that is large framed and heavy, 816 lb ww. For extra pounds at weaning weight, find 110S sale day.

1/2 POLLED BLACK BULL

Lot 78 **TAU MR TRAVELER 112S**

★ Calved: February 10, 2006 ★ Tattoo: TAU 112S ★ Reg. #: AMGV999390

Birth Weight: 84 Adj. 205-day Wt: 716

Sitz Traveler 8180
S A V 8180 TRAVELER 004
Boyd Forever Lady 8003TAU Dr Pepper 29D
TAU MS DR PEPPER 081K
TAU Ms Blackcat 519E

CE	BW	WW	YW	Milk	TM	GL	CED
.3	44	94	19	41	-.4	101	

112S—Black and double polled son of 8180-004 from a very good Dr. Pepper female.



Lot 75

1/2 POLLED RED BULL

Lot 79 **TAU MR CHEROKEE CANYON 114S**

★ Calved: February 10, 2006 ★ Tattoo: TAU 114S ★ Reg. #: AMGV999394

Birth Weight: 82 Adj. 205-day Wt: 724VC Buf Crk Chf 824-1658
BUF BFCK CHEROKEE CNYN 4912
MRM MRM 1431 8611 9109SLC Freedom 178F ET
TAU MISS FREEDOM 157L
TAU Ms 1A Of 357C 781G

CE	BW	WW	YW	Milk	TM	GL	CED
-1.3	39	80	19	39	-2.0	102	

114S—Red non-dilluter and double polled 50% balancer son of Cherokee Canyon that is moderate framed, thick made and clean fronted with very good growth.

1/2 POLLED HOMOZYGOUS BLACK BULL

Lot 80 **TAU MR TRAVELER 004 122S**

★ Calved: February 12, 2006 ★ Tattoo: TAU 122S ★ Reg. #: AMGV999412

Birth Weight: 87 Adj. 205-day Wt: 696Sitz Traveler 8180
S A V 8180 TRAVELER 004
Boyd Forever Lady 8003JNS Mr Image 6E ET
TAU MISS BLAC IMAGE 144L
TAU Ms Blacksmith 6107F

CE	BW	WW	YW	Milk	TM	GL	CED
104	.9	43	87	20	42	-.3	102

122S—Homozygous and double polled son of 8180-004. 122S may be the heaviest muscled son of 004 in the sale. See if you agree sale day.

1/2 POLLED RED BULL

Lot 81 **TAU MR KING ROB 124S**

★ Calved: February 12, 2006 ★ Tattoo: TAU 124S ★ Reg. #: AMGV999731

Birth Weight: 84 Adj. 205-day Wt: 803JHL Leachman Robust 7222
LBC LMAN KING ROB 8621
LBC Leachman EleanorSLC Freedom 178F ET
TAU MISS FREEDOM 226M
TAU Miss Toby 491D

CE	BW	WW	YW	Milk	TM	GL	CED
.8	45	93	22	45	-1.9	101	

124S—Red non-dilluter and double polled 50% balancer son of King Rob. 124S is a heavy muscled, high performance Red Angus Balancer. Dam ww ratio is 106 on 3 calves.

3/4 POLLED RED BULL

Lot 82 **TAU MR FREEDOM 126S**

★ Calved: February 13, 2006 ★ Tattoo: TAU 126S ★ Reg. #: AMGV999418

Birth Weight: 79 Adj. 205-day Wt: 740VAA Leachman New Day 205B
SLC FREEDOM 178F ET
BB Miss 61YCPH Glacier Chateau 744
TAU MISS CHATEAU 4125P
TAU Miss Dr Pepper 2158M

CE	BW	WW	YW	Milk	TM	GL	CED
-.1	39	81	14	34	-3.1	104	

126S—Red non-dilluter and double polled 75% balancer out of Freedom. 126S is from a very good Chateau first calf heifer (maybe my favorite heifer--find 126S sale day.

3/4 POLLED BLACK BULL

Lot 83 **TAU MR HOT FUDGE 128S**

★ Calved: February 13, 2006 ★ Tattoo: TAU 128S ★ Reg. #: AMGV999732

Birth Weight: 89 Adj. 205-day Wt: 746WAC Fullback 011G
VRT RUP LAZY TV HOTFUDGE J357
VRT F091AN
TAU MS 801X 516E
TAU Miss Legacy 353C

CE	BW	WW	YW	Milk	TM	GL	CED
2.0	44	82	16	38	.9	104	

128S—Double black (RC) and double polled 3/4 son of Hot Fudge who has excellent performance and muscle shape. Dam has a 99 bw and a 102 ww ratio on 10 calves.



Lot 83

1/2 POLLED HOMOZYGOUS BLACK BULL

Lot 84 **TAU HYLINE RIGHT TIME 129S**

★ Calved: February 13, 2006 ★ Tattoo: TAU 129S ★ Reg. #: AMGV999420

Birth Weight: 91 Adj. 205-day Wt: 806Leachman Right Time
HYLINE RIGHT TIME 338
Hyline Pride 265GNG Blacksmith 19B
TAU MS BLACKSMITH 830H
TAU Ms Toby 683F

CE	BW	WW	YW	Milk	TM	GL	CED
1.9	51	94	23	49	-.6	100	

129S—Homozygous black and double polled son of Right Time 338, that is a deep sided thick made calf with excellent growth. 129S has an impressive 806 lb ww from a cow with a 104 ww ratio on 7 calves.

1/2 POLLED BLACK BULL

Lot 85 **TAU MR TRAVELER 004 133S**

★ Calved: February 14, 2006 ★ Tattoo: TAU 133S ★ Reg. #: AMGV999735

Birth Weight: 96 Adj. 205-day Wt: 764Sitz Traveler 8180
S A V 8180 TRAVELER 004
Boyd Forever Lady 8003TAU Dr Pepper 29D
TAU MS PEPPER OF 707W 880H
TAU 707W

CE	BW	WW	YW	Milk	TM	GL	CED
1.2	49	98	20	45	.1	102	

133S—Double black (RC) and double polled son of 004 with that extra growth. Dam ww ratio 108 on 6 calves, that's impressive.

BALANCERS

1/2 POLLED HOMOZYGOUS BLACK BULL

Lot 86 | **TAU MS RODEO DRIVE 141S**

★ Calved: February 15, 2006 ★ Tattoo: TAU 141S ★ Reg. #: AMGV999434

Birth Weight: 95 Adj. 205-day Wt: 675

Sept Rodeo Drive J14
TAU RODEO DRIVE 211L
TAU Ms 049F Of BS 504F856HBon View Bando 598
T G B V B 598 997 OF 037
H F Extraordinary 037

CE	BW	WW	YW	Milk	TM	GL	CED
.7	35	69	15	33	-.1	101	

141S—Homozygous black and double polled 50% balancer son of Rodeo Drive 211L that is moderate framed and heavy muscled. 997 is a very thick made easy fleshing female.

1/2 POLLED BLACK BULL

Lot 87 | **TAU MR STRUCTURE 145S**

★ Calved: February 15, 2006 ★ Tattoo: TAU 145S ★ Reg. #: AMGV999442

Birth Weight: 85 Adj. 205-day Wt: 734

TC Stockman 365
G 13 STRUCTURE
G 13 Traveler 9428GNG Blacksmith 19B
TAU MISS BLACKSMITH 565E
TAU Legacy 109C

CE	BW	WW	YW	Milk	TM	GL	CED
-.3	44	82	17	39	-.8	103	

145S—Double black (RC) and double polled son of Structure G13, who is heavy muscled and long sided with excellent growth. Dam ww ratio is 105 on 8 calves.

1/2 POLLED HOMOZYGOUS BLACK BULL

Lot 88 | **TAU ONIX 146S**

★ Calved: February 15, 2006 ★ Tattoo: TAU 146S

Birth Weight: 87 Adj. 205-day Wt: 690

RAG Mr Extra Wonderful ET
OGSG MASTER ONIX 247M
DGD Sylvia 747GOLC Stetson V058Y
WB ELEGANC 1152
WB Elegance 365

CE	BW	WW	YW	Milk	TM	GL	CED
101	2.0	34	76	12	29	-.1	103

146S—Homozygous polled and son of Onix that is heavy muscled and large framed. Black and polled.

1/2 POLLED BLACK BULL

Lot 89 | **TAU MR TSUNAMI 183S**

★ Calved: February 22, 2006 ★ Tattoo: TAU 183S ★ Reg. #: AMGV999525

Birth Weight: 83 Adj. 205-day Wt: 740

SSL Platinum
BABR TSUNAMI 447P
BABR 0247KBonview New Design 878
TAU MS NEW DESIGN 878-303
TG Ms Pfred 138L Of 9128

CE	BW	WW	YW	Milk	TM	GL	CED
.5	38	74	15	34	-1.2	102	

183S—Homozygous black and polled, son of Tsunami, that is heavy muscled and long sided. He looks like so many of the Tsunami do.

1/2 POLLED BLACK BULL

Lot 90 | **TAU MR TRAVELER 004 185S**

★ Calved: February 22, 2006 ★ Tattoo: TAU 185S ★ Reg. #: AMGV999510

Birth Weight: 87 Adj. 205-day Wt: 785

Sitz Traveler 8180
S A V 8180 TRAVELER 004
Boyd Forever Lady 8003CTRG Dateline 405D ET
TAU MS TWIN OF DATELINE 996J
TAU Miss Legacy 364C

CE	BW	WW	YW	Milk	TM	GL	CED
1.9	55	107	25	53	-.4	102	

185S—Double black (RC) and double polled 50% balancer son of 004 that is large framed with excellent growth coming off the cow at 785 lbs.

1/2 POLLED HOMOZYGOUS BLACK BULL

Lot 91 | **TAU GUNNISON 195S**

★ Calved: February 24, 2006 ★ Tattoo: TAU 195S

Birth Weight: 88 Adj. 205-day Wt: 702

VRT Rup Lazy TV Hotfudge J357
GMCC RUPPLE GUNNISON N31
RUP Ruppel 919LBCC Bushwacker 41-93
TAU BUSHWACKER 469
WB Erylan Husker 1238

CE	BW	WW	YW	Milk	TM	GL	CED
108	.5	39	71	19	39	-.6	105

195S—Homozygous black and double polled son of Gunnison out of a very good first calf heifer.

1/2 POLLED BLACK BULL

Lot 92 | **TAU MR KRUGERRAND 70M 198S**

★ Calved: February 25, 2006 ★ Tattoo: TAU 198S ★ Reg. #: AMGV999533

Birth Weight: 85 Adj. 205-day Wt: 659

Krugerrand Of Donamere 490
TAU KRUGERRAND 70M
T G A Prompter 6807 557ESLC Freedom 178F ET
TAU MS FREEDOM 016K 863K
TAU Ms Nitehawk 863H

CE	BW	WW	YW	Milk	TM	GL	CED
-.3	31	75	12	28	-1.9	101	

198S—Black and double polled son of our Angus herd sire 70M; out of a very moderate framed easy fleshing Freedom female. 198S is like his dam in that he is moderate framed and heavy muscled.



Tennessee Cattle Association stopped at Taubenheim Gelbvieh to view Gelbvieh cattle.

1/2 POLLED BLACK BULL

Lot 93 **TAU MR KRUGERRAND 70M 199S**

★ Calved: February 25, 2006 ★ Tattoo: TAU 199S ★ Reg. #: AMGV999534

Birth Weight: 89 Adj. 205-day Wt: 775

Krugerrand Of Donamere 490
TAU KRUGERRAND 70M
T G A Prompter 6807 557E

PCCI Power Pac 9070J
TAU MISS POWER PAC 2179M
TAU Ms Dr Pepper 747G

CE	BW	WW	YW	Milk	TM	GL	CED
1.1	44	88	20	42	-6	100	

199S—Black and double polled son of 70M who has tremendous performance from a very productive female. 2179M has a 100 bw ratio and a 113 ww ratio on 3 calves--impressive.

3/4 POLLED RED BULL

Lot 94 **TAU MS FREEDOM 209S**

★ Calved: March 2, 2006 ★ Tattoo: TAU 209S ★ Reg. #: AMGV999560

Birth Weight: 90 Adj. 205-day Wt: 844

VAA Leachman New Day 205B
SLC FREEDOM 178F ET
BB Miss 61Y

AR
TAU MS BUSTER 017K OF 850H
TAU Ms Appollo 850H

CE	BW	WW	YW	Milk	TM	GL	CED
1.0	41	80	14	35	-3.3	103	

209S—Red non-dilluter and double polled 75% balancer son of Freedom with exceptional growth, weaning off at 844 lbs. That is no surprise coming from a cow like 017K who has a 105 ww ratio on 4 calves.

1/2 POLLED HOMOZYGOUS BLACK BULL

Lot 95 **TAU MR TC FREEDOM 210S**

★ Calved: March 2, 2006 ★ Tattoo: TAU 210S ★ Reg. #: AMGV999561

Birth Weight: 87 Adj. 205-day Wt: 745

Connealy Forefront
TC FREEDOM 104
T C Ruby 9095
GNG Blacksmith 19B
TAU MS BLACKSMITH 9166J
TAU Miss Magic 102D ET

CE	BW	WW	YW	Milk	TM	GL	CED
.4	43	83	25	47	-1.0	103	

210S—Homozygous black and double polled son of TC Freedom with excellent growth and muscle. Dam ww ratio is 104.

1/2 POLLED BLACK BULL

Lot 96 **TAU MR KRUGERRAND 70M 215S**

★ Calved: March 4, 2006 ★ Tattoo: TAU 215S ★ Reg. #: AMGV999579

Birth Weight: 90 Adj. 205-day Wt: 793

Krugerrand Of Donamere 490
TAU KRUGERRAND 70M
T G A Prompter 6807 557E

GNG Blacksmith 19B
TAU MS BLACKSMITH 9132J
TAU Ms Toby 5105E

CE	BW	WW	YW	Milk	TM	GL	CED
1.6	44	84	17	39	-8	101	

215S—Black and double polled son of our Angus herd sire 70M that has excellent growth, weaning off at 793 lbs. Dam ww ratio is 105 on 5 head. Find him sale day.

1/2 POLLED HOMOZYGOUS BLACK BULL

Lot 97 **TAU MR TC FREEDOM 217S**

★ Calved: March 5, 2006 ★ Tattoo: TAU 217S ★ Reg. #: AMGV999581

Birth Weight: 90 Adj. 205-day Wt: 761

Connealy Forefront
TC FREEDOM 104
T C Ruby 9095

DBC Little Montana 67E
TAU MS LITTLE MONTANA 7107G
TAU Miss Blacksmith 525E

CE	BW	WW	YW	Milk	TM	GL	CED
.2	47	89	23	47	-6	103	

217S—Homozygous black and double polled son of the popular Angus sire TC Freedom, who has excellent muscle shape along with above average growth from a very good female.

1/2 POLLED BLACK BULL

Lot 98 **TAU MR AMBUSH 222S**

★ Calved: March 8, 2006 ★ Tattoo: TAU 222S ★ Reg. #: AMGV999588

Birth Weight: 86 Adj. 205-day Wt: 769

B/R Ambush 28
KRAYE AMBUSH JK 433
Bon Toni of JK 2123

SLC Freedom 178F ET
TAU MISS FREEDOM 2204M
TAU Ms Staurt 696F

CE	BW	WW	YW	Milk	TM	GL	CED
-.4	43	90	19	41	-1.9	102	

222S—Black and double polled 50% balancer son of Kraye Ambush with excellent growth from one of my favorite Freedom females on the farm. 222S has an excellent set of EPDs. Find him sale day.

1/2 POLLED HOMOZYGOUS BLACK BULL

Lot 99 **TAU MR AMBUSH 242S**

★ Calved: March 15, 2006 ★ Tattoo: TAU 242S ★ Reg. #: AMGV999614

Birth Weight: 88 Adj. 205-day Wt: 829

B/R Ambush 28
KRAYE AMBUSH JK 433
Bon Toni of JK 2123

Sept Rodeo Drive J14
TAU MISS RODEO DRIVE 2200M
TAU Ms Dr Pepper 9120J

CE	BW	WW	YW	Milk	TM	GL	CED
.4	46	90	16	39	-.1	101	

242S—Homozygous black and double polled son of Kraye Ambush, with excellent growth and performance. Find him sale day.



920 — Dam of Lots 7, 21, 27, and 29

1/2 POLLED BLACK BULL

Lot 100 *TAU 70M 861*

★ Calved: September 12, 2005 ★ Tattoo: TAU 861R
Birth Weight: NA Adj. 205-day Wt: 676 Adj. Y.W. Wt: 1136
 Krugerrand Of Donamere 490
TAU KRUGERRAND 70M
 T G A Prompter 6807 557E
 WAC 049F Blackjack
MS BLACKJACK 861H
 TAU 151A Miss Legacy

CE	BW	WW	YW	Milk	TM	GL	CED
98	-.5	36	78	17	36	-.8	101

861R—Double black (RC) and double polled fall born son 70M, that has that extra age and size to breed more cows this year. His dam is a very heavy muscled deep sided, easy fleshing female.

1/2 POLLED HOMOZYGOUS BLACK BULL

Lot 101 *TAU KRUGERRAND 70M 312R*

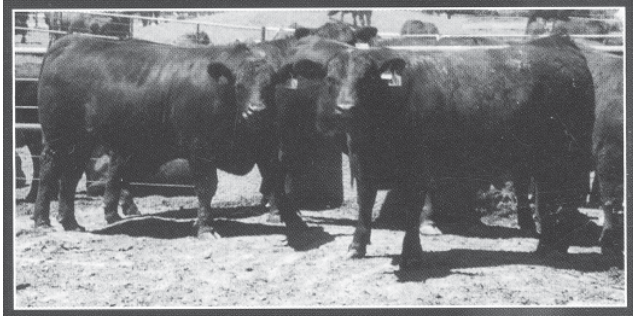
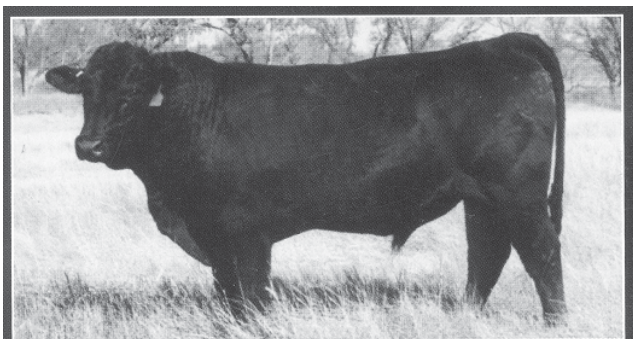
★ Calved: September 20, 2005 ★ Tattoo: TAU 312R
Birth Weight: NA Adj. 205-day Wt: 688 Adj. Y.W. Wt: 1126
 Krugerrand of Donamere 490
TAU KRUGERRAND 70M
 T G A Prompter 6807 557E
 TJB Sleepy 161F ET
TAU MS SLEEPY OF 8100 050M
 TAU Ms Blacksmith 8100H

CE	BW	WW	YW	Milk	TM	GL	CED
100	.5	33	72	18	33	-.6	101

312R—Homozygous black and double polled son of 70M out of a very good uddered Sleepy sire female.

Hybrid Vigor Pays!

Trait	Advantage of Crossbred vs. Straightbred
Cow efficiency	8%
Cow longevity	38%
Cow lifetime productivity	25%
Calf Weaning Weight	5%
Total Avg. Annual Dollar Impact	\$116.88



1/2 POLLED BLACK BULL

Lot 102 *TAU 67S NEWDESIGN*

★ Calved: February 5, 2006 ★ Tattoo: TAU 67S
Birth Weight: 74 Adj. 205-day Wt: 678
 B/R New Design 036
BON VIEW NEW DESIGN 1407
 Bon View Pride 664
 BCC Bushwacker 41-93
TAU BUSHWACKER 416
 TAU Ms New Design 878 255

BW	WW	YW	Milk
.05	36	76	18

67S—Calving ease Black Angus genetics.

Balancer™

**What the Industry Wants...
 What the Industry Needs!**

There are sound reasons that a majority of pork and poultry market animals are already the product of hybrid genetics—Consistency, predictability and economic efficiency.

Balancers offer commercial cattle producers these same advantages today.

Balancer breeders understand that a single breed cannot fit all of the challenges of the beef industry. They understand that the commercial cattle business drives the success of the seedstock industry. That's why they design their breeding programs and align their partnerships with the interest of the commercial industry foremost in their minds. In this case, Balancers are backed up by the same genetic documentation and programs that commercial users enjoy through the American Gelbvieh Association.

✓ The American Gelbvieh Association was the first breed association to offer commercial users a commercial marketing program that includes everything from help in selecting genetics to help in marketing Gelbvieh-sired calves. All at no charge.

✓ The Gelbvieh Alliance—open to all cattle—was the first breed-coordinated grid-based marketing system in the industry. It is still the largest of its kind.

✓ Most recently, the American Gelbvieh Association was the first breed organization to design and promote a crossbreeding system (SmartCross) aimed at helping commercial producers to easily take advantage of heterosis.

"Crossbreeding offers too much to ignore, including the opportunity to match complementary breeds to environments and markets, and even more importantly, the heterosis you can get to increase the pounds of calf produced per cow exposed."

—Harlan Ritchie, Distinguished Professor of Animal Science, Michigan State University