

*22nd Annual*  
**TAUBENHEIM  
GELBVIIEH  
Production Sale**



**Monday  
February 6, 2012  
1:00 p.m.**

**Sale Facility At The Ranch  
23685 Sartoria Rd. • Amherst, NE 68812**

## Welcome Cattlemen

Cattlemen, we would like to start by extending a big hello from all of us at Taubenheim Gelbvieh. It is that time of year again and we want to invite all of you to our 22<sup>nd</sup> annual production sale at the ranch on Monday, February 6, 2012.

What a year 2011 was at the Taubenheim Ranch. Loads of grass and a powerful set of mothers led to a very growthy set of bulls. This year's offering is the most powerful and complete set we have ever offered. Year after year we believe this, and it is a testament to the improvements that our cowherd has made over the years. The bulls are packed with muscle shape, soggy middle, and easy fleshing. Look for our bulls to add pounds at weaning, feed efficiency, and great maternal strength. The overall disposition of this year's offering is well above our expectations; and I hope you are as pleased with the group as we are. Justin says they are the best we have ever offered.

Last spring we had calves by the old standby SLC Freedom, Gunnison, Tsunami, MYTTY in Focus, and SAV Final Answer. We also continue to use our new young herdsires such as TAU 43T Grid Topper; many pedigrees for great outcross genetics. A large portion of the offering are by A.I. sires giving you, the cattlemen, a great opportunity to increase many traits in your cowherds.

The offering is 100% polled, with nearly 60 homozygous black bulls to choose from. Feel free to stop by and view the bulls at your convenience--there will always be someone at the farm to assist you.

Again this year we will be offering 30 bred heifers that have been ultra-sounded pregnant. Some of these females will have calves come sale day, while others will be close to calving. We feel that this is a great opportunity for you to take some of our genetics back to your own herd.

This year we will be exhibiting a pen of balancers and purebred bulls at the National Western Stock Show in Denver. This year's pens are quite possibly the most uniform sets we have ever had. If you come down to Denver, feel free to stop by the yards and check out the bulls, if you're lucky we might be grilling on the Traeger grill.

In the end, we are very proud of the bulls and heifers and what they have to offer. There is something for everyone in our offering. Whether you need black, red, calving ease, growth traits, we can satisfy any need. At Taubenheim Gelbvieh our goal has always been to satisfy the customer and help you to make a profit and that is exactly what we are doing in 2012.

I look forward to talking to you in the near future, and don't forget to mark your calendars for February 6<sup>th</sup>. Hope to see you soon.

*THANKS,*

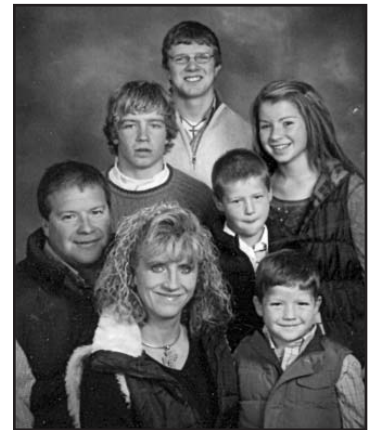
The Taubenheims

Dale, Jeannette  
308-826-4771

Mike, Renee,  
Justin, Tanner, Sydney, Seth, Kale  
Mike: 308-233-4704 / Justin: 308-293-0692



Ivan, Lynette, Ashton, Maxwell,  
George & Nora



Mike, Renee, Justin, Tanner,  
Sydney, Seth & Kale



Kaisha & Kacie



Christy & Doug



Lucy, Harper & Sadie

**Welcome to the  
22nd Annual  
Taubenheim Gelbvieh Production Sale  
Monday, February 6, 2012 1:00 p.m. (CST)  
Sale Facility At The Ranch  
23685 Sartoria Rd • Amherst, NE 68812**

**SELLING**

**104 Bulls 30 Open Females 30 Bred Females**

**HERD HEALTH**

All bulls have had shots and been poured. Necessary health papers will be supplied with each sale animal.

**TRUCKING**

Free trucking on bulls of \$3,500 or more otherwise to central location.

**All announcements from block take precedence over all written material.**

**Registration papers available.**

**Retaining 1/2 semen rights on all bulls.**

**Taubenheim Gelbvieh is not responsible for any accidents.**

**TAUBENHEIM GELBIEH FIRST SEASON BREEDING GUARANTEE**

Buyers of all bulls selling for \$3,000 or more injured the first breeding season, will have credit at the next sale at the value of the purchase price minus salvage value. Contact Taubenheim Gelbvieh promptly so the decision to return the bull to Taubenheim Gelbvieh or sold by buyer may be made. Breeding season is defined as the 90 day period following the first turnout of the bulls.

In the event of death of a bull during the first breeding season, a credit of 50% of the sale price will be applied at the next sale for a bull.

If you have a problem and are in need of a replacement for any reason, please contact Taubenheim Gelbvieh as we will be glad to be of service.

**Terms of Sale: Cash**

**BULL BUYERS**

**All bulls selling are eligible for free board until April 1, 2012**

**In Case of Inclement Weather, Call Sale Day Phone  
or Listen to KRVN for Information**

**Livestock Press Representatives**

Ringmen (Nebraska Farmer) Galen Gerdes, 308-380-0302  
Livestock Plus ..... Randy Rasby, 308-539-6195  
Midwest Messenger ..... Chris Beutler, 402-380-8244

**Motel Accommodations**

Microtel Inn ..... 308-698-3003  
Hampton Inn ..... 308-234-3400

**AUCTIONEER:** Tracy Harl, 2420 N. 2nd Avenue, Hastings, NE 68901 402-461-3575

*Join us for complimentary sale day beef lunch cooked on a Traeger!*

**Sale Day Phone: 308-826-4771 / Cell: 308-627-5054/308-222-0138/308-233-4704**

**Jim Blackwell will be taking bids again at the above phone numbers.**

**FOR INFORMATION CONTACT:**

**Dale Taubenheim**  
23685 Sartoria Rd., Amherst, NE 68812  
308-826-4771 or 308-222-0138  
Email: dtaubenheim@aol.com

**Mike Taubenheim**  
19035 Grand Island Rd., Amherst, NE 68812  
308-233-4704  
Justin: 308-293-0692 j\_tauby5@hotmail.com

**www.taubenheimgelbvieh.com**

PUREBRED POLLED RED BULL

## A SLC FREEDOM 178F ET

Calved: February 26, 1996 ★ Tattoo: 178F

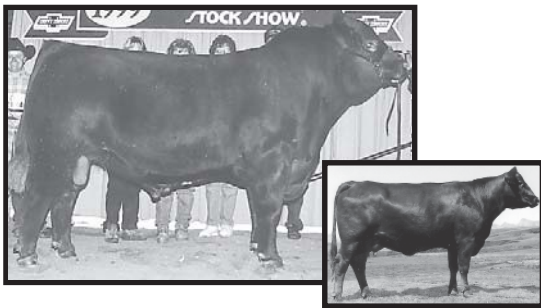
Birth Weight: 88 Adj. 205-day Wt: 599 Adj. 365-day Wt: 1196

GLT Sensation's Day 21Y .....	LAR Mr Sensation 506S
VAA LEACHMAN NEW DAY 205B	IHF Miss Ing-Ho 29S
VAA 023Z .....	ATM Tejas Rolls Roych 868
	VAA 790W
BB Mr Forkas 1S (JSE M2) .....	Bold Forkus 9807297
BB MISS 61Y	Hope Valley Klara
BB Bell Orchid .....	CRO Willox Belgrade 11 Miner
	BB Gold Star 107R

—INDIVIDUAL EPDs—

CE: 106 BW: -0.4 WW: 40 YW: 82 Milk: 9 TMAT: 29 Gest: -5.8 CED: 105

Homozygous polled deep dark red. Another out cross purchased to use on our close net bloodlines. 1999 National Champion Gelbvieh bull in Denver. True calving ease, will really shorten gestation length. Dam has sold over \$150,000 worth of progeny to date. Extremely wide and structurally correct. Unlimited genetic potential.



SLC FREEDOM and Dam

3/8 POLLED BLACK BULL

## B TAU MR GRID TOPPER 43T

AMGV1036179 ★ Calved: February 2, 2007 ★ Tattoo: 43T

Birth Weight: 90 Adj. 205-day Wt: 591

TC GRID TOPPER 355 G A R Grid Maker  
TC Pride 8067

TAU MISS TY 3130N TAU T G Ty 313L  
TAU Freedom 102L

—INDIVIDUAL EPDs—

CE: 105 BW: -3 WW: 42 YW: 87 Milk: 9 TMAT: 30 Gest: -2.2 CED: 103

43T was a member of our 2008 Reserve National Champion Pen of 3 Balancers. He has really been doing the job for us, his progeny are flawless in their structure and balanced in their type, with plenty of rib and muscle. He makes them right.



TAU Mr Grid Topper 43T

PUREBRED POLLED BLACK BULL

## C HYEK BLACK IMPACT 3960N

AMGV844875 ★ Calved: February 7, 2003 ★ Tattoo: 3960N

HYEK BLACK IMPULSE 1296L ELK CK Scorpion 2343H ET  
OAKK Valley Lady 296J

HYEK BLACK RUBY 9604J FHG Flying H Extra 150D  
HYEK Dottie F6048

—INDIVIDUAL EPDs—

CE: 106 BW: -1 WW: 41 YW: 68 Milk: 15 TMAT: 36 Gest: -5.9 CED: 98

HYEK Black Impact is a bull that we turned to to make females and add power to our herd, and he most certainly has done that. He makes them functional and we will use him for years to come because of that fact.

PUREBRED POLLED BLACK BULL

## D GMCC RUPPLE GUNNISON N31

AMGV854851 ★ Calved: January 12, 2003 ★ Tattoo: GMCCN31

Birth Weight: 86 Adj. 205-day Wt: 849 Adj. 365-day Wt: 1178

VRT RUP LAZY TV HOTFUDGEJ357 WAC Fullback 011G  
VRT F091

RUP RUPPLE 919L GKT Bud 11G

RUP Ruppel J Precision 715J

—INDIVIDUAL EPDs—

CE: 107 BW: 0.7 WW: 37 YW: 63 Milk: 19 TMAT: 38 Gest: -0.4 CED: 102

Homozygous black and homozygous polled herd sire we purchased from Corry Ruppel, to use as an outcross in our herd, and for cattlemen who have been using our bulls for several years. Gunnison is doing a great job of breeding desirable traits as you will see his calves come easy and are excellent in giving fleshing ability, muscle, and depth of rib. You will appreciate his calves sale day.

PUREBRED POLLED BLACK BULL

## E S A V FINAL ANSWER 0035

13592905 ★ Calved: February 22, 2000 ★ Tattoo: 0035

Birth Weight: 69 Adj. 205-day Wt: 843 Adj. 365-day Wt: 1360

SITZ TRAVELER 8180 G D A R Traveler 71  
Sitz Everelda Entense 1137

S A V EMULOUS 8145 Bon View Bando 598  
S A V Sky Emulous 2124

—INDIVIDUAL EPDs—

BW: -1.0 WW: 61 YW: 104 Milk: 19

Final Answer is quite likely the most well rounded proven A.I. sire in existence today with his combination of low birth weight, good growth to a year, top 4% RE and unmatched maternal and fertility.



PUREBRED POLLED BLACK BULL

## F MYTTY IN FOCUS 109

AAA13880818 ★ Calved: February 18, 2001 ★ Tattoo: 109

Birth Weight: 77 Adj. 205-day Wt: 766

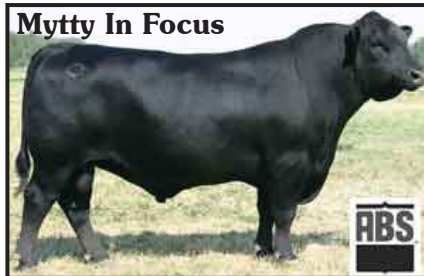
SAF FOCUS OF ER SAF Fame  
GDAR Forever Lady 246

MYTTY COUNTESS 906 Sitz Alliance 6595  
Baldrige Countess 357

—INDIVIDUAL EPDs—

BW: -1.4 WW: 55 YW: 99 Milk: 25

Mytty In Focus is simply a cowman's bull. He was number one for registrations in the Angus breed in 2008, 2009, and 2010. In Focus is a bull that we have turned to to get calving ease in a consistent package. In Focus works for us, so let his sons go to work for you.



PUREBRED POLLED BLACK BULL

## C HYEK BLACK IMPACT 3960N

AMGV844875 ★ Calved: February 7, 2003 ★ Tattoo: 3960N

HYEK BLACK IMPULSE 1296L ELK CK Scorpion 2343H ET  
OAKK Valley Lady 296J

HYEK BLACK RUBY 9604J FHG Flying H Extra 150D  
HYEK Dottie F6048

—INDIVIDUAL EPDs—

CE: 106 BW: -1 WW: 41 YW: 68 Milk: 15 TMAT: 36 Gest: -5.9 CED: 98

HYEK Black Impact is a bull that we turned to to make females and add power to our herd, and he most certainly has done that. He makes them functional and we will use him for years to come because of that fact.



**Lot 1** **TAU MR. GUNNISON 8Y**

★ Calved: January 22, 2011 ★ Tattoo: TAU 8Y ★ Reg. #: AMGV1183797

**Birth Weight: 70** **Adj. 205-day Wt: 735**

VRT Rup Lazy TV Hotfudge J357

**GMCC RUPPLE GUNNISON N31**  
RUP Ruppel 919L

BABR Tsunami 447P

**TAU MS TSUNAMI 9173W**  
TAU Krugerrand 563R

GeneSTAR <sup>®</sup> MVP	
Feed Efficiency	-0.64
Marbling	0.01
Tenderness	0.69

CE	BW	WW	YW	Milk	TM	GL	CED	SC
110	-0.1	39	72	19	39	-1.1	101.3	0.0

8Y-Homozygous Black, Double Polled 88% purebred out of Ruppel Gunnison here is another calving ease sire. He had a 70 pound birth weight and shows a 110 for calving ease. 8Y is super smooth shouldered and clean about his front, while being level topped and bold in his rib.

**Lot 1**

88% PUREBRED POLLED BLACK BULL

**Lot 2** **TAU MR WILD BILL 9Y**

★ Calved: January 22, 2011 ★ Tattoo: TAU 9Y ★ Reg. #: AMGV1183864

**Birth Weight: 80** **Adj. 205-day Wt: 738**

ELK CK Crazy Horse 138P

**ELK CK WILD BILL 42U**  
JOB Danell Greta 42L ET

TAU Gunnison 106R

**TAU MS GUNNISON 106R 8163U**  
TAU Miss Gold Robber 154L

GeneSTAR <sup>®</sup> MVP	
Feed Efficiency	
Marbling	
Tenderness	

CE	BW	WW	YW	Milk	TM	GL	CED	SC
105	1.4	44	83	18	40	-0.6	99.6	0.3

9Y-Large Framed, long spined son of our herd sire Wild Bill. 9Y has good growth with a moderate birth weight. The Wild Bill sons will add length and frame to your calves.

94% PUREBRED POLLED BLACK BULL

**Lot 3** **TAU MR FREEDOM 11Y**

★ Calved: January 22, 2011 ★ Tattoo: TAU 11Y ★ Reg. #: AMGV1183867

**Birth Weight: 79** **Adj. 205-day Wt: 738**

VAA Leachman New Day 205B

**SLC FREEDOM 178F ET**  
BB Miss 61Y

BABR Tsunami 447P

**TAU MS TSUNAMI 9119W**  
TAU Tau Freedom 439P

GeneSTAR <sup>®</sup> MVP	
Feed Efficiency	-1.47
Marbling	0.15
Tenderness	0.11

CE	BW	WW	YW	Milk	TM	GL	CED	SC
105	1.6	42	82	13	34	-3.6	100.0	0.3

11Y-Black, Double Polled son of SLC Freedom of 178F ET and a Tsunami heifer. 11Y is a very well balanced Gelbvieh bull. He is extended about his front, deep bodied and square hiped. He maintains this balance at the ground as he is sound structured and long striding.

**Lot 4** **TAU MR GUNNISON 14Y**

★ Calved: January 24, 2011 ★ Tattoo: TAU 14Y ★ Reg. #: AMGV1183872

**Birth Weight: 72** **Adj. 205-day Wt: 659**

VRT Rup Lazy TV Hotfudge J357

**GMCC RUPPLE GUNNISON N31**  
RUP Ruppel 919L

Mytty In Focus

**TAU MS IN FOCUS 911W**  
TAU Ms Freedom 718T

GeneSTAR <sup>®</sup> MVP	
Feed Efficiency	0.37
Marbling	-0.16
Tenderness	0.34

CE	BW	WW	YW	Milk	TM	GL	CED	SC
111	-0.9	35	69	19	37	-1.7	102.4	0.1

14Y-Calving Ease deluxe son of Ruppel Gunnison and a MYTTY In Focus first calf heifer. He had an actual birth weight of 72 pounds and he is backed by a calving ease of 111.

75% PUREBRED POLLED HOMOZYGOUS BLACK BULL

**Lot 5** **TAU MR WILD BILL 15Y**

★ Calved: January 25, 2011 ★ Tattoo: TAU 15Y ★ Reg. #: AMGV1183873

**Birth Weight: 78** **Adj. 205-day Wt: 674**

ELK CK Crazy Horse 138P

**ELK CK WILD BILL 42U**  
JOB Danell Greta 42L ET

TAU Krugerrand 70M

**TAU MS KRUGERRAND 70M 8139U**  
TAU Power Pac 486P

GeneSTAR <sup>®</sup> MVP	
Feed Efficiency	-1.39
Marbling	-0.10
Tenderness	0.04

CE	BW	WW	YW	Milk	TM	GL	CED	SC
107	0.3	41	83	15	36	-1.3	101.9	0.2

15Y-Out of our herd sire Wild Bill and a Krugerrand cow, 15Y is a growthy bull that is packed with muscle, width, and substance.

75% PUREBRED POLLED BLACK BULL

**Lot 6** **TAU MR FREEDOM 16Y**

★ Calved: January 25, 2011 ★ Tattoo: TAU 16Y ★ Reg. #: AMGV1196770

**Birth Weight: 68** **Adj. 205-day Wt: 684**

VAA Leachman New Day 205B

**SLC FREEDOM 178F ET**  
BB Miss 61Y

GMCC Ruppel Gunnison N31

**TAU MS GUNNISON 9157W**  
TAU Miss T510 2T22 737T

GeneSTAR <sup>®</sup> MVP	
Feed Efficiency	-1.30
Marbling	0.04
Tenderness	-0.03

CE	BW	WW	YW	Milk	TM	GL	CED	SC
110	-1.3	34	80	14	31	-2.8	102.6	0.2

16Y-Powerful son of SLC Freedom and out of a Gunnison daughter. Here is a heifer bull deluxe that hit the ground at 68 pounds.

**Lot 3**

75% PUREBRED POLLED HOMOZYGOUS BLACK BULL

**Lot 7** | **TAU MR WILD BILL 20Y**

★ Calved: January 26, 2011 ★ Tattoo: TAU 20Y ★ Reg. #: AMGV1183884

**Birth Weight: 76 Adj. 205-day Wt: 788**

ELK CK Crazy Horse 138P  
**ELK CK WILD BILL 42U**  
 JOB Danell Greta 42L ET

BT Crossover 758N  
**TAU MR CROSSOVER 863U**  
 TAU Miss Bennets Bonus 230M

GeneSTAR <sup>®</sup> MVP	
Feed Efficiency	-1.16
Marbling	0.15
Tenderness	0.01

CE	BW	WW	YW	Milk	TM	GL	CED	SC
110	0.1	47	90	17	41	-1.1	104.0	0.5

20Y- Homozygous Black, Double Polled ¾ blood. The combination of our herd sire Wild Bill and a Crossover cow gave us a very high performing and growth bull. 20Y is long spined and powerfully constructed and his growth traits follow his type and kind as he weaned off at 788 pounds while showing a 47 for weaning and a 90 for yearling weight.



Lot 7

75% PUREBRED POLLED BLACK BULL

**Lot 8** | **TAU MR GUNNISON 31Y**

★ Calved: January 28, 2011 ★ Tattoo: TAU 31Y ★ Reg. #: AMGV1183980

**Birth Weight: 78 Adj. 205-day Wt: 671**

VRT Rup Lazy TV Hotfudge J357  
**GMCC RUPPLE GUNNISON N31**  
 RUP Ruppel 919L

PIE PIE Advance 6132  
**TAU MS ADVANCE 9189W**  
 TAU Miss Freedom 307N

GeneSTAR <sup>®</sup> MVP	
Feed Efficiency	-1.08
Marbling	0.08
Tenderness	0.41

CE	BW	WW	YW	Milk	TM	GL	CED	SC
108	0.8	36	69	17	35	-0.7	100.9	0.0

31Y-Son of Ruppel Gunnison and out of a red first calf heifer. 31Y shows a 78 lb. actual birth weight and a 108 for calving ease.

75% PUREBRED POLLED BLACK BULL

**Lot 9** | **TAU MR WILD BILL 35Y**

★ Calved: January 29, 2011 ★ Tattoo: TAU 35Y ★ Reg. #: AMGV1184040

**Birth Weight: 89 Adj. 205-day Wt: 731**

ELK CK Crazy Horse 138P  
**ELK CK WILD BILL 42U**  
 JOB Danell Greta 42L ET

S S Traveler 6807 T510  
**TAU MS TRAVELER 6807 431P**  
 TAU Ms Freedom 216M

GeneSTAR <sup>®</sup> MVP	
Feed Efficiency	-0.84
Marbling	0.15
Tenderness	0.57

CE	BW	WW	YW	Milk	TM	GL	CED	SC
108	0.4	43	90	15	37	-1.1	101.7	0.1

35Y-Here is a son of our herd bull Wild Bill and out of a T510 daughter. Tons of growth in this pedigree as he is a 43 for weaning and a 90 for his yearling weight EPD's.

75% PUREBRED POLLED HOMOZYGOUS BLACK BULL

**Lot 10** | **TAU MR BLACK IMPACT 40Y**

★ Calved: January 30, 2011 ★ Tattoo: TAU 40Y ★ Reg. #: AMGV1184059

**Birth Weight: 78 Adj. 205-day Wt: 709**

HYEK Black Impulse 1296L  
**HYEK BLACK IMPACT 3960N**  
 HYEK Black Ruby 9604J

TC Gridiron 258  
**TAU MISS GRIDIRON 9115W**  
 TAU Miss Rodeo Drive 2147M

GeneSTAR <sup>®</sup> MVP	
Feed Efficiency	0.71
Marbling	0.14
Tenderness	0.53

CE	BW	WW	YW	Milk	TM	GL	CED	SC
105	0.9	43	84	16	38	-2.5	99.5	-0.2

40Y-Homozygous Black, Double Polled son of HYEK Black Impact and a first calf heifer by TC Gridiron. Check the balance on this guy. Clean fronted, level topped, deep bodied and soggy middled. Find him on sale day.



Lot 10

75% PUREBRED POLLED BLACK BULL

**Lot 11** | **TAU MR BLACK IMPACT 66Y**

★ Calved: February 4, 2011 ★ Tattoo: TAU 66Y ★ Reg. #: AMGV1184117

**Birth Weight: 85 Adj. 205-day Wt: 623**

HYEK Black Impulse 1296L  
**HYEK BLACK IMPACT 3960N**  
 HYEK Black Ruby 9604J

TC Grid Topper 355  
**TAU MS GRID TOPPER 9165W**  
 TAU Miss Rodeo Drive 267M

GeneSTAR <sup>®</sup> MVP	
Feed Efficiency	
Marbling	
Tenderness	

CE	BW	WW	YW	Milk	TM	GL	CED	SC
106	0.7	40	82	14	34	-2.9	99.8	-0.2

66Y-Here is a powerful son of HYEK Black Impact and a first calf Grid Topper heifer. Tons of rib and body depth with plenty of foot and substance.

75% PUREBRED POLLED BLACK BULL

**Lot 12** | **TAU MR GUNNISON 70Y**

★ Calved: February 5, 2011 ★ Tattoo: TAU 70Y ★ Reg. #: AMGV1184122

**Birth Weight: 80 Adj. 205-day Wt: 698**

VRT Rup Lazy TV Hotfudge J357  
**GMCC RUPPLE GUNNISON N31**  
 RUP Ruppel 919L

HXC LCC Gravity B252L  
**TAU MISS GRAVITY 9116W**  
 TAU Power Pac 9070 487P

GeneSTAR <sup>®</sup> MVP	
Feed Efficiency	-0.29
Marbling	0.05
Tenderness	0.15

CE	BW	WW	YW	Milk	TM	GL	CED	SC
107	0.3	37	68	17	36	-0.4	101.0	0.2

70Y- ¾ blood son of Ruppel Gunnison and a first calf Gravity daughter. 70Y hit the ground with a 80 lb birth weight. Combined with his 107 calving ease EPD, 70Y should be safe to use on heifers.

PUREBRED GELBVIEH

**Lot 13** **TAU MR GUNNISON 48Y**

★ Calved: January 31, 2011 ★ Tattoo: TAU 48Y ★ Reg. #: AMGV1184079

**Birth Weight: 76** **Adj. 205-day Wt: 716**

VRT Rup Lazy TV Hotfudge J357

**GMCC RUPPLE GUNNISON N31**  
RUP Ruppel 919L

SLC Freedom 178F ET

**TAU MS FREEDOM 925W**

TAU Miss On Target 740T

GeneSTAR <sup>®</sup> MVP	
Feed Efficiency	-0.46
Marbling	0.00
Tenderness	-0.04

CE	BW	WW	YW	Milk	TM	GL	CED	SC
110	.1	37	72	17	36	-1.4	101.8	0.0

48Y-Homozygous Black, Double Polled 88% purebred. 48Y is out of a first calf Freedom heifer and Ruppel Gunnison. Plenty of muscle, thickness and bone with a possible chance at calving ease.

**Lot 13****Lot 14** **TAU MR BLACK IMPRESSION 72Y**

★ Calved: February 5, 2011 ★ Tattoo: TAU 72Y ★ Reg. #: AMGV1184183

**Birth Weight: 86** **Adj. 205-day Wt: 642**

HYEK Black Impulse 1296L

**HYEK BLACK IMPACT 3960N**

HYEK Black Ruby 9604J

TAU TG Ty 313L

**TAU TAU TY 433P**

TAU Ms Triple Threat 636F

GeneSTAR <sup>®</sup> MVP	
Feed Efficiency	-1.58
Marbling	-0.03
Tenderness	0.77

CE	BW	WW	YW	Milk	TM	GL	CED	SC
106	.1	37	71	11	30	-3.7	99.3	-.4

72Y-A 75% Gelbvieh son of Impact and out of a Ty daughter. 75Y is stout featured and powerfully constructed as he is expressively muscled and wide based.

**Lot 15** **TAU MR GUNNISON 106R 230U 73Y**

★ Calved: February 5, 2011 ★ Tattoo: TAU 73Y ★ Reg. #: AMGV1184186

**Birth Weight: 87** **Adj. 205-day Wt: 656**

TAU Gunnison 106R

**TAU MR GUNNISON 106R 230U**

TAU Miss Power Pac 13F 333N

TC Grid Topper 355

**TAU MISS GRID TOPPER 8120U**

TAU Miss Rodeo 3212N

GeneSTAR <sup>®</sup> MVP	
Feed Efficiency	0.22
Marbling	0.07
Tenderness	0.29

CE	BW	WW	YW	Milk	TM	GL	CED	SC
105	1.3	39	75	12	32	-.3	100.1	.3

73Y-Son of our Gunnison clean up bull and a Grid Topper daughter that the kids showed. He carries the style and look of his mom in a powerful package.

**Lot 16** **TAU MR WILD BILL 97Y**

★ Calved: February 9, 2011 ★ Tattoo: TAU 97Y ★ Reg. #: AMGV1184218

**Birth Weight: 85** **Adj. 205-day Wt: 758**

ELK CK Crazy Horse 138P

**ELK CK WILD BILL 42U**

JOB Danell Greta 42L ET

GMCC Ruppel Gunnison N31

**TAU MS GUNNISON N31 821U**

TAU Ms Tsunami 608S

GeneSTAR <sup>®</sup> MVP	
Feed Efficiency	-0.31
Marbling	-0.08
Tenderness	0.06

CE	BW	WW	YW	Milk	TM	GL	CED	SC
107	1.0	41	79	18	39	-1.0	102.1	.1

97Y-Here is a Wild Bill son that is out of another Gunnison female. Plenty of growth and maternal ability in this package as he weaned off at 758 pounds.

**Lot 17** **TAU MR BLACK IMPACT 98Y**

★ Calved: February 9, 2011 ★ Tattoo: TAU 98Y ★ Reg. #: AMGV1184221

**Birth Weight: 92** **Adj. 205-day Wt: 773**

HYEK Black Impulse 1296L

**HYEK BLACK IMPACT 3960N**

HYEK Black Ruby 9604J

BABR Tsunami 447P

**TAU MISS TSUNAMI 759T**

TAU Ms Lead On 463P

GeneSTAR <sup>®</sup> MVP	
Feed Efficiency	-0.79
Marbling	-0.46
Tenderness	0.50

CE	BW	WW	YW	Milk	TM	GL	CED	SC
106	.9	46	86	19	42	-3.6	99.3	-.2

98Y-88% Purebred son of Impact and out of a good Tsunami female. 98Y tipped the scales at 773 pounds at weaning.

**Lot 18** **TAU MR WILD BILL 203Y**

★ Calved: February 10, 2011 ★ Tattoo: TAU 203Y ★ Reg. #: AMGV1184257

**Birth Weight: 84** **Adj. 205-day Wt: 785**

ELK CK Crazy Horse 138P

**ELK CK WILD BILL 42U**

JOB Danell Greta 42L ET

SS Traveler T510 2T22

**TAU MS TRAVELER 2T22 805U**

TAU Ms Sleepy 6125S

GeneSTAR <sup>®</sup> MVP	
Feed Efficiency	0.14
Marbling	-0.10
Tenderness	0.32

CE	BW	WW	YW	Milk	TM	GL	CED	SC
107	.2	46	92	16	39	-1.4	102	.2

203Y-Another large framed, long spine ¾ blood son of Wild Bill that will add pounds to any calf crop with a 785 lb. weaning weight. 203Y comes from a very good 2<sup>nd</sup> calf heifer.

**Lot 19** **TAU GUNNISON 106R-230U 208Y**

★ Calved: February 11, 2011 ★ Tattoo: TAU 208Y ★ Reg. #: AMGV1184262

**Birth Weight: 88** **Adj. 205-day Wt: 704**

TAU Gunnison 106R

**TAU MR GUNNISON 106R 230U**

TAU Miss Power Pac 13F 333N

TAU Mr Sleepy 204P

**TAU MISS SLEEPY 7111T**

TAU Ms Traveler 6807 512E

GeneSTAR <sup>®</sup> MVP	
Feed Efficiency	-0.44
Marbling	-0.03
Tenderness	0.33

CE	BW	WW	YW	Milk	TM	GL	CED	SC
104	2.0	44	74	15	37	-.9	99.6	.1

208Y-Larger framed, longer spined son of 230U and a red show heifer. 208Y is heavy muscled and stylish.

88% PUREBRED POLLED HOMOZYGOUS BLACK BULL

**Lot 20** | **TAU MR PR GRANITE 65Y**

★ Calved: February 3, 2011 ★ Tattoo: TAU 65Y ★ Reg. #: AMGV1184114

**Birth Weight: 90 Adj. 205-day Wt: 758**

BTI Granite 2135M  
**DCSF POST ROCK GRANITE 200P2**  
 DCSF Post Rock Twila 223M2

TJB Sleepy 161F ET  
**TAU 3198N**  
 SHA Miss Savvy 118K

<b>GeneSTAR MVP</b>	
Feed Efficiency	-1.62
Marbling	-0.36
Tenderness	0.14

CE	BW	WW	YW	Milk	TM	GL	CED	SC
105	1.0	44	78	17	39	-3.6	101.6	-.5

65Y-Black, Double Polled 88% Purebred out of Post Rock Granite 200P2. This stylish purebred is long and level topped, deep and bold in his rib shape and maintains this at the ground as he is very flexible in his movement. 65Y has herd bull written all over him.



**Lot 20**

75% PUREBRED POLLED BLACK BULL

**Lot 21** | **TAU GUNNISON 106R 230U 216Y**

★ Calved: February 12, 2011 ★ Tattoo: TAU 216Y ★ Reg. #: AMGV1184278

**Birth Weight: 84 Adj. 205-day Wt: 742**

TAU Gunnison 106R  
**TAU MR GUNNISON 106R 230U**  
 TAU Miss Power Pac 13F 333N

TC Freedom 104  
**TAU MISS TC FREEDOM 899U**  
 TAU Miss Big Sky 329N

<b>GeneSTAR MVP</b>	
Feed Efficiency	0.03
Marbling	0.31
Tenderness	-0.08

CE	BW	WW	YW	Milk	TM	GL	CED	SC
107	.9	43	80	17	39	-1.7	100	.5

216Y-Stout featured son of our clean up bull 230U. He is out of a larger framed TC Freedom daughter. Plenty of growth backed by a 724 pound weaning weight.

88% PUREBRED POLLED HOMOZYGOUS BLACK BULL

**Lot 22** | **TAU MR GUNNISON 106R 224Y**

★ Calved: February 13, 2011 ★ Tattoo: TAU 224Y ★ Reg. #: AMGV1184283

**Birth Weight: 85 Adj. 205-day Wt: 747**

GMCC Ruppel Gunnison N31  
**TAU GUNNISON 106R**  
 TAU Miss Rodeo Drive 220M

BABR Tsunami 447P  
**TAU MISS TSUNAMI 766T**  
 TAU Tau Bushwacker 440P

<b>GeneSTAR MVP</b>	
Feed Efficiency	-1.66
Marbling	-0.19
Tenderness	0.60

CE	BW	WW	YW	Milk	TM	GL	CED	SC
107	1.0	42	75	18	39	-1.2	98.3	.3

224Y-Stout and powerful son of Gunnison 106R. 224Y is thick and heavy muscled while possessing plenty of bone and foot size. 766T is one of the better Tsunami females in our herd. Good milk EPD of 18.

75% PUREBRED POLLED BLACK BULL

**Lot 23** | **TAU MR HOT FUDGE 232Y**

★ Calved: February 15, 2011 ★ Tattoo: TAU 232Y ★ Reg. #: AMGV1184300

**Birth Weight: 88 Adj. 205-day Wt: 758**

WAC Fullback 011G  
**VRT RUP LAZY TV HOTFUDGE J357**  
 VRT F091

BCC Bushwacker 41-93  
**TAU MISS BUSHWACKER 311N**  
 TAU Ms Zorro 709G

<b>GeneSTAR MVP</b>	
Feed Efficiency	
Marbling	
Tenderness	

CE	BW	WW	YW	Milk	TM	GL	CED	SC
109	1.5	48	90	20	44	.2	103.9	.4

232Y-Some of the best replacement females we have had have been Hot Fudge females. Don't miss 232Y for his maternal quality and overall performance.

75% PUREBRED POLLED HOMOZYGOUS BLACK BULL

**Lot 24** | **TAU MR BLACK IMPACT 236Y**

★ Calved: February 15, 2011 ★ Tattoo: TAU 236Y ★ Reg. #: AMGV1184302

**Birth Weight: 90 Adj. 205-day Wt: 820**

HYEK Black Impulse 1296L  
**HYEK BLACK IMPACT 3960N**  
 HYEK Black Ruby 9604J

SS Traveler 6807 T510  
**TAU MS TRAVELER 6807 4103P**  
 TAU Miss Rodeo Drive 261M

<b>GeneSTAR MVP</b>	
Feed Efficiency	0.89
Marbling	0.33
Tenderness	0.41

CE	BW	WW	YW	Milk	TM	GL	CED	SC
105	1.3	51	94	18	44	-2.6	98.1	-.1

236Y- Moderate framed, heavy muscled son of Impact with a huge 820 lb. weaning weight. 236Y comes from a very good T510 female. Muscle and power in a high performing package, don't miss 236Y.

94% PUREBRED POLLED BLACK BULL

**Lot 25** | **TAU MR BLACK IMPACT 238Y**

★ Calved: February 15, 2011 ★ Tattoo: TAU 238Y ★ Reg. #: AMGV1184307

**Birth Weight: 90 Adj. 205-day Wt: 804**

HYEK Black Impulse 1296L  
**HYEK BLACK IMPACT 3960N**  
 HYEK Black Ruby 9604J

JNS Mr Image 6E ET  
**TAU MISS BLAC IMAGE 144L**  
 TAU Ms Blacksmith 6107F

<b>GeneSTAR MVP</b>	
Feed Efficiency	-1.42
Marbling	+1.14
Tenderness	1.09

CE	BW	WW	YW	Milk	TM	GL	CED	SC
105	1.9	47	79	14	38	-2.7	98.8	-.1

238Y- Stout and powerful son of Hyeck Black Impact. He is Homozygous Black, heavy muscled and wide based. He should make a heck of a herd bull.



**Lot 25**

**Lot 26** | **TAU MR GUNNISON 106R 260Y**

★ Calved: February 19, 2011 ★ Tattoo: TAU 260Y ★ Reg. #: AMGV1185211

**Birth Weight: 82**      **Adj. 205-day Wt: 683**GMCC Ruppel Gunnison N31  
**TAU GUNNISON 106R**  
TAU Miss Rodeo Drive 220MBABR Tsunami 447P  
**TAU MS TSUNAMI 7243T**  
TAU Ms New Design 878 255

GeneSTAR <sup>®</sup> MVP	
Feed Efficiency	-0.86
Marbling	0.10
Tenderness	0.63

CE	BW	WW	YW	Milk	TM	GL	CED	SC
109	-.4	35	67	18	36	-.9	99.4	.3

260Y: ¾ son of Gunnison 106. 260Y is thick and powerful in a moderate framed package. Stout topped and wide based with plenty of expression.

75% PUREBRED POLLED BLACK BULL

**Lot 27** | **TAU GUNNISON 106R 230U 266Y**

★ Calved: February 20, 2011 ★ Tattoo: TAU 266Y ★ Reg. #: AMGV1185333

**Birth Weight: 88**      **Adj. 205-day Wt: 712**TAU Gunnison 106R  
**TAU MR GUNNISON 106R 230U**  
TAU Miss Power Pac 13F 333NWF Beckton Lancer F442 T  
**TAU MS LANCER 883U**  
TAU Ms Lm 099K

GeneSTAR <sup>®</sup> MVP	
Feed Efficiency	
Marbling	
Tenderness	

CE	BW	WW	YW	Milk	TM	GL	CED	SC
105	1.5	43	75	11	33	-.2	99.7	.3

266Y-Out of 230U and a red Beckton Lancer daughter. 266Y is wide topped and expressively muscled.

94% PUREBRED POLLED HOMOZYGOUS BLACK BULL

**Lot 28** | **TAU MR BLACK SENSATION 271Y ET**

★ Calved: February 21, 2011 ★ Tattoo: TAU 271Y ★ Reg. #: AMGV1185348

**Birth Weight: 88**      **Adj. 205-day Wt: 879**HYEK Black Impulse 1296L  
**HYEK BLACK IMPACT 3960N**  
HYEK Black Ruby 9604JTJB Sleepy 161F ET  
**TAU MS SLEEPY 920J**  
TAU Ms Dr P Of 516E 716G

CE	BW	WW	YW	Milk	TM	GL	CED	SC			
105	1.8	45	79	17	40	-3.0	99.4	-.4			
RFI	ADG	Tend	Marb	% Ch	YG	Fat	RE	HP	Stay	CEM	Doc
5	4	4	5	5	6	5	4	5	6	5	5

271Y-Homozygous Black, Double Polled Purebred out of our donor cow 920J and HYEK Black Impact. 271Y is the Front Pasture Kind. He is super good balanced as he is extended about his front, long and level about his spine, while being packed with muscle and thickness. He is our entry in the Purebred Futurity in Denver.

**Lot 28****Lot 29** | **TAU MR BILLY 277Y**

★ Calved: February 21, 2011 ★ Tattoo: TAU 277Y ★ Reg. #: AMGV1185353

**Birth Weight: 87**      **Adj. 205-day Wt: 746**ELK CK Crazy Horse 138P  
**ELK CK WILD BILL 42U**  
JOB Danell Greta 42L ETSLC Freedom 178F ET  
**TAU MS FREEDOM 811U**  
TAU Ms Ambush 6131S

GeneSTAR <sup>®</sup> MVP	
Feed Efficiency	
Marbling	
Tenderness	

CE	BW	WW	YW	Milk	TM	GL	CED	SC
106	1.3	47	93	14	38	-1.9	102	.3

277Y- This bull is out of our herdsire Wild Bill and a wonderful red female that the kids showed a couple of years ago. He weaned off at 746 pounds and he has great numbers to back that up. Mark this guy.

75% PUREBRED POLLED BLACK BULL

**Lot 30** | **TAU MR HY-PER ACTIVE ET 344Y**

★ Calved: March 7, 2011 ★ Tattoo: TAU 344Y ★ Reg. #: AMGV1185503

**Birth Weight: 88**      **Adj. 205-day Wt: 771**GMCC Ruppel Gunnison N31  
**TAU MR HY-PER ACTIVE 60W ET**  
TAU Ms Sleepy 920JTC Gridiron 258  
**TAU MS TC GRIDIRON 9270W**  
TAU Gunnison 557R

GeneSTAR <sup>®</sup> MVP	
Feed Efficiency	
Marbling	
Tenderness	

CE	BW	WW	YW	Milk	TM	GL	CED	SC
107	1.5	43	80	16	38	.1	102.3	.1

344Y-Here is a son of our herdsire 60W. 344Y has all of the pieces to be a breeding piece including a 771 lb. weaning weight.

**Taubenheim Family--**

We just wanted to write and update you on the great cows that we got from you this year!

We started calving on 8/28 and the last calf was born on 9/23 - pretty short calving season!! 6 black calves and one red calf (oops!) but there were 5 bull calves and two heifers. If everything goes well, we hope to keep the heifers as replacements. You raise fine mamas - the cows were calm and easy to handle and the calves got up and nursed right after birth. We have had so many compliments on both the calves and the cows - from the vets at our clinic, to the brand inspectors, to our neighbors!! We have enjoyed ourselves so much and it is largely due to the fine animals that we got from you!!

We now have the cows out on our cornstalks and we will turn our bull out right after Thanksgiving. We are looking forward to seeing what our Seedstock Plus bull will do on these great mamas!!

Take Care and God Bless,  
Marian Yoshimoto  
Colorado

38% POLLED HOMOZYGOUS BLACK BULL

**Lot 31** | **TAU MR FINAL ANSWER 1Y**

★ Calved: January 18, 2011 ★ Tattoo: TAU 1Y ★ Reg. #: AMGV1183845

**Birth Weight: 73 Adj. 205-day Wt: 743**

Sitz Traveler 8180  
**SAV FINAL ANSWER 0035**  
 SAV Emulous 8145

SGRI Honor Roll S232  
**TAU MS HONOR ROLL 962W**  
 TAU Cherokee 555R

<b>GeneSTAR MVP</b>	
Feed Efficiency	-1.08
Marbling	0.15
Tenderness	0.12

CE	BW	WW	YW	Milk	TM	GL	CED	SC
115	-2.1	46	92	18	41	-2.0	104.4	.3

1Y-Homozygous Black, Double Polled son of SAV Final Answer and a first calf Honor Roll heifer. 1Y hit the ground at 73 pounds and he really grew as he weaned off at 743 pounds. Check out the growth EPD's on this guy. Calving ease and growth in a deep bodied, heavy muscled package.



**Lot 31**

63% POLLED BLACK BULL

**Lot 32** | **TAU MR FREEDOM 2Y**

★ Calved: January 18, 2011 ★ Tattoo: TAU 2Y ★ Reg. #: AMGV1183848

**Birth Weight: 68 Adj. 205-day Wt: 740**

VAA Leachman New Day 205B  
**SLC FREEDOM 178F ET**  
 BB Miss 61Y

SAV Final Answer 0035  
**TAU MS FINAL ANSWER 985W**  
 TAU Ms Big N'Rich 7194T ET

<b>GeneSTAR MVP</b>	
Feed Efficiency	
Marbling	
Tenderness	

CE	BW	WW	YW	Milk	TM	GL	CED	SC
113	-1.0	45	91	13	36	-3.1	104.2	.4

2Y-Here is a sure shot calving ease son of SLC Freedom and out of a Final Answer daughter. This black 63% Gelbvieh bull weighed 68 pounds at birth and grew like a weed as he weaned at 740 pounds.

38% POLLED HOMOZYGOUS BLACK BULL

**Lot 33** | **TAU MR FINAL ANSWER 4Y**

★ Calved: January 19, 2011 ★ Tattoo: TAU 4Y ★ Reg. #: AMGV1183849

**Birth Weight: 72 Adj. 205-day Wt: 712**

Sitz Traveler 8180  
**SAV FINAL ANSWER 0035**  
 SAV Emulous 8145

GMCC Ruppel Gunnison N31  
**TAU MS GUNNISON 909W**  
 TAU Miss Tsunami 755T

<b>GeneSTAR MVP</b>	
Feed Efficiency	-1.91
Marbling	-0.01
Tenderness	0.27

CE	BW	WW	YW	Milk	TM	GL	CED	SC
116	-1.9	41	86	20	41	-1.5	104.7	.2

4Y-This is a perfect pairing for calving ease. You get the power of SAV Final Answer and the maternal ability of Ruppel Gunnison. With an actual birth weight of 72 pounds 4Y is a sure shot calving ease sire.

38% POLLED HOMOZYGOUS BLACK BULL

**Lot 34** | **TAU MR FINAL ANSWER 5Y**

★ Calved: January 19, 2011 ★ Tattoo: TAU 5Y ★ Reg. #: AMGV1183850

**Birth Weight: 73 Adj. 205-day Wt: 779**

Sitz Traveler 8180  
**SAV FINAL ANSWER 0035**  
 SAV Emulous 8145

GMCC Ruppel Gunnison N31  
**TAU MS GUNNISON 917W**  
 TAU Miss TC Freedom 7117T

<b>GeneSTAR MVP</b>	
Feed Efficiency	-0.15
Marbling	0.18
Tenderness	-0.42

CE	BW	WW	YW	Milk	TM	GL	CED	SC
117	-2.1	44	89	20	42	-1.7	104.4	NA

5Y-A son of SAV Final Answer with a 73 lb. birth weight and a 773 lb. weaning weight. He maybe should have been in our Denver Pen--he is that good.

38% POLLED HOMOZYGOUS BLACK BULL

**Lot 35** | **TAU MR FINAL ANSWER 6Y**

★ Calved: January 20, 2011 ★ Tattoo: TAU 6Y ★ Reg. #: AMGV1183851

**Birth Weight: 70 Adj. 205-day Wt: 707**

Sitz Traveler 8180  
**SAV FINAL ANSWER 0035**  
 SAV Emulous 8145

XXB Titanium 921N  
**TAU TITANIUM 9138W**  
 TAU Ms Glacier Chateau 4148P

<b>GeneSTAR MVP</b>	
Feed Efficiency	-0.65
Marbling	0.19
Tenderness	-0.01

CE	BW	WW	YW	Milk	TM	GL	CED	SC
115	-2.5	37	85	17	36	-1.3	105.7	.2

6Y-Calving ease son of Final Answer that has good growth and muscle from a very good first calf heifer.

50% POLLED HOMOZYGOUS BLACK BULL

**Lot 36** | **TAU MR FINAL ANSWER 7Y**

★ Calved: January 22, 2011 ★ Tattoo: TAU 7Y ★ Reg. #: AMGV1183852

**Birth Weight: 74 Adj. 205-day Wt: 777**

Sitz Traveler 8180  
**SAV FINAL ANSWER 0035**  
 SAV Emulous 8145

BABR Tsunami 447P  
**TAU MS TSUNAMI 968W**  
 TAU Miss Freedom 300N

<b>GeneSTAR MVP</b>	
Feed Efficiency	-0.78
Marbling	0.15
Tenderness	0.12

CE	BW	WW	YW	Milk	TM	GL	CED	SC
116	-1.4	46	93	19	42	-2.4	105.2	.2

7Y-Calving ease son of Final Answer and out of a first calf Tsunami daughter. 7Y shows a 74 lb. actual birth weight and further complements that with a weaning weight of 777 pounds. Don't miss the numbers that this bull presents as well.

25% POLLED HOMOZYGOUS BLACK BULL

**Lot 37** | **TAU MR IN FOCUS 12Y**

★ Calved: January 24, 2011 ★ Tattoo: TAU 12Y ★ Reg. #: AMGV1183870

**Birth Weight: 68 Adj. 205-day Wt: 653**

SAF Focus of ER  
**MYTTY IN FOCUS**  
 Mytty Countess 906

GMCC Ruppel Gunnison N31  
**TAU MS GUNNISON 920W**

<b>GeneSTAR MVP</b>	
Feed Efficiency	-0.32
Marbling	-0.25
Tenderness	0.17

CE	BW	WW	YW	Milk	TM	GL	CED	SC
NA	-3.0	31	68	20	36	NA	NA	NA

12Y-True calving ease here. 12Y is a son of MYTTY In Focus that is out of a first calf Gunnison female. There is a reason why so many of our first calf heifers are out of Ruppel Gunnison. These females simply get the job done and it is evident here for sure. Check out this guy on sale day.

63% POLLED HOMOZYGOUS BLACK BULL

**Lot 38** **TAU MR GUNNISON 13Y**

★ Calved: January 24, 2011 ★ Tattoo: TAU 13Y ★ Reg. #: AMGV1183975

**Birth Weight: 75** **Adj. 205-day Wt: 725**

VRT Rup Lazy TV Hotfudge J357

**GMCC RUPPLE GUNNISON N31**

RUP Ruppel 919L

TC Gridiron 258

**TAU MS GRIDIRON 914W**

TAU Miss Sleepy 2103M

GeneSTAR MVP	
Feed Efficiency	0.00
Marbling	0.03
Tenderness	0.26

CE	BW	WW	YW	Milk	TM	GL	CED	SC
109	.3	41	79	15	36	-5	101.7	-.1

13Y-A son of Ruppel Gunnison and out of a TC Grid Iron daughter. Justin bought this pair off of last year's sale and he is proud of what the cow produced. 13Y had a 75 pound actual birth weight and he weaned off the cow at 725 lbs. If you want calving ease and good growth, here it is. Mark this one in your catalog.

63% POLLED HOMOZYGOUS BLACK BULL

**Lot 39** **TAU MR POPIN HOT 25Y**

★ Calved: January 26, 2011 ★ Tattoo: TAU 25Y ★ Reg. #: AMGV1183976

**Birth Weight: 85** **Adj. 205-day Wt: 798**

HYEK Black Impulse 1296L

**HYEK BLACK IMPACT 3960N**

HYEK Black Ruby 9604J

Bon View New Design 1407

**TAU MISS ONTARIO 907W**

TAU Miss Freedom 735T

GeneSTAR MVP	
Feed Efficiency	-0.66
Marbling	0.04
Tenderness	0.41

CE	BW	WW	YW	Milk	TM	GL	CED	SC
107	.2	47	91	20	44	-3.9	100.8	-.1

25Y-Homozygous Black, Double Polled son of HYEK Black Impact and a New Design 1407 female that we showed. 25Y is a growth machine. He is packed with muscle and width. There is a reason why he hit the weaning scales at 798 pounds. He is backed by a very consistent genetic profile, mark this guy if you desire a bull that can make an impact in all aspects of a herd.

**Lot 39**

50% POLLED BLACK BULL

**Lot 40** **TAU MR IN FOCUS 26Y**

★ Calved: January 26, 2011 ★ Tattoo: TAU 26Y ★ Reg. #: AMGV1183957

**Birth Weight: 70** **Adj. 205-day Wt: 700**

SAF Focus of ER

**MYTTY IN FOCUS**

Mytty Countess 906

SGRI Honor Roll S232

**TAU HONOR ROLL 9132W**

TAU Power Pac 404M 5140R

GeneSTAR MVP	
Feed Efficiency	-0.37
Marbling	-0.34
Tenderness	-0.37

CE	BW	WW	YW	Milk	TM	GL	CED	SC
113	-2.2	35	75	19	37	-2.2	104.9	.3

26Y-Another MYTTY In Focus son here. 26Y has a 70 lb. birth weight, a 113 for calving ease, and a -2.2 for birth weight. Calving Ease deluxe bull for sure, you can sleep easy on this one.

50% POLLED BLACK BULL

**Lot 41** **TAU MR IN FOCUS 28Y**

★ Calved: January 27, 2011 ★ Tattoo: TAU 28Y ★ Reg. #: AMGV1183961

**Birth Weight: 82** **Adj. 205-day Wt: 769**

SAF Focus of ER

**MYTTY IN FOCUS**

Mytty Countess 906

BABR Tsunami 447P

**TAU MS TSUNAMI 9182W**

TAU Miss Night Hawk 3144N

GeneSTAR MVP	
Feed Efficiency	-1.29
Marbling	-0.34
Tenderness	0.48

CE	BW	WW	YW	Milk	TM	GL	CED	SC
113	-.7	43	85	20	42	-2.2	105.3	.2

28Y- 1/2 blood Balancer son of MYTTY In Focus and a first calf Tsunami heifer. He was born unassisted at 82 pounds and really grew as he weaned off at 768 pounds. Calving ease and growth backed by a fabulous A.I. sire.

63% POLLED BLACK BULL

**Lot 42** **TAU MR IMPRESSIVE 32Y**

★ Calved: January 28, 2011 ★ Tattoo: TAU 32Y ★ Reg. #: AMGV1183982

**Birth Weight: 89** **Adj. 205-day Wt: 705**

HYEK Black Impulse 1296L

**HYEK BLACK IMPACT 3960N**

HYEK Black Ruby 9604J

BC Marathon 7022

**TAU BIGHT LIGHTNING 9105W ET**

TAU Ms Dr P Of 516E 716G

GeneSTAR MVP	
Feed Efficiency	0.15
Marbling	-0.13
Tenderness	0.27

CE	BW	WW	YW	Milk	TM	GL	CED	SC
102	1.8	44	83	16	38	-2.7	95.7	-.2

32Y-Here is a soggy middled son of Impact that goes back to our donor dam 716G on the maternal side. 32Y is a heavy muscled 63% Balancer bull.

38% HOMOZYGOUS BLACK HOMOZYGOUS POLLED BULL

**Lot 43** **TAU FINAL COUNTDOWN 59Y**

★ Calved: February 3, 2011 ★ Tattoo: TAU 59Y ★ Reg. #: AMGV1184103

**Birth Weight: 90** **Adj. 205-day Wt: 789**

Sitz Traveler 8180

**SAV FINAL ANSWER 0035**

SAV Emulous 8145

GMCC Ruppel Gunnison N31

**TAU MS GUNNISON 7211T ET**

TAU Ms Dr P Of 516E 716G

CE	BW	WW	YW	Milk	TM	GL	CED	SC			
115	-.1	48	94	19	43	-.7	103.8	.2			
RFI	ADG	Tend	Marb	% Ch	YG	Fat	RE	HP	Stay	CEM	Doc
5	4	4	5	5	6	5	4	5	6	5	5

59Y- Homozygous Black, Homozygous Polled son of SAV Final Answer. 59Y is a Cattlemen's Dream, he is soft ribbed and soggy middled while offering tons of foot size and bone. And on top of that you have to love the structure he exhibits, super flexible and sound off of both ends, what more could you ask for? 59Y is our Balancer Futurity entry for the Denver Stock Show.

**Lot 43**

BALANCERS

50% POLLED HOMOZYGOUS BLACK BULL

**Lot 44** | **TAU MR BISMARCK 33Y**

★ Calved: January 29, 2011 ★ Tattoo: TAU 33Y ★ Reg. #: AMGV1184088

**Birth Weight: 82**      **Adj. 205-day Wt: 660**

GAR Grid Maker  
**SAV BISMARCK 5682**  
 SAV Abigale 0451

BABR Tsunami 447P  
**TAU MS TSUNAMI 722T**  
 TAU Miss Megan 427D

<b>GeneSTAR MVP</b>	
Feed Efficiency	0.43
Marbling	0.12
Tenderness	0.49

CE	BW	WW	YW	Milk	TM	GL	CED	SC
NA	-1.1	37	77	18	37	NA	NA	NA

33Y- Larger framed, longer spined son of the popular Genex sire SAV Bismarck. 33Y should add growth and pounds to many cowherds.

50% POLLED HOMOZYGOUS BLACK BULL

**Lot 45** | **TAU MR BISMARCK 34Y**

★ Calved: January 29, 2011 ★ Tattoo: TAU 34Y ★ Reg. #: AMGV1184089

**Birth Weight: 78**      **Adj. 205-day Wt: 682**

GAR Grid Maker  
**SAV BISMARCK 5682**  
 SAV Abigale 0451

GMCC Ruppel Gunnison N31  
**TAU MS GUNNISON 547R**  
 TAU Bennetts Bonus 2102M

<b>GeneSTAR MVP</b>	
Feed Efficiency	-0.53
Marbling	0.07
Tenderness	0.57

CE	BW	WW	YW	Milk	TM	GL	CED	SC
NA	-1.7	39	79	20	40	NA	NA	NA

34Y- 1/2 blood son of SAV Bismarck that offers a 78 lb. actual birth weight and is backed by a good Gunnison female. Loads of maternal ability in this guy, anyone need a cow maker?

63% POLLED RED BULL

**Lot 46** | **TAU MR FREEDOM 36Y**

★ Calved: January 29, 2011 ★ Tattoo: TAU 36Y ★ Reg. #: AMGV1184042

**Birth Weight: 75**      **Adj. 205-day Wt: 757**

VAA Leachman New Day 205B  
**SLC FREEDOM 178F ET**  
 BB Miss 61Y

TC Gridiron 258  
**TAU MS GRIDIRON OF 716G 9152W ET**  
 TAU Ms Dr P of 516E 716G

<b>GeneSTAR MVP</b>	
Feed Efficiency	
Marbling	
Tenderness	

CE	BW	WW	YW	Milk	TM	GL	CED	SC
108	.6	45	91	12	35	-2.3	102.5	.2

36Y- Here is a son of the late great SLC Freedom 178F ET and a first calf Grid Iron daughter. He came out of the cow weighing 75 lbs. and he never quit growing as he weaned off at 757 lbs.

63% POLLED BLACK BULL

**Lot 47** | **TAU MR BLACK IMPACT 39Y**

★ Calved: January 30, 2011 ★ Tattoo: TAU 39Y ★ Reg. #: AMGV1184057

**Birth Weight: 80**      **Adj. 205-day Wt: 756**

HYEK Black Impulse 1296L  
**HYEK BLACK IMPACT 3960N**  
 HYEK Black Ruby 9604J

Mytty In Focus  
**TAU MISS IN FOCUS 927W**  
 TAU Ms Grid Topper 7220T

<b>GeneSTAR MVP</b>	
Feed Efficiency	
Marbling	
Tenderness	

CE	BW	WW	YW	Milk	TM	GL	CED	SC
107	.8	50	96	18	43	-3.5	100.9	-.1

39Y- 63% Balancer out of Impact and an In Focus first calf heifer. He hit the ground with an 80 lb. birth weight and skyrocketed to a weaning weight of 756 lbs. This bull is a testament to calving ease and cow power while being backed by a powerful set of EPD's.

38% POLLED HOMOZYGOUS BLACK BULL

**Lot 48** | **TAU MR IN FOCUS 42Y**

★ Calved: January 30, 2011 ★ Tattoo: TAU 42Y ★ Reg. #: AMGV1184065

**Birth Weight: 82**      **Adj. 205-day Wt: 795**

SAF Focus of ER  
**MYTTY IN FOCUS**  
 Mytty Countess 906

GMCC Ruppel Gunnison N31  
**TAU MS GUNNISON 929W**  
 TAU Miss Alliance 6595 797T

<b>GeneSTAR MVP</b>	
Feed Efficiency	0.17
Marbling	-0.35
Tenderness	-0.02

CE	BW	WW	YW	Milk	TM	GL	CED	SC
115	-1.1	45	92	21	44	-2.3	105.7	.3

42Y- Calving ease prospect out of MYTTY In Focus and a first calf Gunnison heifer. Check the birth to weaning spread in the EPD's on this guy. He weaned off at 795 pounds, and should still be a female maker as he is backed by a Gunnison female.

38% POLLED HOMOZYGOUS BLACK BULL

**Lot 49** | **TAU MR IN FOCUS 80Y**

★ Calved: February 6, 2011 ★ Tattoo: TAU 80Y ★ Reg. #: AMGV1184193

**Birth Weight: 82**      **Adj. 205-day Wt: 718**

SAF Focus of ER  
**MYTTY IN FOCUS**  
 Mytty Countess 906

XXB Big N'Rich 911P ET  
**TAU MS BIG N'RICH 980W**  
 TAU Miss Rodeo Drive 2117M

<b>GeneSTAR MVP</b>	
Feed Efficiency	0.11
Marbling	-0.32
Tenderness	0.34

CE	BW	WW	YW	Milk	TM	GL	CED	SC
113	-.8	41	88	15	36	-1.5	105.6	.5

80Y- Homozygous Black, Double Polled son of the Angus bull Mytty In Focus. 80Y is clean fronted and extended about his front while being level made and square hipped. He also has a heck of a birth to weaning spread. 80Y is a functional herd sire prospect that could make a difference in many operations.



Lot 49

50% POLLED HOMOZYGOUS BLACK BULL

**Lot 50** | **TAU MR TAILBACK 43Y**

★ Calved: January 30, 2011 ★ Tattoo: TAU 43Y ★ Reg. #: AMGV1184066

**Birth Weight: 78**      **Adj. 205-day Wt: 692**

SAF Focus of ER  
**MYTTY IN FOCUS**  
 Mytty Countess 906

GMCC Ruppel Gunnison N31  
**TAU MS KAISHA 994W ET**  
 TAU Ms Sleepy 920J

<b>GeneSTAR MVP</b>	
Feed Efficiency	-1.72
Marbling	-0.22
Tenderness	-0.01

CE	BW	WW	YW	Milk	TM	GL	CED	SC
113	-.6	40	82	20	40	-1.7	104.9	.1

43Y- Another calving ease sire backed by In Focus and a first calf Gunnison daughter. 78 pound birth weight and 113 for calving ease. Put this guy to work on your heifers next year.

**Lot 51** **TAU MR GRIDIRON 44Y**

★ Calved: January 30, 2011 ★ Tattoo: TAU 44Y ★ Reg. #: AMGV1184102

**Birth Weight: 86** **Adj. 205-day Wt: 681**TC Gridiron 258  
**TC GRIDIRON 782**  
TC Quality 3161TJB Night Moves 593R ET  
**TAU MS NIGHT MOVES 8197U**  
TAU Ms Gunnison 547R

GeneSTAR MVP	
Feed Efficiency	-0.31
Marbling	0.01
Tenderness	0.38

CE	BW	WW	YW	Milk	TM	GL	CED	SC
NA	.8	48	93	13	37	NA	NA	NA

44Y- Son of our TC Grid Iron bull and a Night Moves daughter. This 38% Balancer bull has a great set of EPD's to make him a desirable pick for a herd sire.

38% POLLED BLACK BULL

**Lot 52** **TAU MR FINAL ANSWER 49Y**

★ Calved: February 1, 2011 ★ Tattoo: TAU 49Y ★ Reg. #: AMGV1184080

**Birth Weight: 86** **Adj. 205-day Wt: 678**Sitz Traveler 8180  
**SAV FINAL ANSWER 0035**  
SAV Emulous 8145TJB Sleepy 161F ET  
**TAU SLEEPY 5234R**  
TAU Ms Alliance 8141H

GeneSTAR MVP	
Feed Efficiency	-1.02
Marbling	-0.07
Tenderness	0.11

CE	BW	WW	YW	Milk	TM	GL	CED	SC
113	-1.1	40	81	18	38	-1.7	104.1	.2

49Y- Justin's bull that is a son of the popular SAV Final Answer and goes back to Sleepy on the maternal side. Here is a larger framed bull that is longer spined and soggy middled. 49Y is also consistent in his genetic profile.

50% POLLED RED BULL — TWIN

**Lot 53** **TAU MR CONQUEST 50Y**

★ Calved: February 1, 2011 ★ Tattoo: TAU 50Y ★ Reg. #: AMGV1184094

**Birth Weight: 75** **Adj. 205-day Wt: 709**WF Beckton Julian GG B571  
**HXC HXC CONQUEST 4405P**  
HXC HXC Ellie May MA638SLC Freedom 178F ET  
**TAU MISS FREEDOM 226M**  
TAU Miss Toby 491D

GeneSTAR MVP	
Feed Efficiency	-0.59
Marbling	0.31
Tenderness	0.55

CE	BW	WW	YW	Milk	TM	GL	CED	SC
105	-2.7	35	76	12	30	-1.8	98.5	.1

50Y- Here is a red bull that is out of the popular Red Angus sire Conquest. 50Y shows a low 75 pound birth weight. Conquest calves sure are a hot commodity and 50Y is no slouch. Twin to a bull.

38% POLLED BLACK BULL

**Lot 54** **TAU MR IN FOCUS 52Y**

★ Calved: February 1, 2011 ★ Tattoo: TAU 52Y ★ Reg. #: AMGV1184081

**Birth Weight: 79** **Adj. 205-day Wt: 758**SAF Focus of ER  
**MYTTY IN FOCUS**  
Mytty Countess 906SGRI Honor Roll S232  
**TAU MS HONOR ROLL 967W**  
TAU Krugerrand 5175R

GeneSTAR MVP	
Feed Efficiency	-1.46
Marbling	0.12
Tenderness	0.17

CE	BW	WW	YW	Milk	TM	GL	CED	SC
113	-.8	43	90	19	41	-2.5	104.8	.3

52Y- In Focus calves are just plain solid cattle and 52Y is no exception. Calving ease and growth. Find him sale day.

**Lot 55** **TAU MR VIRGINIAN 63Y**

★ Calved: February 3, 2011 ★ Tattoo: TAU 63Y ★ Reg. #: AMGV1184112

**Birth Weight: 78** **Adj. 205-day Wt: 661**Connealy Virginian 681  
**SDCC VIRGINIAN 318T**  
Plattemere Queen W 423TAU Gunnison 106R  
**TAU TAU MS GUNNISON 7288T**  
TAU Miss Power Pac 4112P

GeneSTAR MVP	
Feed Efficiency	0.29
Marbling	-0.16
Tenderness	0.14

CE	BW	WW	YW	Milk	TM	GL	CED	SC
NA	.3	42	83	15	36	NA	NA	NA

63Y- Homozygous Black, Double Polled Balancer. 63Y is another SDCC Virginian son that is powerful and loaded with meat. At the same time he is attractive from the profile as he is extended and clean about his front and super soft in his rib shape. 63Y is simply a female maker.



Lot 55

50% POLLED HOMOZYGOUS BLACK BULL — TWIN TO 63Y

**Lot 56** **TAU MR VIRGINIAN 64Y**

★ Calved: February 3, 2011 ★ Tattoo: TAU 64Y ★ Reg. #: AMGV1184113

**Birth Weight: 65** **Adj. 205-day Wt: 670**Connealy Virginian 681  
**SDCC VIRGINIAN 318T**  
Plattemere Queen W 423TAU Gunnison 106R  
**TAU TAU MS GUNNISON 7288T**  
TAU Miss Power Pac 4112P

GeneSTAR MVP	
Feed Efficiency	0.35
Marbling	0.03
Tenderness	-0.14

CE	BW	WW	YW	Milk	TM	GL	CED	SC
NA	.3	42	83	15	36	NA	NA	NA

64Y- Homozygous Black, Double Polled Balancer. 64Y is a twin to 63Y and I could swear they are identical. He is full of muscle and power and he carries this advantage at the ground as he has plenty of substance and foot size. 64Y is a stout made individual.



Lot 56

25% POLLED HOMOZYGOUS BLACK BULL

**Lot 57** | **TAU MR IN FOCUS 60Y**

★ Calved: February 3, 2011 ★ Tattoo: TAU 60Y ★ Reg. #: AMGV1184104

**Birth Weight: 77 Adj. 205-day Wt: 706**

SAF Focus of ER  
**MYTTY IN FOCUS**  
Mytty Countess 906

TC Gridiron 258  
**TAU MS TC GRIDIRON 9219W**  
TAU Miss Dateline 279M

<b>GeneSTAR MVP</b>	
Feed Efficiency	-1.30
Marbling	-0.09
Tenderness	0.93

CE	BW	WW	YW	Milk	TM	GL	CED	SC
112	-1.0	43	91	20	42	-1.8	105.6	.3

60Y- 25% Balancer son of MYTTY In Focus and out of a first calf Grid Iron heifer. 60Y had an actual birth weight of 77 and shows a 112 for calving ease. He also offers a ton of growth and maternal ability in his genetic profile.

50% POLLED HOMOZYGOUS BLACK BULL

**Lot 58** | **TAU MR BLACK IMPACT 62Y**

★ Calved: February 3, 2011 ★ Tattoo: TAU 62Y ★ Reg. #: AMGV1196932

**Birth Weight: 80 Adj. 205-day Wt: 706**

HYEK Black Impulse 1296L  
**HYEK BLACK IMPACT 3960N**  
HYEK Black Ruby 9604J

Bon View New Design 878  
**TAU MS NEW DESIGN 878 303**  
T G M S Pfred 138L of 9128

<b>GeneSTAR MVP</b>	
Feed Efficiency	-0.41
Marbling	0.05
Tenderness	-0.12

CE	BW	WW	YW	Milk	TM	GL	CED	SC
109	-1.4	32	74	20	36	-3.5	99.1	-.2

62Y- Here is an Impact son that goes back to New Design 878 on the maternal side. 62Y is a stylish Balancer that is square made and sound structured.

38% POLLED BLACK BULL

**Lot 59** | **TAU MR IN FOCUS 69Y**

★ Calved: February 5, 2011 ★ Tattoo: TAU 69Y ★ Reg. #: AMGV1184120

**Birth Weight: 80 Adj. 205-day Wt: 752**

SAF Focus of ER  
**MYTTY IN FOCUS**  
Mytty Countess 906

SRGI Honor Roll S232  
**TAU MS HONOR ROLL 9124W**  
TAU Ms New Design 1407 620S

<b>GeneSTAR MVP</b>	
Feed Efficiency	
Marbling	
Tenderness	

CE	BW	WW	YW	Milk	TM	GL	CED	SC
110	-.2	46	94	22	45	-2.2	104.5	.4

69Y- A MYTTY In Focus son out of a first calf Honor Roll daughter. He is a possible calving ease sire that has an actual birth weight of 80 pounds while being a 110 for calving ease. 69Y has growth as well as he had a weaning weight of 752 pounds.

63% POLLED BLACK BULL

**Lot 60** | **TAU MR GUNNISON 75Y**

★ Calved: February 6, 2011 ★ Tattoo: TAU 75Y ★ Reg. #: AMGV1184189

**Birth Weight: 86 Adj. 205-day Wt: 709**

VRT Rup Lazy TV Hotfudge J357  
**GMCC RUPPLE GUNNISON N31**  
RUP Ruppel 919L

BC Marathon 7022  
**TAU MISS WINNEPEG 9111W ET**  
TAU Ms Dr P of 516E 716G

<b>GeneSTAR MVP</b>	
Feed Efficiency	
Marbling	
Tenderness	

CE	BW	WW	YW	Milk	TM	GL	CED	SC
108	1.7	42	76	17	38	.3	100.5	0.0

75Y- Another son of Ruppel Gunnison out of a first calf Marathon heifer that we showed. 75Y possesses plenty of style to go with good growth.

38% POLLED BLACK BULL

**Lot 61** | **TAU MR IN FOCUS 76Y**

★ Calved: February 6, 2011 ★ Tattoo: TAU 76Y ★ Reg. #: AMGV1184190

**Birth Weight: 85 Adj. 205-day Wt: 756**

SAF Focus of ER  
**MYTTY IN FOCUS**  
Mytty Countess 906

SGRI Honor Roll S232  
**TAU MS HONOR ROLL 9222W**  
TAU Ms King Rob 6206S

<b>GeneSTAR MVP</b>	
Feed Efficiency	
Marbling	
Tenderness	

CE	BW	WW	YW	Milk	TM	GL	CED	SC
111	-.4	45	95	21	44	-2.3	103.9	.3

76Y- Son of the popular ABS sire MYTTY In Focus out of a first calf heifer. This bull puts it all together. Check the growth and maternal traits on this guy. Low birth with high weaning and yearling weights, also loads of milk and maternal.

50% POLLED RED BULL

**Lot 62** | **TAU MR CONQUEST 84Y**

★ Calved: February 7, 2011 ★ Tattoo: TAU 84Y

**Birth Weight: 82 Adj. 205-day Wt: 735**

WF Beckton Julian GG B571  
**HXC HXC CONQUEST 4405P**  
HXC HXC Ellie May MA638

SLC Freedom 178F ET  
**TAU MS FREEDOM 0168K OF 246B**  
TAU 2468 Miss Shaker

<b>GeneSTAR MVP</b>	
Feed Efficiency	0.51
Marbling	0.05
Tenderness	0.59

CE	BW	WW	YW	Milk	TM	GL	CED	SC
103	-1.2	35	75	14	33	-.8	101	NA

84Y- Red, Double Polled son of HXC Conquest. 84Y is one of the top red bulls we have produced in years. He is extremely deep and bold in his rib shape while being soft and flexible in his structure. If you are looking for a red bull here he is boys.



Lot 62

50% POLLED BLACK BULL

**Lot 63** | **TAU MR ABERDEEN 87Y**

★ Calved: February 8, 2011 ★ Tattoo: TAU 87Y ★ Reg. #: AMGV1184211

**Birth Weight: 85 Adj. 205-day Wt: 738**

CRA Bextor 872 5205 608  
**TC ABERDEEN 759**  
TC Blackbird 4034

SLC Freedom 178F ET  
**TAU TAU FREEDOM 452P**  
TAU Ms Blacksmith 756G

<b>GeneSTAR MVP</b>	
Feed Efficiency	
Marbling	
Tenderness	

CE	BW	WW	YW	Milk	TM	GL	CED	SC
NA	-.3	42	85	21	42	NA	NA	NA

87Y- Son of the popular A.I. sire TC Aberdeen and a Freedom daughter. This 50% Balancer is a growthy bull that still possesses those maternal traits to make females. 87Y will work in many breeding situations.

**Lot 64** **TAU MR BLACK IMPACT 89Y**

★ Calved: February 8, 2011 ★ Tattoo: TAU 89Y ★ Reg. #: AMGV1196931

**Birth Weight: 92 Adj. 205-day Wt: 790**

HYEK Black Impulse 1296L  
**HYEK BLACK IMPACT 3960N**  
 HYEK Black Ruby 9604J

Bon View New Design 878  
**TAU MS NEW DESIGN 878-308**  
 TGMS Vision 1134 Of 4420

GeneSTAR MVP	
Feed Efficiency	-0.32
Marbling	-0.01
Tenderness	0.41

CE	BW	WW	YW	Milk	TM	GL	CED	SC

89Y- Homozygous Black, Homozygous Polled Balancer out of Impact and a New Design 878 daughter. 89Y is built like a truck. He is wide topped, beefy about his quarter and wide based. 89Y stepped on the scale at weaning weighing 790 pounds. He should produce fast growing progeny that will be successful in many scenarios. 89Y will be traveling to Denver with us.



**Lot 64**

50% POLLED HOMOZYGOUS BLACK BULL

**Lot 65** **TAU MR ABERDEEN 90Y**

★ Calved: February 8, 2011 ★ Tattoo: TAU 90Y ★ Reg. #: AMGV1184213

**Birth Weight: 85 Adj. 205-day Wt: 709**

CRA Bextor 872 5205 608  
**TC ABERDEEN 759**  
 TC Blackbird 4034

GMCC Ruppel Gunnison N31  
**TAU GUNNISON 5151R**  
 TAU Miss Bennets Bonus 230M

GeneSTAR MVP	
Feed Efficiency	-0.43
Marbling	-0.28
Tenderness	0.20

CE	BW	WW	YW	Milk	TM	GL	CED	SC
NA	-.4	42	85	24	45	NA	NA	NA

90Y- Growthy 50% Balancer son of the popular TC Aberdeen. 90Y is backed by a good Gunnison female and he should work in any scenario as he can easily produce productive steers and heifers. Check the genetic profile here. Maternal brother is at work for Jeff Swanson.

38% POLLED BLACK BULL

**Lot 66** **TAU MR GRIDIRON 782 137Y**

★ Calved: January 30, 2011 ★ Tattoo: TAU 137Y ★ Reg. #: AMGV1196757

**Birth Weight: 82 Adj. 205-day Wt: 684**

TC Gridiron 258  
**TC GRIDIRON 782**  
 TC Quality 3161

BABR Tsunami 447P  
**TAU MS TSUNAMI 8157U**  
 TAU Miss Rodeo Drive 270M

GeneSTAR MVP	
Feed Efficiency	
Marbling	
Tenderness	

CE	BW	WW	YW	Milk	TM	GL	CED	SC
NA	.8	34	82	16	33	NA	NA	NA

137Y- Here is a 38% Balancer out of our TC Grid Iron bull and a Tsunami daughter. 137Y offers depth, muscle, and thickness in a moderate package.

**Lot 67** **TAU MR KRUGERRAND 70M 130P 206Y**

★ Calved: February 10, 2011 ★ Tattoo: TAU 206Y ★ Reg. #: AMGV1184261

**Birth Weight: 85 Adj. 205-day Wt: 753**

TAU Krugerrand 70M  
**TAU MR KRUGERRAND 70M 130P**  
 TAU Ms Coco 052KA 437D

XXB Big N'Rich 911P ET  
**TAU MS BIG N'RICH 7158T**  
 TAU Miss Sleepy 2103M

GeneSTAR MVP	
Feed Efficiency	0.45
Marbling	-0.10
Tenderness	-0.19

CE	BW	WW	YW	Milk	TM	GL	CED	SC
109	-.4	44	84	10	32	-.8	102	.1

206Y- Justin's bull that is a son of Krugerrand 130P, this is a powerful dude that is expressively muscled and wide based, to top it all off he is sound as well. He weaned off the cow at 753 pounds.

50% HOMOZYGOUS BLACK HOMOZYGOUS POLLED BULL

**Lot 68** **TAU MR GRANITE 207Y**

★ Calved: February 10, 2011 ★ Tattoo: TAU 207Y ★ Reg. #: AMGV1196936

**Birth Weight: 85 Adj. 205-day Wt: 631**

BTI Granite 2135M  
**DCSF POST ROCK GRANITE 200P2**  
 DCSF Post Rock Twila 223M2

TAU Krugerrand 70M  
**TAU MS KRUGERRAND 10M 4160P**  
 TGA EXT 532E

GeneSTAR MVP	
Feed Efficiency	-0.22
Marbling	0.12
Tenderness	0.15

CE	BW	WW	YW	Milk	TM	GL	CED	SC
108	-.9	33	79	17	33	-3.6	101.7	-.4

207Y- Homozygous Black, Homozygous Polled, 50% Balancer sired by Granite 200P2 and out of a Purebred Angus cow. 207Y is stylish and powerful. He is long and extended while being packed with muscle and thickness.

38% POLLED BLACK BULL

**Lot 69** **TAU MR IN FOCUS 211Y**

★ Calved: February 12, 2011 ★ Tattoo: TAU 211Y ★ Reg. #: AMGV1184269

**Birth Weight: 65 Adj. 205-day Wt: 701**

SAF Focus of ER  
**MYTTY IN FOCUS**  
 Mytty Countess 906

GMCC Ruppel Gunnison N31  
**TAU MS GUNNISON 939W**  
 TAU Miss Krugergrand

GeneSTAR MVP	
Feed Efficiency	0.97
Marbling	-0.11
Tenderness	-0.03

CE	BW	WW	YW	Milk	TM	GL	CED	SC
113	-2.9	36	79	19	37	-2.0	104.9	.3

211Y- Yet another combination of MYTTY In Focus and a Gunnison first calf heifer. This guy hit the ground at 65 pounds and grew to a weaning weight of 701 pounds.

38% POLLED HOMOZYGOUS BLACK BULL

**Lot 70** **TAU MR ABERDEEN 212Y**

★ Calved: February 12, 2011 ★ Tattoo: TAU 212Y ★ Reg. #: AMGV1184268

**Birth Weight: 80 Adj. 205-day Wt: 633**

CRA Bextor 872 5205 608  
**TC ABERDEEN 759**  
 TC Blackbird 4034

TAU T G Ty 313L  
**TAU MISS TY 3130N**  
 TAU Freedom 102L

GeneSTAR MVP	
Feed Efficiency	-0.34
Marbling	0.22
Tenderness	0.32

CE	BW	WW	YW	Milk	TM	GL	CED	SC
NA	-1.4	40	84	16	36	NA	NA	NA

212Y- Here is a TC Aberdeen son out of a Ty female. All indicators say that 212Y would be an easy calving sire. He hit the ground at 80 pounds and shows a -1.4 for birth weight EPD. The Aberdeen calves are a larger framed cattle also.

50% POLLED BLACK BULL

**Lot 71** | **TAU MR FINAL ANSWER 213Y**

★ Calved: February 12, 2011 ★ Tattoo: TAU 213Y ★ Reg. #: AMGV1184270

**Birth Weight: 80**      **Adj. 205-day Wt: 686**Sitz Traveler 8180  
**SAV FINAL ANSWER 0035**  
SAV Emulous 8145TAU Mr Power Pac 13F 404M  
**TAU POWER PAC 404M 585R**  
TAU Miss Blacksmith 1189L

GeneSTAR MVP	
Feed Efficiency	-1.32
Marbling	-0.12
Tenderness	0.09

CE	BW	WW	YW	Milk	TM	GL	CED	SC
114	-.7	42	84	17	38	-.9	104.6	.1

213Y- Son of SAV Final Answer that offers a 80 lb. actual birth weight. 213Y is deep bodied and heavy muscled. He is also supported with a consistent set of EPD's.

38% POLLED HOMOZYGOUS BLACK BULL

**Lot 72** | **TAU MR MARATHON 217Y**

★ Calved: February 12, 2011 ★ Tattoo: TAU 217Y ★ Reg. #: AMGV1184279

**Birth Weight: 90**      **Adj. 205-day Wt: 665**O C C Kirby 633K  
**B C MARATHON 7022**  
Gibbet Hill Mignonne E37TAU Mr Sleepy 204P  
**TAU MS SLEEPY 204P 7129T**  
TAU Ms Blacksmith 8105H

GeneSTAR MVP	
Feed Efficiency	-0.14
Marbling	0.03
Tenderness	0.80

CE	BW	WW	YW	Milk	TM	GL	CED	SC
109	1.0	37	73	13	32	-1.0	101.2	0.0

217Y- 38% Balancer sired by BC Marathon. Stoutness and power is what 217Y offers. Tons of top shape and thickness in this bull.

50% POLLED HOMOZYGOUS BLACK BULL

**Lot 73** | **TAU MR BLACK IMPACT 220Y**

★ Calved: February 13, 2011 ★ Tattoo: TAU 220Y ★ Reg. #: AMGV1196934

**Birth Weight: 78**      **Adj. 205-day Wt: 704**HYEK Black Impulse 1296L  
**HYEK BLACK IMPACT 3960N**  
HYEK Black Ruby 9604JJ D Daigger 901  
**TAU MS DIABER 4116P**  
TAU Ms New Design 878 254

GeneSTAR MVP	
Feed Efficiency	-0.21
Marbling	-0.09
Tenderness	0.26

CE	BW	WW	YW	Milk	TM	GL	CED	SC
108	-1.4	33	78	19	36	-3.6	99.6	-.1

220Y- Powerful son of Impact and out of a JD Daigger daughter. 220Y is deep bodied and soggy middled while being soft and correct in his structure.

50% POLLED HOMOZYGOUS BLACK BULL

**Lot 74** | **TAU MR ABERDEEN 222Y**

★ Calved: February 13, 2011 ★ Tattoo: TAU 222Y ★ Reg. #: AMGV1184282

**Birth Weight: 83**      **Adj. 205-day Wt: 753**CRA Bextor 872 5205 608  
**TC ABERDEEN 759**  
TC Blackbird 4034WAC Fullback 011G  
**TAU MISS FULLBACK 168L**  
TAU Ms Dr Pepper 629F

GeneSTAR MVP	
Feed Efficiency	-0.58
Marbling	-0.16
Tenderness	0.30

CE	BW	WW	YW	Milk	TM	GL	CED	SC
NA	-.5	45	92	21	44	NA	NA	NA

222Y- TC Aberdeen son that is out of a good Fullback female that is square hipped and good uddered at 12 years of age. This bull has longevity and functionality written all over him. 222Y is one of the most impressive Aberdeen bulls in the sale.

25% POLLED HOMOZYGOUS BLACK BULL

**Lot 75** | **TAU CINDERELLA MAN 225Y**

★ Calved: February 13, 2011 ★ Tattoo: TAU 225Y ★

**Birth Weight: 95**      **Adj. 205-day Wt: 680**Naughty Fine  
**EYE CANDY**  
PB GallowayTAU Krugerrand 70M  
**MR KRUGERRAND 70M 4108P**  
Ms Ancher 032K

GeneSTAR MVP	
Feed Efficiency	0.59
Marbling	-0.02
Tenderness	0.31

CE	BW	WW	YW	Milk	TM	GL	CED	SC
NA	2.7	36	66	10	27	.4	NA	NA

225Y- Homozygous Black, Double Polled bull out of Eye Candy. 225Y is Tanner's project. He is actually a Chi-Angus out of a Balancer cow. He is a pretty stylish individual. Long about his front and extended from there back while being sound structured. He has plenty of set and flex to his hock and pastern.



Lot 75

63% POLLED BLACK BULL

**Lot 76** | **TAU MR NAGURSKI 227Y**

★ Calved: February 14, 2011 ★ Tattoo: TAU 227Y ★ Reg. #: AMGV1184291

**Birth Weight: 95**      **Adj. 205-day Wt: 844**Nord Nagurski M142J  
**BAG MR NAGURSKI 96U**  
BAG Miss 45H 110LKraye Ambush JK 433  
**TAU MS AMBUSH 661S**  
TAU Miss U Sound 325C

GeneSTAR MVP	
Feed Efficiency	
Marbling	
Tenderness	

CE	BW	WW	YW	Milk	TM	GL	CED	SC
104	2.7	62	115	14	45	-.9	101	.5

227Y- If you want growth and performance here it is. 227Y is sired by Nagurski 96U and is out of an Ambush cow. He tipped the scales at 844 pounds at weaning. His mother's weaning ratio is 112 on two calves, check the growth traits on this guy as well. Don't miss 227Y on sale day.

**All weaning weights are produced with mama's milk and grass--not put on artificially by creep feed. A true testament to what the cow and calf can do.**

**Lot 77** TAU MR GRID TOPPER 231Y

★ Calved: February 15, 2011 ★ Tattoo: TAU 231Y ★ Reg. #: AMGV1184294

**Birth Weight: 90 Adj. 205-day Wt: 736**GAR Grid Maker  
TC GRID TOPPER 355  
TC Pride 8067GMCC Ruppel Gunnison N31  
TAU MS GUNNISON 8164U  
TAU Ms Traveler T510 634S

GeneSTAR MVP	
Feed Efficiency	0.38
Marbling	0.01
Tenderness	0.50

CE	BW	WW	YW	Milk	TM	GL	CED	SC
109	1.5	49	99	16	41	-3	102.7	0.0

231Y- Black, Double Polled son of TC Grid Topper and a Gunnison daughter. This bull has a great combination of growth and maternal ability. 231Y is highly desirable in his weaning and yearling weight EPD's. This is backed by the fact that his mother is a Gunnison daughter and we have seen the great maternal ability of Gunnison females in our herd and we don't expect anything less for 231Y.



Lot 77

50% POLLED HOMOZYGOUS BLACK BULL

**Lot 78** TAU MR VIRGINIAN 244Y

★ Calved: February 16, 2011 ★ Tattoo: TAU 244Y ★ Reg. #: AMGV1185190

**Birth Weight: 86 Adj. 205-day Wt: 785**Connealy Virginian 681  
SDCC VIRGINIAN 318T  
Plattemere Queen W 423TAU Gunnison 106R  
TAU MS GUNNISON 106R 7155T  
TAU Ms Nite Hawk 4209P

GeneSTAR MVP	
Feed Efficiency	-1.13
Marbling	-0.09
Tenderness	0.32

CE	BW	WW	YW	Milk	TM	GL	CED	SC
NA	.8	45	87	16	39	NA	NA	NA

244Y- Homozygous Black, Double Polled half sib to last year's high seller out of SDCC Virginian. Wow, 244Y may be one of the heaviest muscled Balancers I have ever seen. This guy is wide and expressive down his top and thick and beefy about his quarter. Muscle and width in a moderate package--as good as it gets.



Lot 78

**Lot 79** TAU MR VIRGINIAN 245Y

★ Calved: February 16, 2011 ★ Tattoo: TAU 245Y ★ Reg. #: AMGV1185191

**Birth Weight: 82 Adj. 205-day Wt: 812**Connealy Virginian 681  
SDCC VIRGINIAN 318T  
Plattemere Queen W 423TAU Mr Sleepy 204P  
TAU MS SLEEPY 204P 7263T  
TAU Miss Dee 404D

GeneSTAR MVP	
Feed Efficiency	-0.77
Marbling	0.15
Tenderness	-0.04

CE	BW	WW	YW	Milk	TM	GL	CED	SC
NA	-.2	44	85	15	37	NA	NA	NA

245Y- Here is a son of SDCC Virginian that is just like his daddy. Packed with growth, muscle and power. 245Y weaned with a 812 pound weight.

50% POLLED BLACK BULL

**Lot 80** TAU MR FINAL ANSWER 259Y

★ Calved: February 19, 2011 ★ Tattoo: TAU 259Y ★ Reg. #: AMGV1185210

**Birth Weight: 78 Adj. 205-day Wt: 619**Sitz Traveler 8180  
SAV FINAL ANSWER 0035  
SAV Emulous 8145GKT Boo Boo 155E  
TAU MISS BOO BOO 106L  
TAU Ms 54G 9119J

GeneSTAR MVP	
Feed Efficiency	
Marbling	
Tenderness	

CE	BW	WW	YW	Milk	TM	GL	CED	SC
116	-2.3	32	71	18	34	-1.5	105.8	.2

259Y- Moderate framed son of Final Answer that doesn't disappoint in the muscle department. He is loaded with shape and expression. To top it all off he is a calving ease prospect that has a 78 lb. birth weight.

50% POLLED RED BULL — TWIN

**Lot 81** TAU MR CONQUEST 267Y

★ Calved: February 20, 2011 ★ Tattoo: TAU 267Y ★ Reg. #: AMGV1185334

**Birth Weight: 65 Adj. 205-day Wt: 680**WF Beckton Julian GG B571  
HXC HXC CONQUEST 4405P  
HXC HXC Ellie May MA638KCF Bennett Ideal G182  
TAU MS BENNETT IDEAL 4114P  
TAU Ms Ptez937 846J Of 504E

GeneSTAR MVP	
Feed Efficiency	0.32
Marbling	-0.09
Tenderness	0.21

CE	BW	WW	YW	Milk	TM	GL	CED	SC
105	-2.2	37	76	18	37	-1.1	100.6	.3

267Y- This red Balancer is sired by Conquest and is out of a Bennett Ideal daughter. Good growth and a consistent genetic profile. Mark this red bull.

25% POLLED HOMOZYGOUS BLACK BULL

**Lot 82** TAU MR GRIDIRON 252Y

★ Calved: February 17, 2011 ★ Tattoo: TAU 252Y ★ Reg. #: AMGV1185197

**Birth Weight: 92 Adj. 205-day Wt: 783**TC Gridiron 258  
TC GRIDIRON 782  
TC Quality 3161Bon View New Design 1407  
TAU MS NEW DESIGN 1407 620S  
TAU Ms Power Pac 9070 4119P

GeneSTAR MVP	
Feed Efficiency	-0.82
Marbling	0.04
Tenderness	0.26

CE	BW	WW	YW	Milk	TM	GL	CED	SC
NA	-.3	43	93	22	44	NA	NA	NA

252Y- 25% Balancer out of our TC Grid Iron bull and a 1407 cow. Check the EPD's here, 252Y has every base covered. He also weaned off at a whopping 783 lbs with his mother ratioing 113 for weaning on 3 calves.

50% POLLED HOMOZYGOUS BLACK BULL

**Lot 83** | **TAU MR GRIDIRON 250Y**

★ Calved: February 17, 2011 ★ Tattoo: TAU 250Y ★ Reg. #: AMGV1185195  
**Birth Weight: 83**      **Adj. 205-day Wt: 746**

TC Gridiron 258  
**TC GRIDIRON 782**  
 TC Quality 3161

BABR Tsunami 447P  
**TAU MS TSUNAMI 8217U**  
 TAU Miss Freedom 2121M

<b>GeneSTAR MVP</b>	
Feed Efficiency	-0.70
Marbling	-0.33
Tenderness	0.25

CE	BW	WW	YW	Milk	TM	GL	CED	SC
NA	.1	43	88	16	38	NA	NA	NA

250Y- Homozygous Black, Double Polled Balancer out of our TC Gridiron herdsire and a stout Tsunami female. 250Y is a combination bull. He is clean fronted, high volumed, and stout made while being long striding and sound structured. To top it all off he will be attending the Denver Stock Show with our Balancer pen of three. Mark this guy high in your books, he won't disappoint.



**Lot 83**

50% POLLED BLACK BULL

**Lot 84** | **TAU KRUGERRAND 70M 130P 272Y**

★ Calved: February 21, 2011 ★ Tattoo: TAU 272Y ★ Reg. #: AMGV1185349  
**Birth Weight: 83**      **Adj. 205-day Wt: 690**

TAU Krugerrand 70M  
**TAU MR KRUGERRAND 70M 130P**  
 TAU Ms Coco 052KA 437D

TC Grid Topper 355  
**TAU MS GRID TOPPER 793T**  
 TAU Miss Blacksmith 1189L

<b>GeneSTAR MVP</b>	
Feed Efficiency	
Marbling	
Tenderness	

CE	BW	WW	YW	Milk	TM	GL	CED	SC
109	0.0	43	87	14	36	-4	102.1	NA

272Y- Son of Krugerrand 130P out of a good Grid Topper daughter. 272Y is a powerful bull with loads of growth in his EPD's.

50% POLLED BLACK BULL

**Lot 85** | **TAU MR FINAL ANSWER 273Y**

★ Calved: February 21, 2011 ★ Tattoo: TAU 273Y ★ Reg. #: AMGV1185350  
**Birth Weight: 85**      **Adj. 205-day Wt: 724**

Sitz Traveler 8180  
**SAV FINAL ANSWER 0035**  
 SAV Emulous 8145

BTI Big Sky 2066K ET  
**TAU MISS BIG SKY 422P**  
 TAU Ms Freedom 0162K

<b>GeneSTAR MVP</b>	
Feed Efficiency	
Marbling	
Tenderness	

CE	BW	WW	YW	Milk	TM	GL	CED	SC
115	-1.2	44	90	14	36	-2.3	104.7	.4

273Y- Another son of the popular SAV Final Answer. There is a reason why there are so many Final Answer sons on our sale--he does good for our cowherd and this son should do the same for you. 273Y is a stout and powerful Balancer.

63% POLLED HOMOZYGOUS BLACK BULL

**Lot 86** | **TAU MR NEW DESIGN 12W 274Y**

★ Calved: February 21, 2011 ★ Tattoo: TAU 274Y ★ Reg. #: AMGV1185351  
**Birth Weight: 80**      **Adj. 205-day Wt: 706**

Bon View New Design 1407  
**TAU MR NEW DESIGN 12W**  
 TAU Miss Gunnison 106R 7109T

TAU Mr Sleepy 204P  
**TAU MS SLEEPY 204P 7130T**  
 TAU Ms 801X 516E

<b>GeneSTAR MVP</b>	
Feed Efficiency	0.75
Marbling	-0.13
Tenderness	-0.08

CE	BW	WW	YW	Milk	TM	GL	CED	SC
107	.3	36	74	20	38	-1.1	102.9	0.0

274Y- Here is a son of our herdsire 12W and out of a stylish Sleepy daughter. This 63% Balancer bull is wide based and packed with muscle. Very nice bull.

50% POLLED BLACK BULL

**Lot 87** | **TAU MR FORESIGHT 278Y**

★ Calved: February 21, 2011 ★ Tattoo: TAU 278Y ★ Reg. #: AMGV1196771  
**Birth Weight: 85**      **Adj. 205-day Wt: 664**

Papa Forte 1921  
**WOODHILL FORESIGHT**  
 Bon View Gammer 85

SLC Freedom 178F ET  
**TAU MISS FREEDOM 493P**  
 TAU Ms Blacksmith 9104J

<b>GeneSTAR MVP</b>	
Feed Efficiency	
Marbling	
Tenderness	

CE	BW	WW	YW	Milk	TM	GL	CED	SC
107	.1	33	81	18	34	-9	100.9	.1

278Y- An attractive son of Woodhill Foresight and a black Freedom daughter. Stoutness and power in a long sided package.

50% POLLED BLACK BULL

**Lot 88** | **TAU MR STIMULUS 279Y**

★ Calved: February 21, 2011 ★ Tattoo: TAU 279Y ★ Reg. #: AMGV1196765  
**Birth Weight: 87**      **Adj. 205-day Wt: 754**

HA Power Alliance 1025  
**CONNEALY STIMULUS 8419**  
 Black Creesa Of Conanga 5332

GMCC Ruppel Gunnison N31  
**TAU MS GUNNISON 657S**  
 TAU Miss Bennett Bonus 4120P

<b>GeneSTAR MVP</b>	
Feed Efficiency	
Marbling	
Tenderness	

CE	BW	WW	YW	Milk	TM	GL	CED	SC
NA	-.4	49	88	17	41	NA	NA	NA

279Y- Large framed, long spined son of Connealy Stimulus. If you like loads of growth and performance here it is. 279Y weaned off the cow at 754 pounds and will have a big yearling weight. Don't miss this growth machine on sale day.

63% POLLED HOMOZYGOUS BLACK BULL

**Lot 89** | **TAU GUNNISON 106R 230U 281Y**

★ Calved: February 21, 2011 ★ Tattoo: TAU 281Y ★ Reg. #: AMGV1185356  
**Birth Weight: 90**      **Adj. 205-day Wt: 757**

TAU Gunnison 106R  
**TAU MR GUNNISON 106R 230U**  
 TAU Miss Power Pac 13F 333N

PIE PIE Advance 6132  
**TAU MISS SLEEPY 897U**  
 TAU 3198N

<b>GeneSTAR MVP</b>	
Feed Efficiency	-1.06
Marbling	-0.23
Tenderness	-0.03

CE	BW	WW	YW	Milk	TM	GL	CED	SC
104	2.4	47	83	13	37	-.6	99.4	.2

281Y- Sired by our herd bull 230U, here is a calf that should offer plenty of growth to your bottom line as he weaned off at 757 pounds.

50% POLLED HOMOZYGOUS BLACK BULL

**Lot 90** **TAU MR GRID TOPPER 43T 291Y**

★ Calved: February 23, 2011 ★ Tattoo: TAU 291Y ★ Reg. #: AMGV1185378

**Birth Weight: 80** **Adj. 205-day Wt: 808**TC Grid Topper 355  
**TAU MR GRID TOPPER 43T**  
TAU Miss Ty 3130NEXAR Lutton 1831  
**TAU MISS LUTTON 1831 785T**  
TAU Miss Power Pac 2136M

GeneSTAR <sup>®</sup> MVP	
Feed Efficiency	0.42
Marbling	0.13
Tenderness	-0.50

CE	BW	WW	YW	Milk	TM	GL	CED	SC
110	.4	48	93	13	37	-1.0	103.6	NA

291Y- Homozygous Black, Double Polled son of Mr. Grid Topper 43T and a growthy Lutton female. 291Y is very striking from the profile. He is clean fronted and smooth shouldered and he blends that back into good body depth and rib shape. Despite being a late February calf, 291Y still weaned off at 808 pounds as well.

**Lot 90**

25% POLLED BLACK BULL

**Lot 91** **TAU MR VIRGINIAN 285Y**

★ Calved: February 23, 2011 ★ Tattoo: TAU 285Y ★ Reg. #: AMGV1196925

**Birth Weight: 80** **Adj. 205-day Wt: 754**Connealy Virginian 681  
**SDCC VIRGINIAN 318T**  
Plattemere Queen W 423TAU Krugerrand 70M  
**TAU KRUGERRAND 563R**  
TAU Miss Freedom 149L

GeneSTAR <sup>®</sup> MVP	
Feed Efficiency	-1.18
Marbling	0.20
Tenderness	0.23

CE	BW	WW	YW	Milk	TM	GL	CED	SC
NA	-.1	40	86	15	34	NA	NA	NA

285Y- Here is another brother to last year's high seller that is out of our Angus herd sire SDCC Virginian. These Virginian sons are powerful growth machines that are sure to add muscle and pounds to any herd, and I expect nothing less from 285Y.

38% POLLED HOMOZYGOUS BLACK BULL

**Lot 92** **TAU MR GRID TOPPER 43T 286Y**

★ Calved: February 23, 2011 ★ Tattoo: TAU 286Y ★ Reg. #: AMGV1196772

**Birth Weight: 80** **Adj. 205-day Wt: 681**TC Grid Topper 355  
**TAU MR GRID TOPPER 43T**  
TAU Miss Ty 3130NTAU Krugerrand 70M  
**TAU MS KRUGERRAND 70M 7165T**  
TAU Miss Big Sky 3151N

GeneSTAR <sup>®</sup> MVP	
Feed Efficiency	0.62
Marbling	0.10
Tenderness	0.19

CE	BW	WW	YW	Milk	TM	GL	CED	SC
109	.2	37	85	11	29	-1.6	102.7	0.0

286Y- Son of our up and coming herd sire Grid Topper 43T. 286Y is a stylish prospect that is long, extended, and square. He is backed by good numbers and if he is anything like his father he should make a heck of a herd sire.

38% POLLED HOMOZYGOUS BLACK BULL

**Lot 93** **TAU MR FINAL ANSWER 290Y**

★ Calved: February 23, 2011 ★ Tattoo: TAU 290Y ★ Reg. #: AMGV1185377

**Birth Weight: 84** **Adj. 205-day Wt: 725**Sitz Traveler 8180  
**SAV FINAL ANSWER 0035**  
SAV Emulous 8145GMCC Ruppel Gunnison N31  
**TAU MS GUNNISON 5100R**  
TAU Ms Pepper 835H

GeneSTAR <sup>®</sup> MVP	
Feed Efficiency	-0.69
Marbling	0.02
Tenderness	0.04

CE	BW	WW	YW	Milk	TM	GL	CED	SC
115	-1.3	43	86	19	41	-8	104.2	.3

290Y- Tanner's bull that is sired by SAV Final Answer and out of a good Gunnison female. Here is a powerful individual that is backed by a good set of EPD's. He weaned off at 725 pounds as well as being very heavy muscled. Find him sale day.

50% POLLED HOMOZYGOUS BLACK BULL

**Lot 94** **TAU MR GRID TOPPER 43T 292Y**

★ Calved: February 23, 2011 ★ Tattoo: TAU 292Y ★ Reg. #: AMGV1185379

**Birth Weight: 93** **Adj. 205-day Wt: 823**TC Grid Topper 355  
**TAU MR GRID TOPPER 43T**  
TAU Miss Ty 3130NN Bar Emulation Ext  
**TAU MS N BAR EXT 4153P**  
TAU Ms Doctor Pepper 8108H

GeneSTAR <sup>®</sup> MVP	
Feed Efficiency	0.46
Marbling	0.10
Tenderness	0.25

CE	BW	WW	YW	Milk	TM	GL	CED	SC
110	.9	52	98	11	37	-1.5	104.1	-.2

292Y- Homozygous Black, Double Polled son of our up and coming herd sire Grid Topper 43T. 292Y tipped the weaning scales at 823 lbs. If you like growth and performance in a deep bodied and heavy muscled package check out 292Y. One of our Balancer pen bulls in Denver 2012.

**Lot 94**

63% POLLED BLACK BULL

**Lot 95** **TAU MR GRID TOPPER 43T 298Y**

★ Calved: February 24, 2011 ★ Tattoo: TAU 298Y ★ Reg. #: AMGV1196758

**Birth Weight: 87** **Adj. 205-day Wt: 700**TC Grid Topper 355  
**TAU MR GRID TOPPER 43T**  
TAU Miss Ty 3130NSLC Freedom 178F ET  
**TAU FREEDOM 564R**  
TAU Ms Triple Threat 609F

GeneSTAR <sup>®</sup> MVP	
Feed Efficiency	
Marbling	
Tenderness	

CE	BW	WW	YW	Milk	TM	GL	CED	SC
108	.3	38	81	9	28	-2.2	102.3	-.1

298Y- Son of Grid Topper 43T out of a Freedom daughter. 298Y is a stylish dude that is extended about his front and long bodied while being sound structured.

38% POLLED BLACK BULL

**Lot 96** | **TAU MR IN FOCUS 303Y**

★ Calved: February 25, 2011 ★ Tattoo: TAU 303Y ★ Reg. #: AMGV1196922

**Birth Weight: 80 Adj. 205-day Wt: 707**

SAF Focus of ER  
**MYTTY IN FOCUS**  
Mytty Countess 906

OGSG Master Onix 247M  
**TAU ONIX 5105**  
TAU Miss U Sound 321C

<b>GeneSTAR MVP</b>	
Feed Efficiency	
Marbling	
Tenderness	

CE	BW	WW	YW	Milk	TM	GL	CED	SC
113	-1.3	33	76	20	36	-1.9	105.9	.2

303Y- Moderate framed but heavy muscled son of In Focus. 303 is a bull I see a lot of good in--muscle, structure and maternal.

50% POLLED BLACK BULL

**Lot 97** | **TAU MR TUNED IN 310Y**

★ Calved: February 26, 2011 ★ Tattoo: TAU 310Y ★ Reg. #: AMGV1196938

**Birth Weight: 88 Adj. 205-day Wt: 744**

TC Grid Topper 355  
**TAU TUNED IN 55T**  
TAU Miss Freedom 306N

SAV 8180 Traveler 004  
**TAU MS TRAVELER 004 643S**  
TAU Miss Freedom 210M

<b>GeneSTAR MVP</b>	
Feed Efficiency	
Marbling	
Tenderness	

CE	BW	WW	YW	Milk	TM	GL	CED	SC
108	.5	39	91	15	35	-2.1	104.3	.3

310Y- This bull sired by Tuned In 55T is stout powerful and loaded with growth. He hit the scales at 744 pounds at weaning.

50% POLLED HOMOZYGOUS BLACK BULL

**Lot 98** | **TAU MR BISMARCK 309Y**

★ Calved: February 26, 2011 ★ Tattoo: TAU 309Y ★ Reg. #: AMGV1185458

**Birth Weight: 85 Adj. 205-day Wt: 705**

G A R Grid Maker  
**S A V BISMARCK 5682**  
S A V Abigale 0451

GMCC Ruppel Gunnison N31  
**TAU MS GUNNISON 5112R**  
TAU Miss Freedom 246M

<b>GeneSTAR MVP</b>	
Feed Efficiency	-0.66
Marbling	-0.07
Tenderness	0.44

CE	BW	WW	YW	Milk	TM	GL	CED	SC
NA	-1.2	39	80	18	38	NA	NA	NA

309Y- Homozygous Black, Double Polled son of SAV Bismarck. 309Y is another late February with plenty of growth and performance. He is thick and muscular while going back to the female making Ruppel Gunnison on the maternal side. 309Y could make a lasting impact in any herd.



**Lot 98**

63% POLLED BLACK BULL

**Lot 99** | **TAU MR GRID TOPPER 43T 326Y**

★ Calved: March 3, 2011 ★ Tattoo: TAU 326Y ★ Reg. #: AMGV1185474

**Birth Weight: 85 Adj. 205-day Wt: 743**

TC Grid Topper 355  
**TAU MR GRID TOPPER 43T**  
TAU Miss Ty 3130N

PPFG PCCI Power Pac 13F  
**TAU MISS POWER PAC 13F 441P**  
TAU Miss Freedom 2118M

<b>GeneSTAR MVP</b>	
Feed Efficiency	
Marbling	
Tenderness	

CE	BW	WW	YW	Milk	TM	GL	CED	SC
110	-1	42	77	8	29	-1.5	103.1	0.0

326Y- 63% son of our herdsire Grid Topper 43T and backed by a powerful Power Pac daughter. 326Y is a later born calf that shot up and weaned at 743 pounds.

50% HOMOZYGOUS BLACK HOMOZYGOUS POLLED BULL

**Lot 100** | **TAU MR BLACK IMPACT 318Y**

★ Calved: March 1, 2011 ★ Tattoo: TAU 318Y ★ Reg. #: AMGV1196937

**Birth Weight: 84 Adj. 205-day Wt: 690**

HYEK Black Impulse 1296L  
**HYEK BLACK IMPACT 3960N**  
HYEK Black Ruby 9604J

B/R New Frontier 095  
**TAU MS NEW FRONTIER 5114**  
TGA Prompter 6807 557E

<b>GeneSTAR MVP</b>	
Feed Efficiency	-1.55
Marbling	-0.01
Tenderness	-0.07

CE	BW	WW	YW	Milk	TM	GL	CED	SC
107	-.7	38	80	18	37	-3.6	99.3	-.3

318Y- Homozygous Black, Homozygous Polled. Another bull sired by HYEK Black Impact. 318Y is out of a New Frontier 095 daughter, he is deep bodied and soft ribbed while being sound structured.

50% POLLED BLACK BULL

**Lot 101** | **TAU MR FORESIGHT 329Y**

★ Calved: March 4, 2011 ★ Tattoo: TAU 329Y ★ Reg. #: AMGV1196929

**Birth Weight: 80 Adj. 205-day Wt: 741**

Papa Forte 1921  
**WOODHILL FORESIGHT**  
Bon View Gammer 85

TAU Nite Hawk Of 614F 2K ET  
**TAU MISS NIGHT HAWK 2K 3211N**  
TAU Ms Sleepy 0116K

<b>GeneSTAR MVP</b>	
Feed Efficiency	-0.05
Marbling	-0.03
Tenderness	-0.27

CE	BW	WW	YW	Milk	TM	GL	CED	SC
106	.4	40	81	19	39	.1	100.3	.1

329Y- 50% son of A.I. sire Woodhill Foresight, that should add pounds and performance. He shows a 40 for his weaning weight EPD and an 81 for his yearling weight EPD.

50% HOMOZYGOUS BLACK HOMOZYGOUS POLLED BULL

**Lot 102** | **TAU MR TSUNAMI 349Y**

★ Calved: March 10, 2011 ★ Tattoo: TAU 349Y ★ Reg. #: AMGV1196935

**Birth Weight: 86 Adj. 205-day Wt: 743**

SSL Platinum  
**BABR TSUNAMI 447P**  
BABR 0247K

BCC Bushwacker 41-93  
**TAU MS BW 469P**  
WB Blackbird 1203

<b>GeneSTAR MVP</b>	
Feed Efficiency	
Marbling	
Tenderness	

CE	BW	WW	YW	Milk	TM	GL	CED	SC
108	.2	37	73	19	37	-1.7	102.8	0.0

349Y- Homozygous Black, Homozygous Polled. Here is a son of Tsunami and out of a good Angus female. This 50% balancer has a consistent set of EPD's and has growth in his pedigree.

**Lot 103** **TAU MR SAFARI 198X**

★ Calved: March 4, 2010 ★ Tattoo: TAU 198X ★ Reg. #: AMGV1160154

**Birth Weight: 90** **Adj. 205-day Wt: 736**PERK Perks Advance 121R  
**PIE PIE ADVANCE 6132**  
PIE PIE New Gusty Trend 3036HLH HLH Buster 406 603  
**TAU MISS BUSTER 320N**  
TAU Miss Blacksmith 1160L

GeneSTAR MVP	
Feed Efficiency	-0.80
Marbling	-0.29
Tenderness	0.10

CE	BW	WW	YW	Milk	TM	GL	CED	SC
90	.6	37	80	13	31	-1.0	89.4	NA

198X- Red double polled son of PIE Advance 6132. 198X is a 3/4 Red Angus with plenty of rib and flesh. He comes from a large framed balancer female.

*Igenity information missing on any bulls in the catalog will be posted on our website as soon as it is available.*

**Remember**

*Bulls stay Free until April 1st*

**Balancer™**

**What the Industry Wants...  
What the Industry Needs!**

There are sound reasons that a majority of pork and poultry market animals are already the product of hybrid genetics—Consistency, predictability and economic efficiency.

Balancers offer commercial cattle producers these same advantages today.

Balancer breeders understand that a single breed cannot fit all of the challenges of the beef industry. They understand that the commercial cattle business drives the success of the seedstock industry. That's why they design their breeding programs and align their partnerships with the interest of the commercial industry foremost in their minds. In this case, Balancers are backed up by the same genetic documentation and programs that commercial users enjoy through the American Gelbvieh Association.

✓ The American Gelbvieh Association was the first breed association to offer commercial users a commercial marketing program that includes everything from help in selecting genetics to help in marketing Gelbvieh-sired calves. All at no charge.

✓ The Gelbvieh Alliance—open to all cattle—was the first breed-coordinated grid-based marketing system in the industry. It is still the largest of its kind.

✓ Most recently, the American Gelbvieh Association was the first breed organization to design and promote a crossbreeding system (SmartCross) aimed at helping commercial producers to easily take advantage of heterosis.

**Lot 104** **TAU MR RED HOT 158X**

★ Calved: February 22, 2010 ★ Tattoo: TAU 158X

**Birth Weight: 85** **Adj. 205-day Wt: 570**BTK Mik Crk Cub 722  
**CFC RED CROWFOOT OLE'S OSCAR**  
Red Angus CowColey's Hi Roller 546R  
**UNIVERSAL 811U**  
067 Logan Peggy 011

GeneSTAR MVP	
Feed Efficiency	0.16
Marbling	0.19
Tenderness	0.20

103X- Red and double polled Purebred Red Angus out of the calving ease sire Ole's Oscar. Mom and Dad purchased this bull's dam from Kelly Overmiller in Kansas three years ago and the purchase paid off with the production of a very complete Red Angus bull.

**Gelbvieh Adds Value  
When Feeding Cattle**

Feeder calves with Continental breed influence and the potential to hit the mark on Quality and Yield Grades are in demand at feeder calf markets across the country. The added pounds of carcass produced are adding dollars to the cattle feeder's pockets.

"A bull that sires 20 head of the heavier-finishing steers each year has created \$1,148 in additional progeny value versus another bull that sires the lighter-finishing steers," says Tom Brink, JBS/Five Rivers Cattle Feeding, the largest fed cattle marketer in the world. The feeder wants the added carcass weight that Gelbvieh and Balancer genetics bring to the equation.

In good or tough economic times a Choice Yield Grade 2 carcass is an industry target. An 800-pound Yield Grade 2 carcass that has a USDA Choice grade in today's market is worth \$72 more than a 750-pound carcass with the same grade profile.

The American Gelbvieh Association uses a carcass value EPD to calculate carcass parameters on a level that reflects true dollar value of carcasses as cattle are priced in real world grid marketing. The CV EPD is an index of a four single trait carcass EPDs: carcass weight, marbling, days to finish and ribeye area.

What sets Gelbvieh apart from other breeds is the inclusion of the carcass weight trait when calculating the CV EPD. Weight drives value. Gelbvieh cattle selected for carcass value will increase grid premium potential in terms of carcass weight, Quality Grade, Yield Grade, and will reduce discounts for "out" carcasses.

Data from Colorado State University's Maxwell Ranch SmartCross research showed Gelbvieh-influenced cattle resulted in significantly more dollars in both a low and high Choice/Select spread market over Angus-sired cattle. When based on Quality and Yield premiums/discounts and carcass weight in both scenarios, Gelbvieh-sired cattle added \$53.17 per head in a low spread and \$36.67 per head in a high spread.

Regardless of the cow herd base you are starting with, there is an easy way to use Gelbvieh or Balancer bulls to get to the most profitable place in the industry today. Feeders and packers demand an animal that will grade Choice with a Yield Grade 1 or 2. Crossbred cows have added longevity and a Gelbvieh-influenced female gives you more cow power in your pasture.

Visit the American Gelbvieh Association website at [www.gelbvieh.org](http://www.gelbvieh.org) to get more information about the Gelbvieh SmartCross system and how it can work for you or call the AGA office at 303-465-2333. Add pounds and profit to your operation with Gelbvieh and Balancer genetics and marketing opportunities.

63% POLLED BLACK HEIFER

**Lot 105** **TAU MS TUNED IN 001X**

★ Calved: January 16, 2010 ★ Tattoo: TAU 001X ★ Reg. #: AMGV1166909

**Birth Weight: 68 Adj. 205-day Wt: 606**

TC Grid Topper 355  
**TAU TUNED IN 55T**  
 TAU Ms Freedom 306N  
  
 SLC Freedom 178F ET  
**TAU MS FREEDOM 807U**  
 TAU Miss Freedom 1197L

CE	BW	WW	YW	Milk	TM	GL	CED
110	-0.6	35	84	13	31	-2.9	104

AI'd 4-22 to *Rupple Gunnison*,  
 pasture exposed to 60W —5-20 to 7-10

75% POLLED BLACK HEIFER

**Lot 106** **TAU MS FREEDOM 002X**

★ Calved: January 18, 2010 ★ Tattoo: TAU 002X ★ Reg. #: AMGV1166910

**Birth Weight: 46 Adj. 205-day Wt: 620**

VAA Leachman New Day 205B  
**SLC FREEDOM 178F ET**  
 BB Miss 61Y  
  
 Black Impact 3960N  
**TAU MS BLACK IMPACT 8123U**  
 TAU Ms Krugerrand 951

CE	BW	WW	YW	Milk	TM	GL	CED

AI'd 5-17 to *In Focus*,  
 pasture exposed to 60W —5-20 to 7-10

63% POLLED BLACK HEIFER

**Lot 107** **TAU MS GRID TOPPER 005X**

★ Calved: January 20, 2010 ★ Tattoo: TAU 005X ★ Reg. #: AMGV1166913

**Birth Weight: 86 Adj. 205-day Wt: 603**

TC Grid Topper 355  
**TAU MR GRID TOPPER 43T**  
 TAU Miss Ty 3130N  
  
 Tsunami 447P  
**TAU MS TSUNAMI 722T**  
 TAU Ms Megan 427D

CE	BW	WW	YW	Milk	TM	GL	CED
108	1.0	40	76	12	32	-1.3	102

AI'd 4-23 to *Final Answer*,  
 pasture exposed to 60W —5-20 to 7-10

63% POLLED BLACK HEIFER

**Lot 108** **TAU MS GRID TOPPER 43T 008X**

★ Calved: January 23, 2010 ★ Tattoo: TAU 008X ★ Reg. #: AMGV1166984

**Birth Weight: 87 Adj. 205-day Wt: 590**

TC Grid Topper 355  
**TAU MR GRID TOPPER 43T**  
 TAU Miss Ty 3130N  
  
 Mr Sleepy 204P  
**TAU MS SLEEPY 204P 7129T**  
 TAU Ms Blacksmith 8105H

CE	BW	WW	YW	Milk	TM	GL	CED
108	0.8	42	78	11	32	-1.7	103

AI'd 4-28 to *Rupple Gunnison*,  
 pasture exposed to 60W —5-20 to 7-10

75% POLLED RED HEIFER

**Lot 109** **TAU MS FREEDOM 013X**

★ Calved: January 24, 2010 ★ Tattoo: TAU 013X ★ Reg. #: AMGV1166941

**Birth Weight: 80 Adj. 205-day Wt: 603**

VAA Leachman New Day 205B  
**SLC FREEDOM 178F ET**  
 BB Miss 61Y  
  
 Night Moves 593R ET  
**TAU MS NIGHT MOVES 8160U**  
 TAU Cherokee 555R

CE	BW	WW	YW	Milk	TM	GL	CED
105	1.5	49	92	8	33	-3.1	102

Pasture Exposed 60W— 5-20 to 7-10

50% POLLED RED HEIFER

**Lot 110** **TAU MISS TWILIGHT 022X**

★ Calved: January 26, 2010 ★ Tattoo: TAU 022X ★ Reg. #: AMGV1145446

**Birth Weight: 83 Adj. 205-day Wt: 536**

TC Grid Topper 355  
**TAU MR GRID TOPPER 43T**  
 TAU Miss Ty 3130N  
  
 TAU Gunnison 106R  
**TAU MS GUNNISON 106R 7163T**  
 TAU Miss Traveler 6807 407P

CE	BW	WW	YW	Milk	TM	GL	CED

AI'd 5-17 to *SLC Freedom*,  
 pasture exposed to 60W —5-20 to 7-10

38% POLLED BLACK HEIFER

**Lot 111** **TAU MS 43T 037X**

★ Calved: January 29, 2010 ★ Tattoo: TAU 037X ★ Reg. #: AMGV1166930

**Birth Weight: 80 Adj. 205-day Wt: 613**

TC Grid Topper 355  
**TAU MR GRID TOPPER 43T**  
 TAU Miss Ty 3130N  
  
 SS Traveler T510 2T22  
**TAU MISS T510 2T22 730T**  
 TAU Ms Freedom 9142J

CE	BW	WW	YW	Milk	TM	GL	CED
108	1.1	48	95	11	35	-1.6	103

AI'd 5-18 to *Rupple Gunnison*,  
 pasture exposed to 60W —5-20 to 7-10

75% POLLED BLACK HEIFER

**Lot 112** **TAU MS GUNNISON 049X**

★ Calved: January 31, 2010 ★ Tattoo: TAU 049X ★ Reg. #: AMGV1166935

**Birth Weight: 80 Adj. 205-day Wt: 689**

VRT Rup Lazy TV Hotfudge J357  
**GMCC RUPPLE GUNNISON N31**  
 RUP Rupple 919L  
  
 Beckton Lancer F442T  
**TAU MS LANCER 8108U**  
 Ms Doctor Pepper 8108H

CE	BW	WW	YW	Milk	TM	GL	CED
107	0.9	40	72	15	35	-0.1	100

Pasture Exposed 60W— 5-20 to 7-10

All bred heifers are pasture exposed to TAU Hy-Per Active 60W ET 5-20 to 7-10, Registration #1125884

38% POLLED BLACK HEIFER

**Lot 113** **TAU MS WINDY 061X**

★ Calved: February 2, 2010 ★ Tattoo: TAU 061X ★ Reg. #: AMGV1166894

**Birth Weight: 85**      **Adj. 205-day Wt: 580**

AAR Really Windy 1205

**HARB WINDY 702JH**

HARB Black Lady 073JH

SLC Freedom 178F ET

**TAU MS FREEDOM 248M**

TAU Kaiser 722C

CE	BW	WW	YW	Milk	TM	GL	CED
NA	-0.7	34	79	16	33	NA	NA

*AI'd 5-16 to SLC Freedom 178F ET,  
pasture exposed to 60W —5-20 to 7-10*

50% POLLED BLACK HEIFER

**Lot 114** **TAU FINAL ANSWER 072X**

★ Calved: February 3, 2010 ★ Tattoo: TAU 072X ★ Commercial

**Birth Weight: 81**      **Adj. 205-day Wt: NA**

SITZ Traveler 8180

**S A V FINAL ANSWER 0035**

S A V Emulous 8145

PIE Advance 6132

**TAU 897U**

TAU 3198N

*AI'd 5-20 to SLC Freedom 178F ET,  
pasture exposed to 60W —5-20 to 7-10*

50% POLLED BLACK HEIFER

**Lot 115** **TAU MISS GRIDIRON 077X**

★ Calved: February 5, 2010 ★ Tattoo: TAU 077X ★ Reg. #: AMGV1166946

**Birth Weight: 84**      **Adj. 205-day Wt: 593**

AMAN Grid Maker

**AMAN GRIDIRON 258**

AMAN TC Blackbird 7049

Rupple Gunnison N31

**MS GUNNISON 5112R**

TAU Miss Freedom 246M

CE	BW	WW	YW	Milk	TM	GL	CED
108	0.0	41	85	16	37	-0.6	102

*Pasture Exposed 60W— 5-20 to 7-10*

50% POLLED BLACK HEIFER

**Lot 116** **TAU MS KRUGERRAND 130P 0102X**

★ Calved: February 8, 2010 ★ Tattoo: TAU 0102X ★ Reg. #: AMGV1166841

**Birth Weight: 68**      **Adj. 205-day Wt: 681**

TAU Krugerrand 70M

**TAU MR KRUGERRAND 70M 130P**

TAU Ms Coco 052KA 437D

Night Moves 593R ET

**TAU MS NIGHT MOVES 834U**

TAU Alliance 590R

CE	BW	WW	YW	Milk	TM	GL	CED
110	-0.4	48	92	13	37	-1.3	102

*AI'd 5-20 to SLC Freedom 178F ET,  
pasture exposed to 60W —5-20 to 7-10*

75% POLLED BLACK HEIFER

**Lot 117** **TAU MS SLEEPY 193R 0116X**

★ Calved: February 11, 2010 ★ Tattoo: TAU 0116X ★ Reg. #: AMGV1166847

**Birth Weight: 90**      **Adj. 205-day Wt: 659**

Sleepy 161F ET

**TAU SLEEPY 193R**

TAU Ms Krugerrand 940

Bennett Ideal 6182

**TAU MS BENNETT IDEAL 4114P**

TAU Ms PTEZ 937 846J Of 504E

CE	BW	WW	YW	Milk	TM	GL	CED

*AI'd 5-16 to SLC Freedom 178F ET,  
pasture exposed to 60W —5-20 to 7-10*

HB13% POLLED BLACK HEIFER

**Lot 118** **TAU MS GRID TOPPER 0125X**

★ Calved: February 12, 2010 ★ Tattoo: TAU 0125X ★ Reg. #: AMGV1166977

**Birth Weight: 80**      **Adj. 205-day Wt: 617**

TC Grid Topper 355

**TAU MR GRID TOPPER 43T**

TAU Miss Ty 3130N

Bon View New Design 878

**TAU MS NEW DESIGN 878 254**

TAU Ms Triple Threat 636F

CE	BW	WW	YW	Milk	TM	GL	CED
108	-0.3	40	86	11	31	-1.4	102

*AI'd 5-16 to Final Answer,  
pasture exposed to 60W —5-20 to 7-10*

50% POLLED BLACK HEIFER

**Lot 119** **TAU MS SOLUTION 0141X**

★ Calved: February 16, 2010 ★ Tattoo: TAU 0141X ★ Reg. #: AMGV1166966

**Birth Weight: 84**      **Adj. 205-day Wt: 651**

Extra 2106K ET

**SOLUTION**

P401

BCCC Bushwacker 4-93

**TAU MS BW 469P**

WB Blackbird 1203

CE	BW	WW	YW	Milk	TM	GL	CED
108	0.0	39	76	9	29	-2.7	106

*AI'd 4-24 to Rupple Gunnison,  
pasture exposed to 60W —5-20 to 7-10*

50% POLLED RED HEIFER

**Lot 120** **TAU MS OSCAR 0150X**

★ Calved: February 18, 2010 ★ Tattoo: TAU 0150X ★ Reg. #: AMGV1166905

**Birth Weight: 78**      **Adj. 205-day Wt: 572**

MLK CRK Cub 722

**AMAR REDCROWFOOT OLE'S OSCAR**

AMAR

SLC Freedom 178F ET

**TAU MISS FREEDOM 157L**

TAU Ms 1A of 357C 781G

CE	BW	WW	YW	Milk	TM	GL	CED
NA	-1.4	30	71	14	29	NA	NA

*AI'd 5-18 to Final Answer,  
pasture exposed to 60W —5-20 to 7-10***All bred heifers are pasture exposed to TAU Hy-Per Active 60W ET 5-20 to 7-10, Registration #1125884**

BRED HEIFERS

38% POLLED RED HEIFER

**Lot 121** | **TAU MS ADVANCE 0156X**

★ Calved: February 19, 2010 ★ Tattoo: TAU 0156X ★ Reg. #: AMGV1166862

**Birth Weight: 82**      **Adj. 205-day Wt: 609**

Perks Advance 121R  
**PIE ADVANCE 6132**  
 PIE New Gusty Trend 3036

SLC Freedom 178F ET  
**TAU MS FREEDOM 635S**  
 TAU Ms Big Sky 4204P

CE	BW	WW	YW	Milk	TM	GL	CED
107	0.5	35	76	10	28	-1.9	101

AI'd 5-20 to SLC Freedom 178F ET,  
 pasture exposed to 60W —5-20 to 7-10

38% POLLED BLACK HEIFER

**Lot 122** | **TAU MS MARATHON 0160X**

★ Calved: February 21, 2010 ★ Tattoo: TAU 0160X ★ Reg. #: AMGV1166867

**Birth Weight: 85**      **Adj. 205-day Wt: 557**

OCC Kirby 633K  
**BC MARATHON 7022**  
 Gibbet Hill Mignonne E37

Sleepy 1617 ET  
**TAU MISS SLEEPY 1200L**  
 C1109

CE	BW	WW	YW	Milk	TM	GL	CED
107	1.2	39	76	13	33	-1.0	101

AI'd 5-13 to Final Answer,  
 pasture exposed to 60W —5-20 to 7-10

38% POLLED BLACK HEIFER

**Lot 123** | **TAU MS GRID TOPPER 0174X**

★ Calved: February 24, 2010 ★ Tattoo: TAU 0174X ★ Reg. #: AMGV1166871

**Birth Weight: 88**      **Adj. 205-day Wt: 511**

GAR Grid Maker  
**TC GRID TOPPER**  
 TC Pride 8067

Mr Sleepy 161F ET  
**TAU MS SLEEPER 080K**  
 TAU Ms Conveyor 7106

CE	BW	WW	YW	Milk	TM	GL	CED
107	1.0	40	85	14	34	-0.9	104

AI'd 5-18 to Final Answer,  
 pasture exposed to 60W —5-20 to 7-10

75% POLLED BLACK HEIFER

**Lot 124** | **TAU MS IMPACT 0176X**

★ Calved: February 25, 2010 ★ Tattoo: TAU 0176X ★ Reg. #: AMGV1166873

**Birth Weight: 88**      **Adj. 205-day Wt: 617**

HYEK Black Impulse 1296L  
**HYEK BLACK IMPACT 3960N**  
 HYEK Black Ruby 9604J

Big Sky 2066K ET  
**TAU MS BIG SKY 466P**  
 TAU TGMS C365 0106K Of 6267

CE	BW	WW	YW	Milk	TM	GL	CED
106	0.3	39	75	11	31	-3.7	99

AI'd 5-16 to Final Answer,  
 pasture exposed to 60W —5-20 to 7-10

50% POLLED BLACK HEIFER

**Lot 125** | **TAU MS TUNED IN 0190X**

★ Calved: March 2, 2010 ★ Tattoo: TAU 0190X ★ Reg. #: AMGV1166879

**Birth Weight: 89**      **Adj. 205-day Wt: 599**

TC Grid Topper 355  
**TAU TUNED IN 55T**  
 TAU Ms Freedom 306N

Connealy Freightliner  
**TAU MS FREIGHTLINER 498P**  
 TAU Ms Zorro 6137

CE	BW	WW	YW	Milk	TM	GL	CED

AI'd 5-12 to Ruppel Gunnison,  
 pasture exposed to 60W —5-20 to 7-10

50% POLLED RED HEIFER

**Lot 126** | **TAU MS ADVANCE 0221X**

★ Calved: March 16, 2010 ★ Tattoo: TAU 0221X ★ Reg. #: AMGV1166886

**Birth Weight: 72**      **Adj. 205-day Wt: 596**

Perks Advance 121R  
**PIE ADVANCE 6132**  
 PIE New Gusty Trend 3036

SLC Freedom 178F ET  
**TAU MISS FREEDOM 269M**  
 TAU Ms Twin Pepper 618F

CE	BW	WW	YW	Milk	TM	GL	CED
108	-1.1	31	70	10	26	-1.4	101

AI'd 5-17 to SLC Freedom 178F ET,  
 pasture exposed to 60W —5-20 to 7-10

38% POLLED BLACK HEIFER

**Lot 127** | **TAU TC GRIDIRON 782 0239X**

★ Calved: March 26, 2010 ★ Tattoo: TAU 0239X ★ Reg. #: AMGV1166906

**Birth Weight: 88**      **Adj. 205-day Wt: 712**

TC Gridiron 258  
**TC GRIDIRON 782**  
 TC Quality 3161

Big N'Rich 911P ET  
**TAU MS BIG N'RICH 7194T ET**  
 TAU Ms Dr P Of 516E 716G

CE	BW	WW	YW	Milk	TM	GL	CED
NA	1.7	44	92	16	38	NA	NA

AI'd 5-12 to Final Answer,  
 pasture exposed to 60W —5-20 to 7-10



**TAU Ms Grid Topper 43T 015X**  
 Reserve Champion Balancer Female at the Junior National Show

All bred heifers are pasture exposed to TAU Hy-Per Active 60W ET 5-20 to 7-10, Registration #1125884

50% POLLED BLACK HEIFER

**Lot 128** *TAU MS WINDY 097X*

★ Calved: February 7, 2010 ★ Tattoo: TAU 097X ★ Reg. #: AMGV1166896

**Birth Weight: 83 Adj. 205-day Wt: 535**

AAR Really Windy 1205  
**HARB WINDY 702JH**  
 HARB Black Lady 073JH

Power Pac 9070J  
**TAU MISS POWER PAC 9070 445P**  
 TAU Miss Blacksmith 1164L

CE	BW	WW	YW	Milk	TM	GL	CED
NA	-0.1	36	78	20	38	NA	NA

*AI'd 4-23 to SLC Freedom 178F ET,  
 pasture exposed to 60W —5-20 to 7-10*

75% POLLED BLACK HEIFER

**Lot 129** *TAU MS GUNNISON 007X*

★ Calved: January 21, 2010 ★ Tattoo: TAU 007X ★ Commercial

**Birth Weight: 70 Adj. 205-day Wt: 605**

VRT Rup Lazy TV Hotfudge J357  
**GMCC RUPPLE GUNNISON N31**  
 RUP Ruppel 919L

TC Freedom 104  
**TAU TC FREEDOM 848U**  
 TAU Miss Freedom 0158K

CE	BW	WW	YW	Milk	TM	GL	CED
108	-0.6	37	82	19	38	-2.4	105

*AI'd 5-17 to Final Answer,  
 pasture exposed to 60W —5-20 to 7-10*



50% POLLED BLACK HEIFER

**Lot 130** *TAU MS KRUGERRAND 70M 130P 082X*

★ Calved: February 6, 2010 ★ Tattoo: TAU 082X ★ Commercial

**Birth Weight: 90 Adj. 205-day Wt: 596**

TAU Krugerrand 70M  
**TAU MR KRUGERRAND 70M 130P**  
 TAU Ms Coco 052KA 437D

Bon View New Design 878  
**TAU MISS NEW DESIGN 878 251M**  
 Ms Toby 8111F

CE	BW	WW	YW	Milk	TM	GL	CED
104	0.4	33	70	18	35	-0.6	100

*AI'd 5-19 to SLC Freedom 178F ET,  
 pasture exposed to 60W —5-20 to 7-10*

50% POLLED BLACK HEIFER

**Lot 131** *TAU MS GRIDIRON 0193X*

★ Calved: March 3, 2010 ★ Tattoo: TAU 0193X ★ Commercial

**Birth Weight: 87 Adj. 205-day Wt: 601**

GAR Grid Maker  
**TC GRIDIRON 258**  
 TC Black Bird 7049

Wilson's 20S ET  
**TAU 954Y**  
 TAU Miss Jay's Jenifer

CE	BW	WW	YW	Milk	TM	GL	CED
105	1.6	44	85	16	28	-0.1	102

*AI'd 5-19 to Final Answer,  
 pasture exposed to 60W —5-20 to 7-10*

38% POLLED BLACK HEIFER

**Lot 132** *TAU MISS NAGURSKI 0252X*

★ Calved: April 5, 2010 ★ Tattoo: TAU 0252X ★ Commercial

**Birth Weight: 83 Adj. 205-day Wt: 646**

Nagurski 142J  
**MR NAGURSKI 96U**  
 BAG Miss 45H 110L

New Design 1407  
**TAU MS 1407 546R**  
 TAU Miss Krugerrand 332N

CE	BW	WW	YW	Milk	TM	GL	CED
102	2.7	40	78	10	25	-.01	101

*Pasture Exposed 60W— 5-20 to 7-10*



BRED HEIFERS

All bred heifers are pasture exposed to TAU Hy-Per Active 60W ET 5-20 to 7-10, Registration #1125884

# BALANCER HEIFERS

LOT	TATOO	REG. #	SIRE	DAM	DAM COLOR	BD	BW	WW	EPD			
									BW	WW	MILK	
133	116Y	1183876	CK Wild Bill 424	Ms Advance 8195U	Red	1-25-11	55	550	0.5	38	79	13
134	155Y	1184109	Top Grid 254T 725	Ms 6807 516R	Black	2-3-11	85	604	-0.5	27	65	14
135	162Y	1184121	HYEK Black Impact 3960N	Miss Design 878 251M	Black	2-5-11	90	640	0.4	39	77	18
136	163Y	1184123	Top Grid 254T 725	Ms Structure 609S	Black	2-5-11	85	598	-0.5	26	58	15
137	168Y	1184187	CK Wild Bill 42U	Ms Sleepy 193R 8276U	Black	2-5-11	80	566	1.1	38	78	14
138	169Y	1184192	SAV Final Answer 0035	Miss Ty 4157P	Black	2-6-11	87	527	-1.0	37	78	13
139	184Y	1184220	TC Aberdeen 759	Miss Blacksmith 1164L	Black	2-9-11	85	684	1.0	49	93	23
140	392Y	1187048	SDCC Virginian 318T	Ms Tsunami 6140S	Black	3-24-11	85	597	0.4	42	84	15
141	1007Y	1184275	Tuned In 55T	Ms New Design 1407 604S	Black	2-12-11	87	627	-0.3	35	85	18
142	1010Y	1184281	TC Gridiron 782	Miss Grid Topper 864U	Black	2-13-11	88	578	0.3	37	85	14
143	1024Y	1184298	SAV Final Answer 0035	Miss Ty 489P	Red	2-15-11	65	521	-2.9	31	69	16
144	1029Y	1185185	Mr Grid Topper 43T	Miss Citation 3140N	Red	2-15-11	50	655	1.1	45	88	12
145	1048Y	1185209	Mr Grid Topper 43T	Ms Gunnison 637S	Black	2-19-11	78	651	0.9	48	88	11
146	1054Y	1185341	SAV Final Answer 0035	Miss Freedom 728T	Black	2-20-11	83	601	-2.0	38	83	16
147	1055Y	1185343	Mr Gunnison 106R 230U	Boyd On Target 823U	Red	2-21-11	80	585	0.9	41	79	15
148	1066Y	1185364	Woodhill Foresight	Miss Freedom 3187N	Black	2-22-11	85	664	0.1	44	90	17
149	1071Y	1185371	SDCC Virginian 318T	Ms 6807 5101R	Black	2-23-11	82	611	-1.0	38	86	11
150	1080Y	1185387	SDCC Virginian 318T	Miss Gunnison 106R 753T	Black	2-24-11	90	689	1.0	44	86	14
151	1091Y	1185456	MYTTY In Focus	Ms Gunnison 950W	Black	2-26-11	83	636	-0.8	43	89	21
152	1094Y	1185460	TC Aberdeen 759	Ms Blacksmith 964J	Black	2-28-11	85	673	0.4	41	78	24
153	1117Y	1185505	Mr Hy-Per Active 60W ET	Miss Gridiron 973W	Black	3-8-11	78	641	1.3	44	82	16
154	1132Y	1185611	TC Gridiron 782	Ms Tsunami 8259U	Black	3-11-11	80	662	1.3	45	88	18
155	1142Y	1185627	Mr Gunnison 10R 230U	Ms TC Freedom 812U	Black	3-15-11	80	575	1.1	38	74	14
156	1165Y	1187089	TC Gridiron 782	Ms Freedom 140S 8235U	Red	3-28-11	80	663	0.6	36	77	16
157	1178Y	1187225	TC Gridiron 782	Miss 2937 383N	Black	4-17-11	75	568	0.1	35	76	17
158	192Y	Commercial	MYTTY In Focus	4194	Black	2-10-11	75	710	-6	42	90	15
159	1008Y	Commercial	TC Aberdeen 759	557	Black	2-12-11	80	642	.1	40	86	17
160	1019Y	Commercial	SAV Final Answer 0035	7216	Black	2-14-11	75	605	-.3	36	87	18
161	1085Y	Commercial	TC Aberdeen 759	456	Black	2-25-11	85	631	-.4	38	84	17
162	1124Y	Commercial	Mr Gunnison 106R	7184	Black	3-9-11	83	558	.2	33	75	18
163	1137Y	Commercial	TC Gridiron 782	8192	Black	3-13-11	90	555	-.6	40	82	16

# Have a Great BEEF Experience with Traeger.



*Sale Day Special*



*Taste -Food tastes better when cooked with pure wood pellets!*

*Smoke -Flip a switch and now you own the best smoker!*



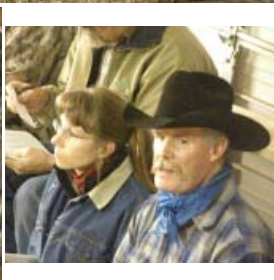
*Cooks Better -No need to babysit this grill- fully automatic. Fewer flare-ups!*



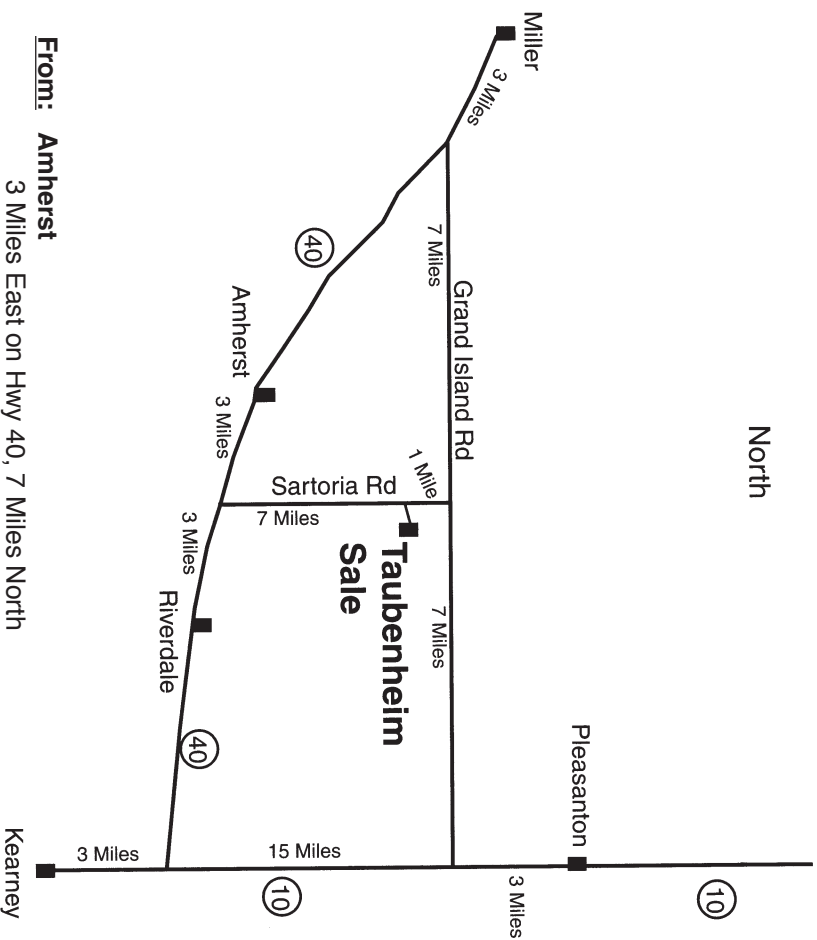
*Safe -Far safer than gas or charcoal! No gas explosions, no hot coals. Safe, "politically correct" all natural, hardwood barbecue pellets!*

*Environmentally Friendly -Wood pellets are a clean-burning, 100% natural, renewable resource.*

*Purchase from the Taubenheims*



## Sale Facility At The Ranch



- From: Amherst**  
3 Miles East on Hwy 40, 7 Miles North
- Miller**  
3 Miles Southeast on Hwy 40  
7 Miles East to Sartoria Rd
- Pleasanton**  
3 Miles South to Grand Island Rd  
7 Miles West to Sartoria Rd

Taubenheim Gelbvieh  
23685 Sartoria Road  
Amherst, NE 68812

**TO:**

*Please bring this Catalog with you to the Sale!*